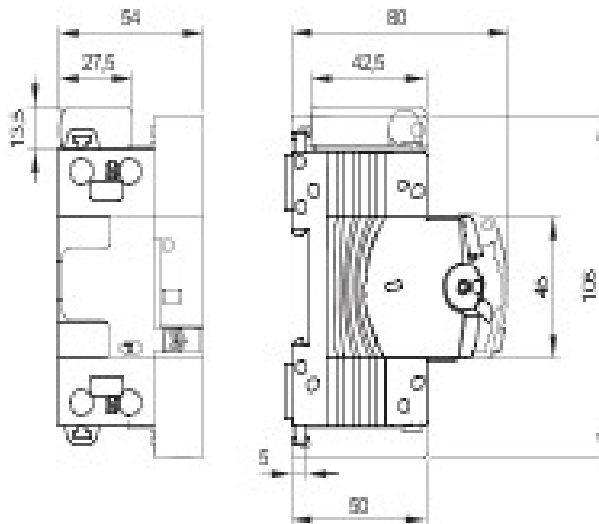




Descrição Automatic reclosing device
 Código ReStart Rm PRO 2P
 Coupled with GW94229
 Tensão nominal AC 230 V
 Corrente nominal 25 A
 Corrente nominal 25 A
 N. módulos 3
 Norma de referência EN 50557

Frequência nominal (Hz)	50 - 60 Hz	Distribution system	TT - TN-S
Rated non-operating resistance between live parts and earth (Rdo)	8kΩ	Tensão de isolamento	500 V
Rated operating resistance between live parts and earth (Rd)	16 kΩ	Tensão nominal de tensão suportada	4 kV
Maximum operating frequency	30 oper./h	Categoria de sobretensões	III
Número de manobras mecânicas	4000	Dielectric strength test voltage between pole and earth	2500 Vac for 1 minute
Type of residual current protection	A	Corrente diferencial nominal	30 mA
Temperatura de instalação	-5 +60 °C	Temperatura de armazenagem	-40 +70 °C
Automatic reclosure for untimely tripping	Si	Earth failure test	Si
Continuous system monitoring	Si	Com acessórios de	One device among: GWD0953 Wi-Fi Module - GWD0951 Auxiliary contact - GW90992 RS485 BUS Module
Número de pólos	2P	Curva	C
Tipo de interruptor disjuntor dif.	A	Poder de interrupção (EN 61009-1)	4500 A
Código Electrocod	1414	Compatibility with WiFi interface	Si

DIMENSIONAL



STANDARDS/APPROVALS



GEWISS S.p.A. Via A. Volta, 1
 24069 Cenate Sotto - Bergamo - Italy
 tel. +39 035 94 61 11 fax +39 035 94 69 09

www.gewiss.com
sat@gewiss.com
 Last update 17/05/2021

Data, measures, designs and pictures are shown only as informative purposes, and could be changed without previous notice