



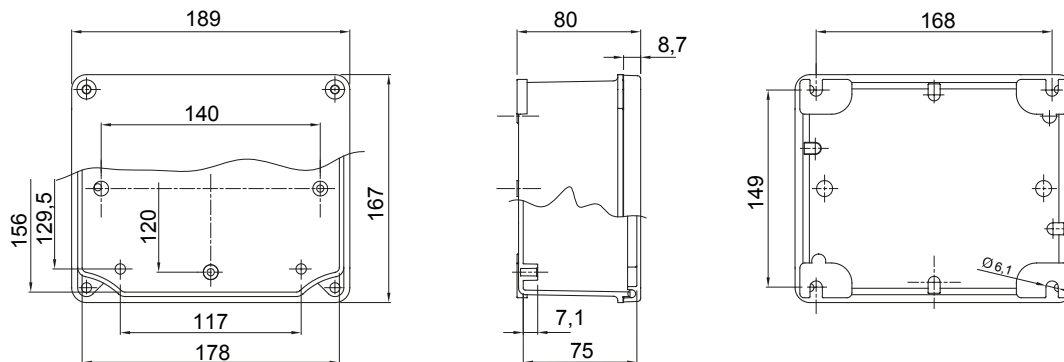
The range consists of seven different sizes of connection and junction boxes made of die-cast aluminium alloy. Suitable for every application, they are particularly recommended in industrial environments and on machinery (for particular applications is necessary contact GEWISS Service Technical Assistance). The boxes can be surface-mounted from both the inside and outside. The earth terminal (for protection against indirect contact) is on both the bottom and the lid. The outside of the box is covered with epoxy-polyester paint to ensure the maximum resistance with perfect design integration. There are also unpainted versions and ATEX versions for Zone 2 (G) and Zone 22 (D). The stainless steel fixing screws of the cover are unlosable, the bottom of the box has an insert for the earth connection and is prepared for the assembly of the DIN rail. Accessories include back-mounting plates in galvanised steel (available from the second dimension).

Material	Painted aluminium alloy	Colour	Metallic grey
IP degree	IP66	Internal dim. LxHxD (mm)	178x156x75
Mechanical resistance	IK08	Outer dim. LxHxD (mm)	189x167x80
Max Ø holes possible	37 mm	Lid screws (no. and type)	4 - Stainless steel with double slotted head
Lid	Plain screwed	Operating temperature	-60 +100 °C
Walls	Smooth	Electrocod	0230

#### BEHAVIOUR WITH CHEMICAL AND CORROSIVE AGENTS

Water	Sea air	Acids	Bases	Ketones	Alcohols	Silicon Oil	Oils/Grease	Petrol
Limited resistance	Limited resistance	Limited resistance	Limited resistance	Resistant	Resistant	Resistant	Resistant	Resistant

#### DIMENSIONAL



#### TECHNICAL SYMBOLOGY

**IP**

IP66

**IK**

IK08

#### STANDARDS/APPROVALS

