



Range of Watertight surface-mounting boards made in polyester material reinforced with fibreglass. In compliance with IEC 61439-1 (CEI 17/113), IEC 61439-2 (CEI 17/114), IEC 60670-1 (CEI 23/48), IEC 60670-24 (CEI 23/49) e IEC 62208 (CEI 17-87). Available in 7 sizes, transparent and black door versions with IP66 protection degree. Fast&Easy accessories, made in metal, allow the installation of modular devices and moulded-case circuit breakers up to 250A into the boards, reducing assembly times by up to 40%. Indicated for automation and distribution for indoor and outdoor applications.

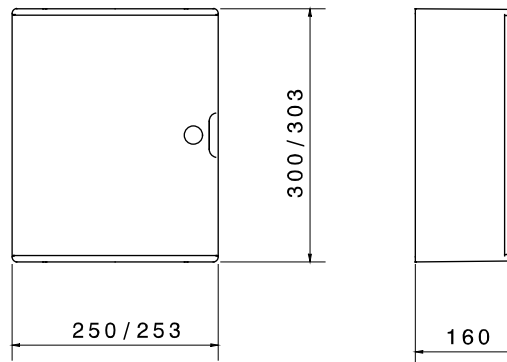
#### GENERAL INFORMATION

Standard	EN 61439-1, EN 61439-2, EN62208, EN 60670-1, IEC 60670-24	<b>MECHANICAL AND FUNCTIONAL CHARACTERISTICS</b>	-
Family	46 QP	Operating temperature	-25 +60 °C
Type of door	Blank door	IP degree	IP66
Nominal dim. LxHxD (mm)	250x300x160	Mechanical resistance	IK10
Functional dim. LxHxD (mm)	253x303x160	Glow Wire Test	960 °C
Material	Polyester reinforced with fibreglass	Thermo-pressure with ball	200 °C
Type of material	Halogen-free in compliance with EN 60754-2	UV resistance	Yes, according to EN 62208
Colour	Grey RAL 7035	<b>ELECTRICAL CHARACTERISTICS</b>	-
Maximum rated insulation voltage (Ui)	690 V	Insulation class	II
Insulation voltage	1000 V AC - 1500 V DC (according to EN 62208)	No. locks	1
Dispersible power A (W)	34	<b>ACCESSORIES</b>	-
Dispersible power B (W)	-	Surface-mounting brackets	GW46446-GW46451
		Kit for double insulation restore	GW46526

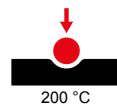
#### BEHAVIOUR WITH CHEMICAL AND ATMOSPHERIC AGENTS

Saline solution	Acids		Bases		Solvents				Mineral oil	UV rays
	Concentrated	Diluted	Concentrated	Diluted	Hexane	Benzol	Acetone	Ethyl alcohol		
Resistant	Limited resistance	Limited resistance	Limited resistance	Limited resistance	Limited resistance	Limited resistance	Not resistant	Limited resistance	Resistant	Resistant

#### DIMENSIONAL



#### TECHNICAL SYMBOLOGY



#### STANDARDS/APPROVALS

