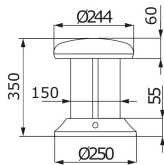


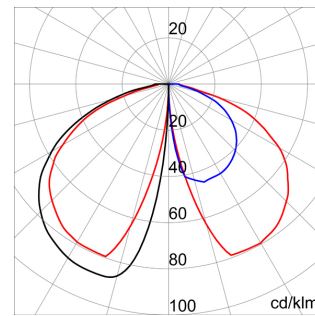
Lighting fixture for paths/garden in die-cast aluminum powder poliester painted after trivalent passivation. Plastic shield. Anti ageing silicone gasket. LED main lighting source energized with regular electricity supply, secondary LED with lens for spot effect.

Insulation class	I	Colour	Aluminium
IP degree	IP65	Lamp	LED
Mechanical resistance	IK10	Voltage	220/230 V - 50/60 Hz
No. of lamps	6+3	Light signalling lamp	Blue
Main lamp	White Led - 6300 K	Weight (kg)	4
Application	External	Height H (mm)	350
System power	27 W	Warranty	Can be extended
Operating temperature	-25 +25 °C	Driver type	Constant Current Driver Led
Efficiency class of integrated LEDs	A ÷ A++	Type of light source	LED - Not replaceable
Electrocod	244C	Light pollution	0 cd/Klm

DIMENSIONAL



PHOTOMETRIC DISTRIBUTION



TECHNICAL SYMBOLOGY



IP
IP65



IK
IK10



EXTENDED
WARRANTY



CONSTANT
CURRENT
DRIVER



STANDARDS/APPROVALS

