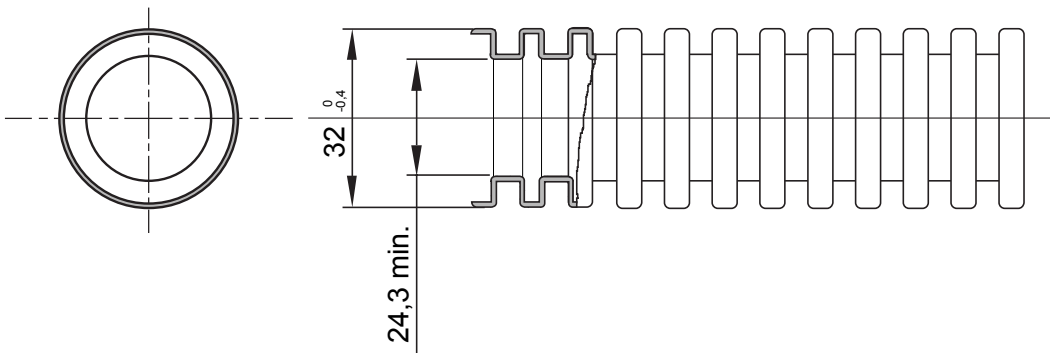




FK-Xtreme is a series of folding tubes available in 4 diameters (from 20 mm to 40 mm) and 6 colours, to identify the different lines of the electrical system. FK-Xtreme tubes are made via a co-extrusion process, which prevents the infiltration of liquid cement used for the creation of self-levelling substrates and allows the mechanical properties of the tubes to remain intact, even in extreme conditions. The range is designed to facilitate optimal setting and wiring operations.

|   |   |  |  |
|---|---|--|--|
| Colour  | Natural white                             | Material   | Coextruded PVC                                 |
| Type  | without cable puller                      | Conduits Ø (mm)  | 32   |
| Glow Wire Test  | 960 °C                                    | Electrocod   | 2112   |
| Resistance to compression                                       | 3 (Medium $\geq$ 750 N)                   | Resistance to impact   | 3 (Medium $\geq$ 2 J)                          |
| Resistance to bending   | 2 (Pliable)                               | Electrical characteristics                                   | 2 (With electrical insulating characteristics) |
| Protection against ingress of solid objects without accessories | 0   | Protection against ingress of water                          | 0  |
| Resistance against corrosion                                    | Not applicable to plastic conduit systems | Fire resistance  | 1 (Non-flame propagating)                      |
| Insulation resistance   | 100 M $\Omega$ a 500V for 1 minute        | Protection against ingress of solid objects with GF coupling | -  |
| Dielectric rigidity   | 2000 V a 50 Hz for 15 minutes             | Standard   | EN 61386-1 EN 61386-22                         |
| Classification  | 3341                                      |  |  |

### DIMENSIONAL



### TECHNICAL SYMBOLOGY

#### GWT

960 °C

### STANDARDS/APPROVALS

