



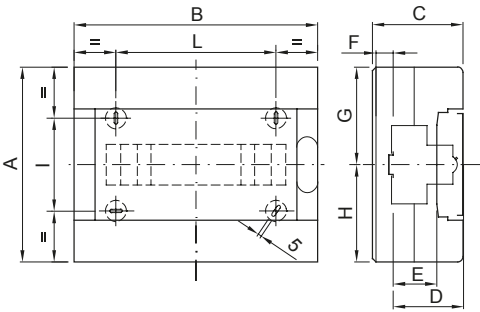
The IP40 protected decorative enclosures are available in sizes from 8 to 72M. They provide superior aesthetic integration and are equipped with screw wiring multipolar terminal blocks, 80 A IP 20. They are available with smoked transparent doors or with blank doors that can be equipped with safety lock, characterized by the "PUSH" opening and closing. The terminal blocks allow to create simple and neat wiring reducing the set-up time of the enclosure.

| | | | |
|--------------------------------------|---|---------------------------|--|
| Insulation class | II (according to IEC 61140 standards) | Colour | White RAL 9016 |
| Outer dim. LxHxD (mm) | 200x180x100 | IP degree | IP40 |
| Dispersible power (W) | 15 | Mechanical resistance | IK08 |
| Rated voltage | 400 V | Door colour | Smoked Transparent |
| Terminal blocks | 80 A - IP20 bipolar holes with screws | No. of modules EN 50022 | 8 |
| Rated current | 125 A | Glow Wire Test | 650 °C |
| Operating temperature | -25 +60 °C | Type of material | Halogen-free in compliance with EN 60754-2 |
| Electrocod | 0321 | Thermo-pressure with ball | 70 °C |
| Accessories for insulation restoring | Screwcaps (GW44623) or fixing brackets in resin (GW44621) | Standard | EN 60670-1 (CEI 23-48) IEC60670-24 CEI 23-49 |
| Insulation voltage | 750 V | Pole 1 (mm ²) | N/E (2x16) + (7x10) |
| Pole 2 (mm ²) | N/E (2x16) + (7x10) | | |

BEHAVIOUR WITH CHEMICAL AND ATMOSPHERIC AGENTS

| Saline solution | Acids | | Bases | | Solvents | | | | Mineral oil | UV rays |
|-----------------|---------------|--------------------|---------------|--------------------|--------------------|---------------|---------------|--------------------|--------------------|--------------------|
| | Concentrated | Diluted | Concentrated | Diluted | Hexane | Benzol | Acetone | Alcohol | | |
| Resistant | Not resistant | Limited resistance | Not resistant | Limited resistance | Limited resistance | Not resistant | Not resistant | Limited resistance | Limited resistance | Limited resistance |

DIMENSIONAL



| Codi ce | Ingombro | | | Montaggio modulari | | | | | Fissaggio | | |
|---------------------------------|----------|-----|-----|--------------------|----|------|-------|-------|-----------|-----|-----|
| | A | B | C | D | E | F | G | H | NR | I | L |
| 8M GW 40 043 GW 40 063 | 180 | 200 | 100 | 77 | 47 | 11,5 | 90 | 90 | 3 | 82 | 100 |
| 12M GW 40 0 45 GW 40 0 65 | 225 | 280 | 100 | 77 | 47 | 11,5 | 112,5 | 112,5 | 4 | 107 | 180 |

TECHNICAL SYMBOLOGY



II (according to IEC 61140 standards)

IP

IP40

IK

IK08

GWT

650 °C



-25 +60 °C

HF

HALOGEN FREE

Halogen-free in compliance with EN 60754-2



70 °C

STANDARDS/APPROVALS

