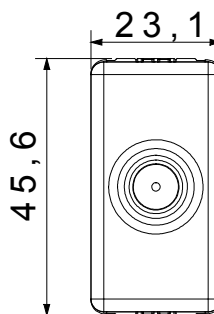
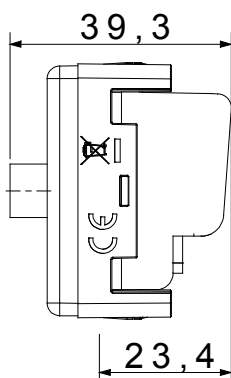
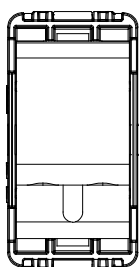




The System modular devices allow the creation of infinite combinations of devices and plates, through a complete range that covers all design, functional and installation needs. Colours and finishes: satin black, elegant and classy. The range includes control units, socket-outlets, breakers, indicators, connectors and devices for the control, safety and comfort of your home.

|              |                          |                    |                                   |
|--------------|--------------------------|--------------------|-----------------------------------|
| Category     | TV/SAT socket-outlet     | Description        | Through wiring                    |
| Type         | -                        | Colour             | Black                             |
| Attenuation  | 10 dB                    | Frequency          | 5-2400 MHz                        |
| Shielding    | Class A                  | For connector type | F-Female                          |
| Standard     | EN 60728-4; IEC 61169-24 | No. SYSTEM modules | 1                                 |
| Cable fixing | With screw               | Case               | Pressure casting zamak metal body |
| Material     | Technopolymer            | Electrocod         | 0131                              |

### DIMENSIONAL



### STANDARDS/APPROVALS

