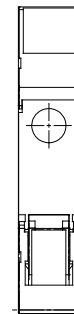
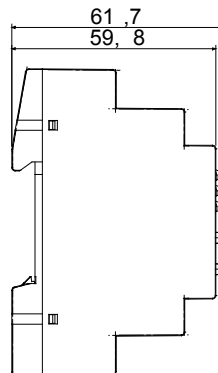
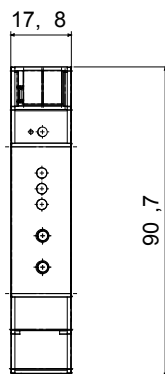




The device enables secure forwarding of telegrams between different lines on a LAN (IP, Ethernet) as a fast backbone and the connection of unprotected communications on a KNX TP line with a secure IP backbone. It also has an extended filter table for main group 0.31 and can cache up to 150 telegrams. The device also acts as a secure interface between IP (Ethernet) and KNX and can be used as a programming interface for ETS®. The device supports KNX Data Secure: this technology increases the security of a KNX installation both during commissioning and during normal operation, thanks to the exchange of encrypted telegrams.

Description	IP/KNX Secure router	Communication	KNX Secure
Connection to the KNX bus	KNX bus terminal	No. DIN modules	1
Power supply	Tramite bus KNX	Current absorbed by KNX bus (mA)	20 mA
Ethernet	LAN RJ-45 socket ; 100BaseT (100 MBit/s)	Supported Internet protocols	ARP, ICMP, IGMP, UDP/IP, TCP/IP, DHCP and Auto IP
Working temperature	-5 ... +45°C	Stocking temperature	-25... +70°C
IP degree	IP20	Relative humidity (non-condensative)	Max 93%
Wiring terminals	With screw	Terminal tightening capacity stranded cables (mm ²)	Max. 2,5
Standard	Directive EMC 2014 / 30 / EU; Directive RoHS 2011/65/EU + 2015/863; EN 63044-3: 2018; EN 63044-5-1: 2019; EN 63044-5-2: 2019; EN 63044-5-3: 2019; EN 61000-6-2: 2019; EN 61000-6-3: 2021; EN 63000: 2018		

DIMENSIONAL



TECHNICAL SYMBOLOGY

IP

IP20

STANDARDS/APPROVALS

