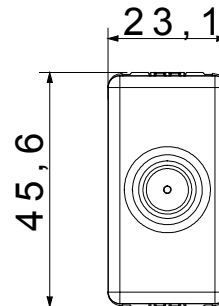
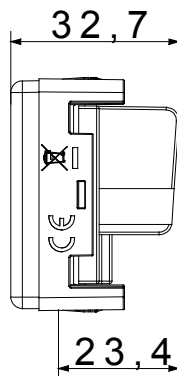
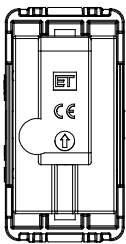




The System modular devices make it possible to create infinite combination between devices and plates, thanks to a complete range that is able to satisfy all design, functional and installation requirements. Colour and finiture: glossy white, bright and versatile  
The range includes commands, socket- outlets, protection, indicators, connectors and devices for the control, safety and comfort of your home.

Categorie	Priză TV	Descriere	Direct
Tip	Cu trecere de curent	Culoare	Alb
Atenuarea	0 dB	Frecvență	5 - 2400 MHz
Ecranare	Clasa A	Pentru tipul de conector	IEC-Male
Standard	EN 60728-4; IEC 61169-2	Nr. Module DE SISTEM	1
Fixare cablu	Conținut	Carcasă	Turnare sub presiune corp metalic zamak
Material	Tehnopolimer	Electrocod	0131

### DIMENSIONAL



### STANDARDS/APPROVALS

