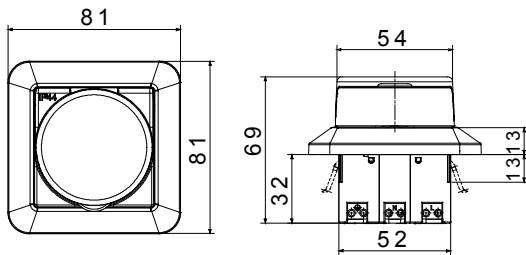




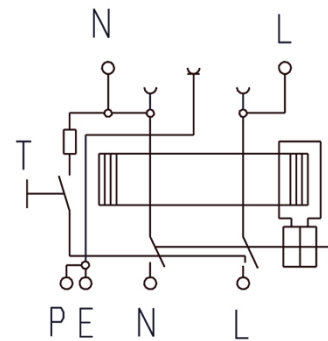
| | |
|----------------------------------------------|-----------------------------------------|
| Description | Socket with residual current protection |
| Code | RCD |
| Nombre de pôles | 1P+N |
| Couleur | Blanc RAL 9016 |
| Courant nominal | 16 A |
| Courant résiduel nominal | 10 mA |
| Type | A |
| Tension nominale (EN/IEC 61008-1, 61008-2-1) | 230/240 V |

| | | | |
|-----------------------------------------|---------------------------------------------------|---------------------------------------------|-------------------------------------------------------|
| Indice de protection | IP44 | Fréquence nominale (Hz) | 50 Hz |
| RCD Delay | Without time delay | Tension nominale tenue à l'impulsion (Uimp) | 4 kV |
| Catégorie de surtension | III | Nominal making and breaking capacity | 500 A |
| Rated conditional short-circuit current | 3.000 A | Section fil rigide | Min 1,5 mm ² - Max 2,5 mm ² |
| Section fil souple | Min 1,5 mm ² - Max 2,5 mm ² | Terminal type | Without screws |
| Position de montage | Flush type or surface type | Température d'utilisation | -5° - +40° (acc. To IEC), -25° - +40° (acc. To EN) |
| Endurance électrique | 2000 | Endurance mécanique | 4000 |
| Standard | CEE 7 - standard sheet III | Earth connection | Mise à la terre |

DIMENSIONS



SCHEMA ELETTRICO



NORMES ET HOMOLOGATIONS

