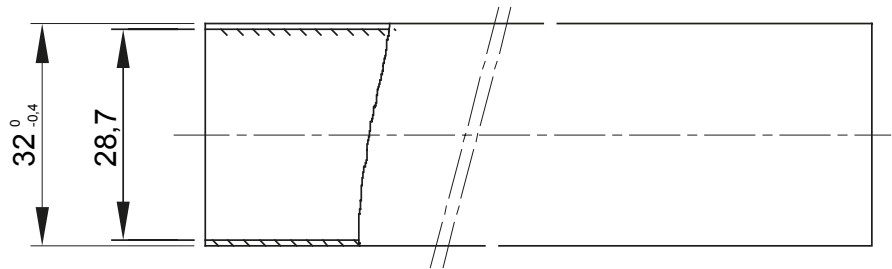


Light rigid conduits RK9 range, made of PVC, classification 22211, available in the following versions:
 2 m length, grey RAL 7035 colour and five diameters, from 16 to 40 mm with sleeved end;
 3 m length, grey RAL 7035 colour and six diameters, from 16 to 50 mm with straight end or sleeved end;
 3 m length, white RAL 9010 colour and five diameters, from 16 to 40 mm with straight end.
 Suitable for electrical and/or data transmission systems and to be installed in uncrowded areas. They represent the best solution for those who do not require a high impact resistance but at the same time do not want to compromise on quality. They can be integrated with spiraled sheaths and wall mounting enclosures. Completing the offer, a wide range of accessories and routing components from IP40 to IP67 protection rating. The RK9 conduits comply with Product Standard EN 61386-1 and EN 61386-21.

| | | | |
|---|--|---|---|
| Colour | Grey RAL 7035 | Material | PVC |
| Length (m) | 3 | Conduits Ø (mm) | 32 |
| Glow Wire Test | 960 °C | Resistance to compression | 2 (Light - 320 N) |
| Resistance to impact | 2 (Light - 320 N) | Resistance to bending | 1 (Rigid) |
| Electrical characteristics | 2 (With electrical insulating characteristics) | Protection against ingress of solid objects without accessories | 0 |
| Protection against ingress of water objects without accessories | 0 | Resistance against corrosion | Not applicable to plastic conduit systems |
| Fire resistance | 1 (Non-flame propagating) | Protection against ingress of solid objects with accessories | 4/6 (It depends on the accessories used) |
| Protection against ingress of water with accessories | 0/5/7 (It depends on the accessories used) | Standard | EN 61386-1 EN 61386-22 |
| Family | RK9 | Classification | 22211 |

DIMENSIONAL



TECHNICAL SYMBOLOGY



STANDARDS/APPROVALS

