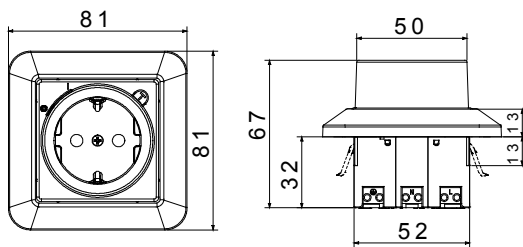




|   |   |
|---|---|
| Description                               | Socket with residual current protection |
| Code                                      | RCD                                     |
| No. of poles                              | 1P+N                                    |
| Colour                                    | Black RAL 9005                          |
| Rated current                             | 16 A                                    |
| Rated residual operating current          | 10 mA                                   |
| Type                                      | A                                       |
| Rated voltage (EN/IEC 61008-1, 61008-2-1) | 230/240 V                               |

|   |   |  |   |
|---|---|--|---|
| IP degree                               | IP21  | Rated frequency (Hz)                   | 50Hz  |
| RCD Delay                               | Without time delay                                | Rated impulse withstand voltage (Uimp) | 4 kV  |
| Overvoltage category                    | III   | Nominal making and breaking capacity   | 500 A   |
| Rated conditional short-circuit current | 3.000 A   | Section rigid cable                    | Min 1,5 mm <sup>2</sup> - Max 2,5 mm <sup>2</sup>     |
| Section flexible cable                  | Min 1,5 mm <sup>2</sup> - Max 2,5 mm <sup>2</sup> | Terminal type                          | Without screws  |
| Assembly position                       | Flush type or surface type                        | Operating temperature                  | -5° - +40° (acc. To IEC),<br>-25° - +40° (acc. To EN) |
| Electrical endurance                    | 2000  | Mechanical endurance                   | 4000  |
| Standard                                | CEE 7 - standard sheet III                        | Earth connection                       | Grounding   |

### DIMENSIONAL



### WIRING DIAGRAM



### STANDARDS/APPROVALS

