

44 CE APTA



Adaptable, by definition

GEWISS

Smart innovation for every installation.

At GEWISS, innovation starts with listening.

That's why we created APTA - a name inspired by the Latin word aptus, meaning suitable, ready, adapted. This range was designed to adapt naturally to the real needs and working habits of professionals, as well as to the diverse environments in which they operate - from the most challenging conditions to everyday installations.

Our product development is deeply rooted in the daily experience of installers, understanding their real needs and challenges on site. We believe that smart innovation is not about technical exercises or aesthetic experiments - it's about bringing tangible value to every installation.

From flexible fixing systems, to intuitive cable entries, and our patented earthing system for armoured cables, our goal is to be on the installer's side, offering solutions that make their work easier, faster, and more reliable.

Because innovation, for us, means supporting professionals where it matters most: in the field.

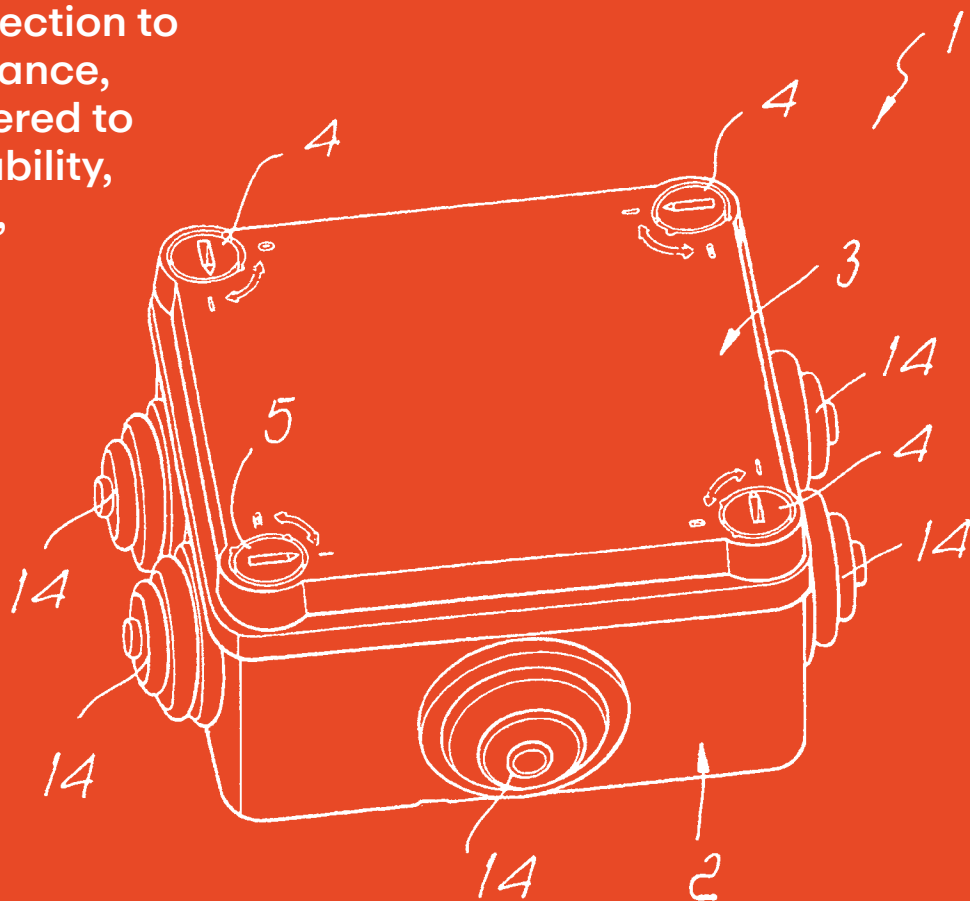


More than 40 years of proven expertise.

At GEWISS, production of junction boxes began in the very early 1980s, and over the decades we have developed deep expertise in plastic materials, molding technologies, and electrotechnical applications-an experience that truly sets us apart in the industry.

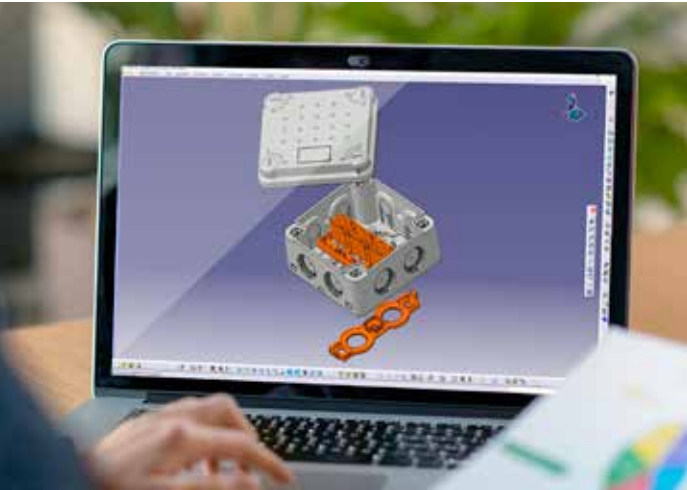
This triple competence enables us to design and manufacture solutions that are not only mechanically robust and electrically safe, but also technically advanced and future-proof-ready to meet today's needs and anticipate tomorrow's trends.

From raw material selection to final product performance, every detail is engineered to ensure maximum reliability, installation efficiency, and long-term value.



Patent drawing from an early patent application.

Core values



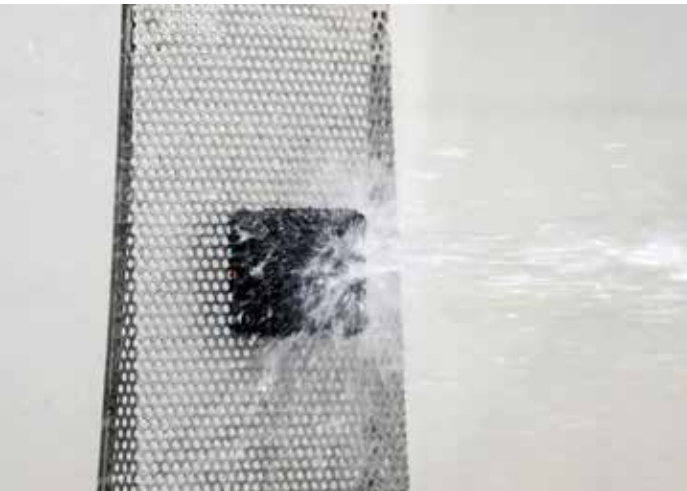
Designed in Italy

Our 44 CE APTA embody the excellence of Italian engineering, combining durability, safety, and smart design. With a focus on quality and reliability, we deliver innovative solutions that meet the highest industry standards and ensure optimal performance in every electrical installation.



Total quality control

Every 44 CE APTA junction box undergoes rigorous individual testing to ensure flawless performance. Our advanced optical inspection guarantees 100% membrane integrity, eliminating the risk of defects. This means our customers receive products they can rely on-freeing their minds to focus on the job, not the equipment.



Certified in-house laboratory

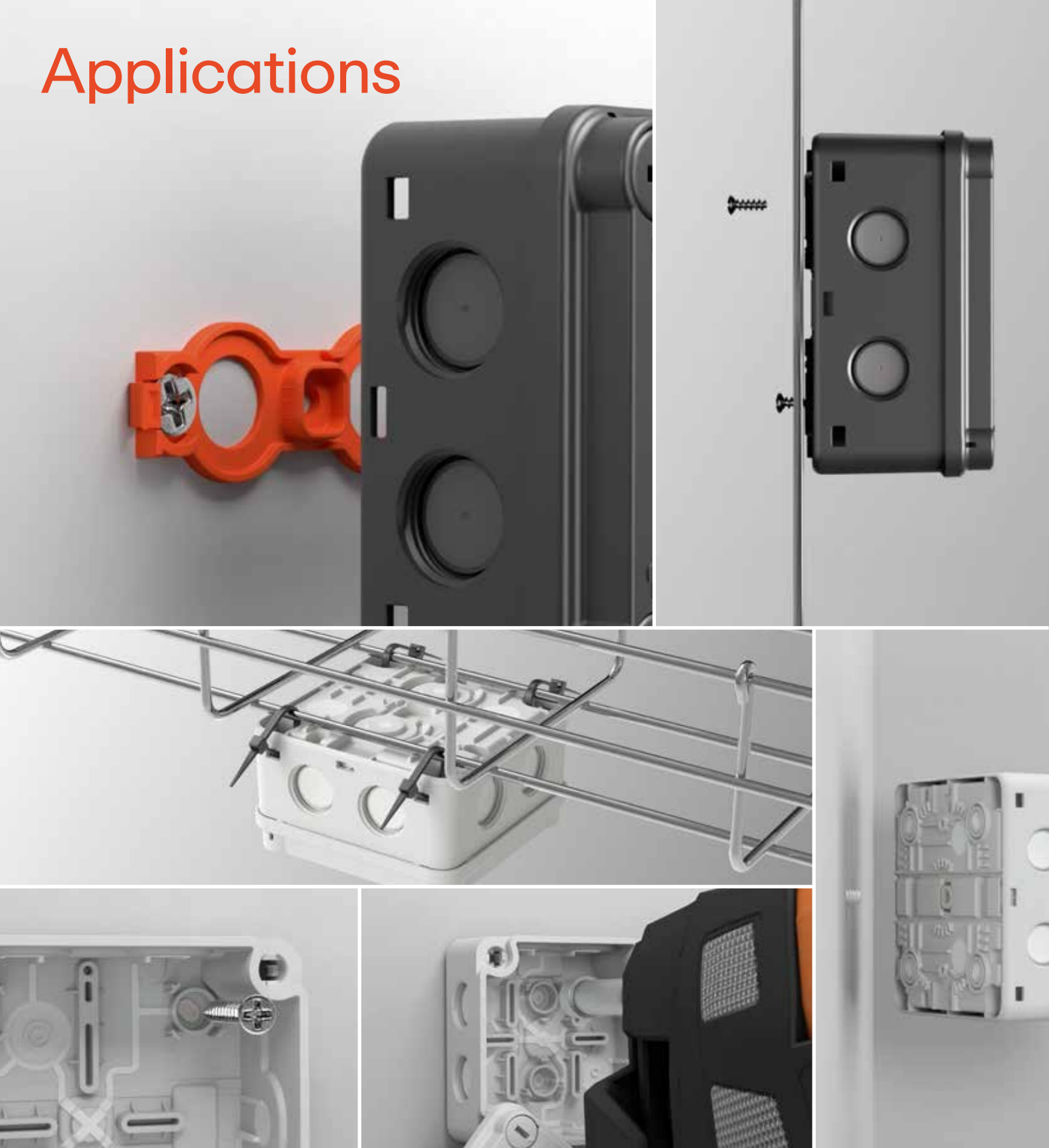
Our in-house laboratory gives us full control over testing and validation, enabling faster innovation, real-time adjustments, and certification of compliance with the relevant Product Standards.



Sustainability

Our commitment is to develop long-lasting products that optimize the use of natural resources and reduce waste throughout their entire lifecycle. Our solutions guarantee the best quality, always with innovation and keeping in mind sustainability aspects.

Applications



Multipurpose box for all applications

From the very beginning, our goal was to create a solution that could adapt seamlessly to a wide range of environments and installation scenarios-whether indoor or outdoor, domestic or industrial, temporary or permanent.

We designed it to respond to the real conditions installers face every day, ensuring that the product performs reliably across different surfaces, mounting options, and cable configurations. This versatility makes the 44 CE APTA box a trusted choice for professionals who need a solution that works-wherever and however they install it.

DOMESTIC

The new 44 CE APTA junction boxes are ideal for all residential uses-from classic lighting installations to garden electrical systems. Thanks to their IP66/IP67 protection and certified UV resistance, they guarantee long-lasting performance even in outdoor environments. Plus, our patented earthing system for SWA cables ensures safe and compliant installations, even in demanding conditions.



COMMERCIAL

Available in three colours-grey, black, and white-the 44 CE APTA boxes blend seamlessly into any commercial setting, from traditional interiors to modern and minimal environments. The sleek design and soft membranes offer a fast and clean solution for indoor installations, combining aesthetics and practicality.



INDUSTRIAL

Designed with installers in mind, the 44 CE APTA junction boxes can be mounted directly onto cable trays-the backbone of industrial systems-using simple cable ties. The geometric pattern on the cover provides visual guides for drilling and makes it easy to install sensors, push buttons or indicators without the need for measurements.



Key features and benefits

Every detail of the new 44 CE APTA junction box comes from direct feedback gathered from installers. We listened, observed, and transformed their daily challenges into practical features that **truly make a difference on site**.

This is not innovation for the sake of it—it's a focused response to real needs, designed to **support professionals in their everyday work**.



All new 44 CE APTA boxes are **UV resistant**, certified according to Product Standard **IEC 60670-22**. Together with their high IP rating, this gives installers the confidence to use them outdoors **without concerns**. It's not just tough—it's tested and proven.



All new 44 CE APTA boxes are **Halogen Free** certified according to the latest **EN IEC 63355** standard. For us, it's not just a badge—it's the result of continuous research into materials, allowing us to offer solutions that are **safe for both people and the environment**.



All our boxes feature a **flat cover** - a **signature design** choice that sets us apart. We believe that increasing internal space doesn't require a bulky shape; instead, we optimise every millimetre inside the box to **create volume through smart organisation**.



Full-perimeter lid seal. This design offers superior resistance to water and dust ingress and reduces the risk of damage compared to traditional gaskets placed on the base edge.



● **M25 knock-out cable entry** designed for larger diameter cables. This configuration requires installation using the locknut of the cable gland.

● **Practical and time-saving IP66 membrane entry.** The IP rating has been tested and confirmed even after ageing. Suitable for cable diameters from 3 mm to 12 mm.



● **1/4 turn captive screw system** ensures secure closure without risk of thread stripping. Screws remain in place even when the box is upside down, allowing safe and confident installation in any position.

● **Clear indication of open and closed position.**

● **Simmetric pattern for quick and easy accessories install without measurement tools.**

● **Flat cover for universal mounting.**



● **Dual lead-sealing points** positioned on opposite sides of the cover help prevent unauthorised access, ensuring enhanced safety and compliance in sensitive installations.

● **M20 threaded entry** for cable gland installation. Enables direct connection and achieves IP67 protection without the need for a locknut.

● All new 44 CE APTA enclosures are equipped with a **rear wall mounting bracket that ensures IP-rated installation**. A dedicated slot allows visual confirmation of correct bracket positioning. This unique system increases security, as removing the box requires the use of a tool.

Fixing methods

The new 44 CE APTA junction boxes feature **six different fixing methods**, offering maximum adaptability to both the installer's preferences and the specific conditions of the construction site. This unique versatility - **unmatched in the market** - allows professionals to choose the most efficient solution without compromising safety or performance.

IP secure membrane guarantees the IP rating even when the box is fixed from the inside using screws or nails. In this case, double insulation must be restored using the dedicated GW44622 cap.

When installed using knock-in fixings, **anti-rotation ribs** grip the wall surface to prevent the box from loosening.

All new 44 CE APTA feature **IP-safe rear cable entries** that allow clean, compliant installations without the need for improvised sealing methods.

Knock in Fix
A special thread on the bottom of size 4 allows wall fixing using the GEWISS dowel code DX51308 or any metal M6 threaded support. The box can be simply screwed in without tools - a fast method that reduces the need for equipment.

All 44 CE APTA boxes feature **multipurpose channel ribs** on the base, designed to accommodate accessories such as the support for Wago terminal blocks or other devices.

Screw Fix
All new 44 CE APTA can be fixed from the inside using screws, as the membrane ensures the IP rating is maintained. In this case, double insulation must be restored using the dedicated GW44622 cap.

The **captive lid** is especially useful when working in hard-to-reach areas, such as ceilings, as it prevents accidental drops. If needed, the opening direction of the lid can be reversed by repositioning the pivot screw.

Cable Tie Fix
Four dedicated fixing slots allow quick and secure installation with cable ties, making them ideal for use on basket trays or for temporary installations.

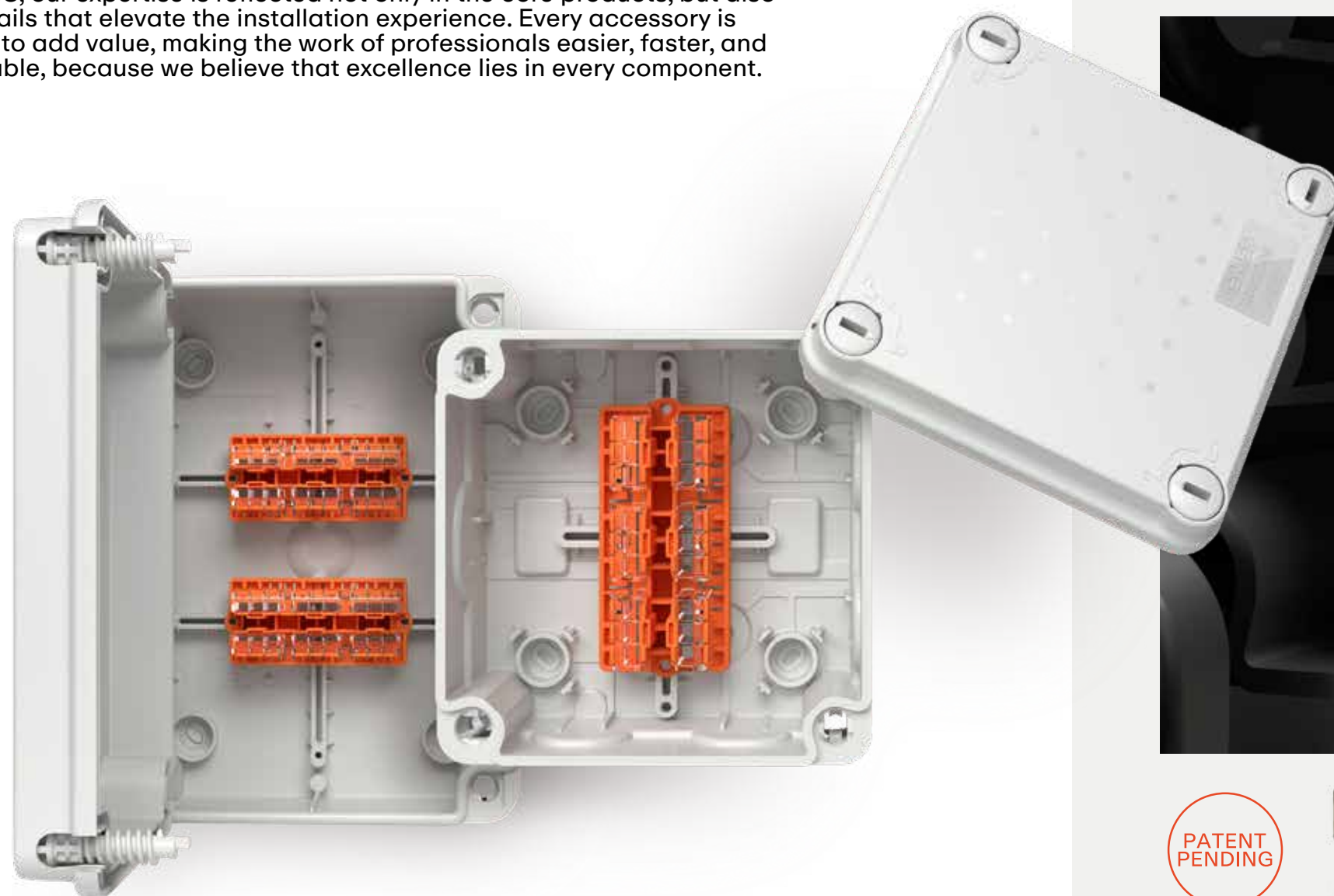
Panel Fix
Two blind holes on the bottom of size 4 allow panel fixing without compromising the box's IP rating, making it a smart solution especially for applications on sheet metal surfaces.

Bracket Fix
All 44 CE APTA boxes are equipped with a rear mounting bracket featuring two slots that allow perfect leveling during installation. The bracket also includes two safety hooks that lock into the box wall - a unique system on the market that significantly increases the holding strength of the box.

Nail Gun Fix
The patented ribs around the fixing points guide the nail gun perpendicularly to the base of the box, preventing any movement during the shot. This ensures the membrane is pierced without damaging the box structure, preserving both IP rating and mechanical strength.

Accessories that empower your system

At GEWISS, our expertise is reflected not only in the core products, but also in the details that elevate the installation experience. Every accessory is designed to add value, making the work of professionals easier, faster, and more reliable, because we believe that excellence lies in every component.



Terminal support for Wago 221 Series

The innovative support for **Wago 221** terminal blocks (up to 4mm²) enables professional and tidy wiring. Designed to accommodate **multiple terminal combinations** (2, 3, and 5-way), it adapts to any installation scenario.

The accessory can **be mounted on all GEWISS junction boxes** featuring multipurpose channel ribs, including in series for contact management. For added safety, the support features two **eyelets for screw fixing**.

The **terminal blocks are positioned vertically for quick access** regardless of the box orientation, and the **lever can be opened even after wiring**.



Scan the QR Code
to view the step-by-step installation.



Earthing clamp

GEWISS has developed a **brand-new system for earthing** the armour of **SWA cables**. The clamp is made of **specific spring steel** that ensures a **secure grip** on the thread of metal cable glands, **adapting to thermal expansion and contraction**.

Despite its compact size, it guarantees **excellent conductivity** and leaves **more space** for wiring.

The clamp is recommended for 2K and 3K sizes, while **size 4 allows earthing with the standard banjo** (always included with SWA cable glands), thanks to the carefully designed internal space.

Technical specifications



GW 44 902 KBK - Black



GW 44 902 KK - Grey



GW 44 902 KWK - White



GW 44 903 KBK - Black



GW 44 903 KK - Grey



GW 44 903 KWK - White

Size 2K

Product Standard	IEC 60670-1, IEC 60670-22
External dimensions	88x57x51 mm
Internal dimensions	81x49x46 mm
IP rating	IP66/IP67
Halogen Free	Yes (EN IEC 63355)
UV Resistance	Yes (IEC 60670-22)
Glow Wire Test	750 °C Case 650 °C Membrane
Installation temperature	-25 ÷ 60 °C
Material	PP + GF Case TPE Membrane PA + GF Bracket
Colours	White RAL 9016, Grey RAL 7035, Black RAL 9005
Lid screws	4x ¼ turn captive
Side cable entries	6x M20x1.5 Threaded entries 6x Membrane entries ø3 ÷ 12 mm
Rear cable entries	2x Membrane entries ø3 ÷ 10 mm
Fixing bracket	Included
Packing unit	10 pcs

Size 3K

Product Standard	IEC 60670-1, IEC 60670-22
External dimensions	88x88x51 mm
Internal dimensions	81x81x46 mm
IP rating	IP66/IP67
Halogen Free	Yes (EN IEC 63355)
UV Resistance	Yes (IEC 60670-22)
Glow Wire Test	750 °C Case 650 °C Membrane
Installation temperature	-25 ÷ 60 °C
Material	PP + GF Case TPE Membrane PA +GF Bracket
Colours	White RAL 9016, Grey RAL 7035, Black RAL 9005
Lid screws	4x ¼ turn captive
Side cable entries	8x M20x1.5 Threaded entries 8x Membrane entries ø3 ÷ 12 mm
Rear cable entries	2x Membrane entries ø3 ÷ 12 mm
Fixing bracket	Included
Packing unit	5 pcs



GW 44 904 NBK - Black



GW 44 904 NK - Grey



GW 44 904 NWK - White

Size 4

Product Standard	IEC 60670-1, IEC 60670-22
External dimensions	108x108x58 mm
Internal dimensions	100x100x52 mm
IP rating	IP66/IP67
Halogen Free	Yes (EN IEC 63355)
UV Resistance	Yes (IEC 60670-22)
Glow Wire Test	750 °C Case 650 °C Membrane
Installation temperature	-25 ÷ 60 °C
Material	PP + GF Case TPE Membrane PA + GF Bracket
Colours	White RAL 9016, Grey RAL 7035, Black RAL 9005
Lid screws	4x ¼ turn captive
Side cable entries	1x ø25 mm Knock out 7x M20x1.5 Threaded entries 7x Membrane entries ø3 ÷ 12 mm
Rear cable entries	2x Membrane entries ø3 ÷ 12 mm
Fixing bracket	Included
Packing unit	3 pcs



Fixing bracket
(Included in Size 2K and 3K)



Fixing bracket
(Included in Size 4)



GW 44 622
Double insulation screw cap



DX 51 308
Fixing dowel for Size 4



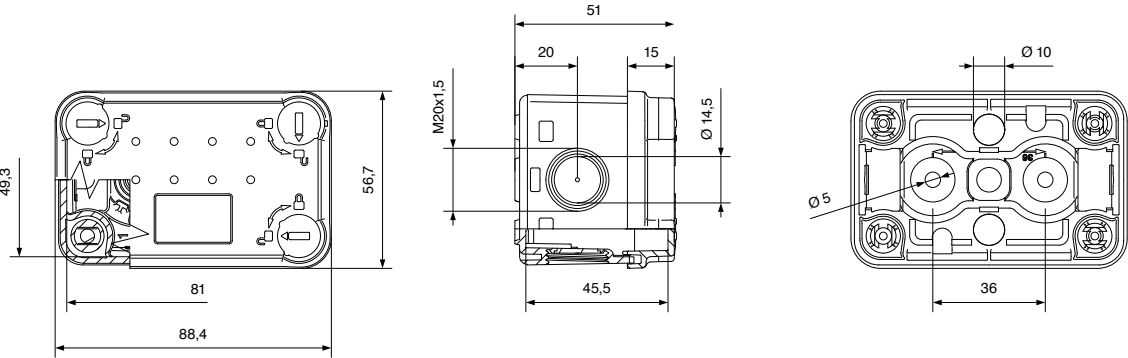
GW 44 741
Support for Wago 221-series terminals



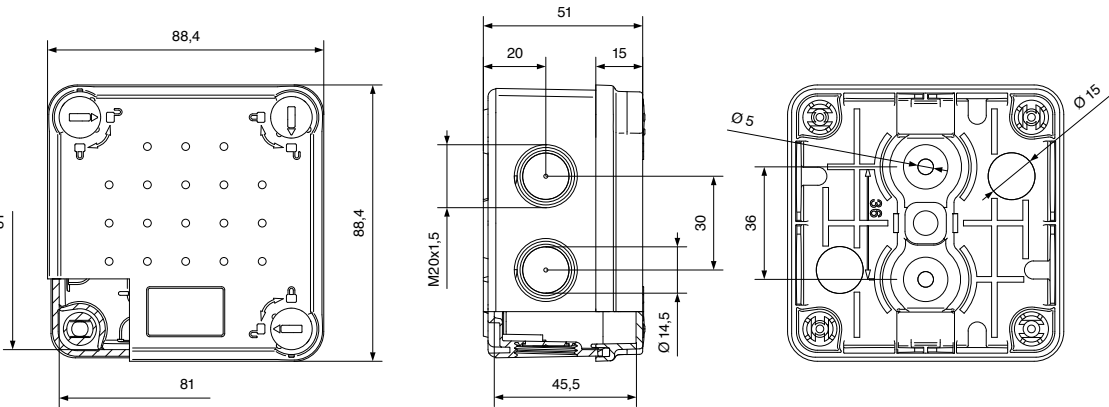
GW 44 742
Earthing clamp for SWA cable glands

Technical dimensions

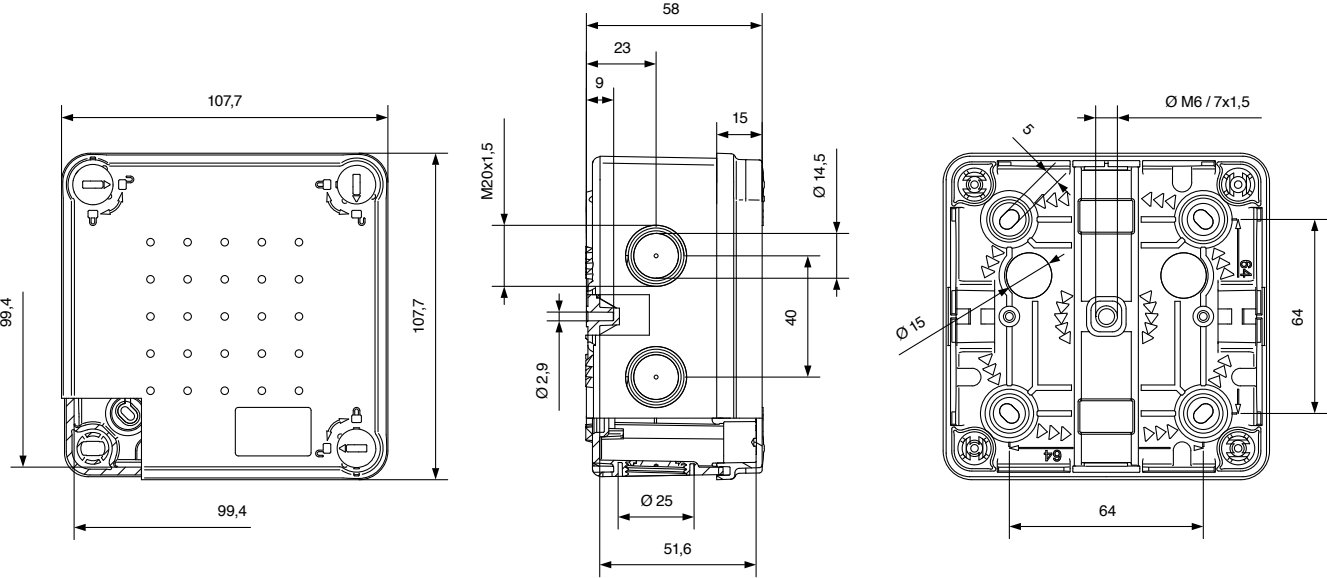
Size 2K



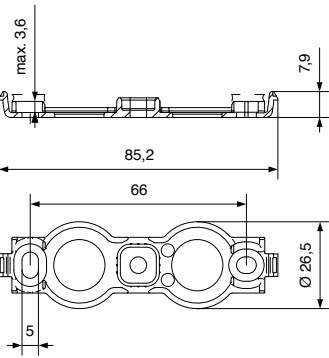
Size 3K



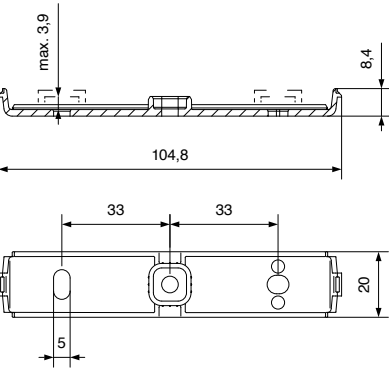
Size 4



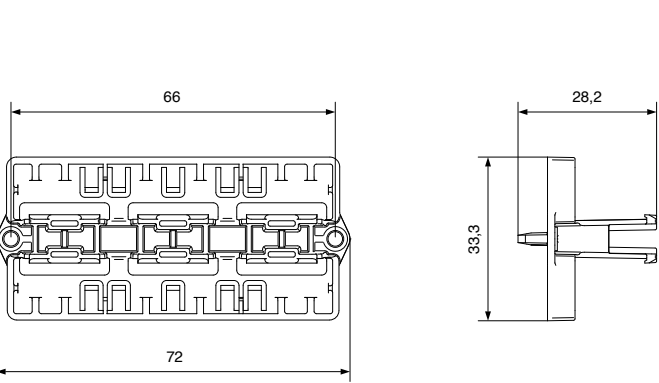
Size 2K and 3K fixing bracket



Size 4 fixing bracket



Support for Wago 221-series terminals



NOTES

GEWISS S.p.A.

Registered Office: Via Domenico Bosatelli, 1
24069 Cenate Sotto (BG), Italy

T +39 035 946 111

E gewiss@gewiss.com

www.gewiss.com

Bergamo Business Register / VAT / Tax Code (IT) 00385040167

Economic and Administrative Index 107496 - Share Capital 60,010,000.00 EUR fully paid up

Company subject to the management and coordination of Polifin S.p.A.

