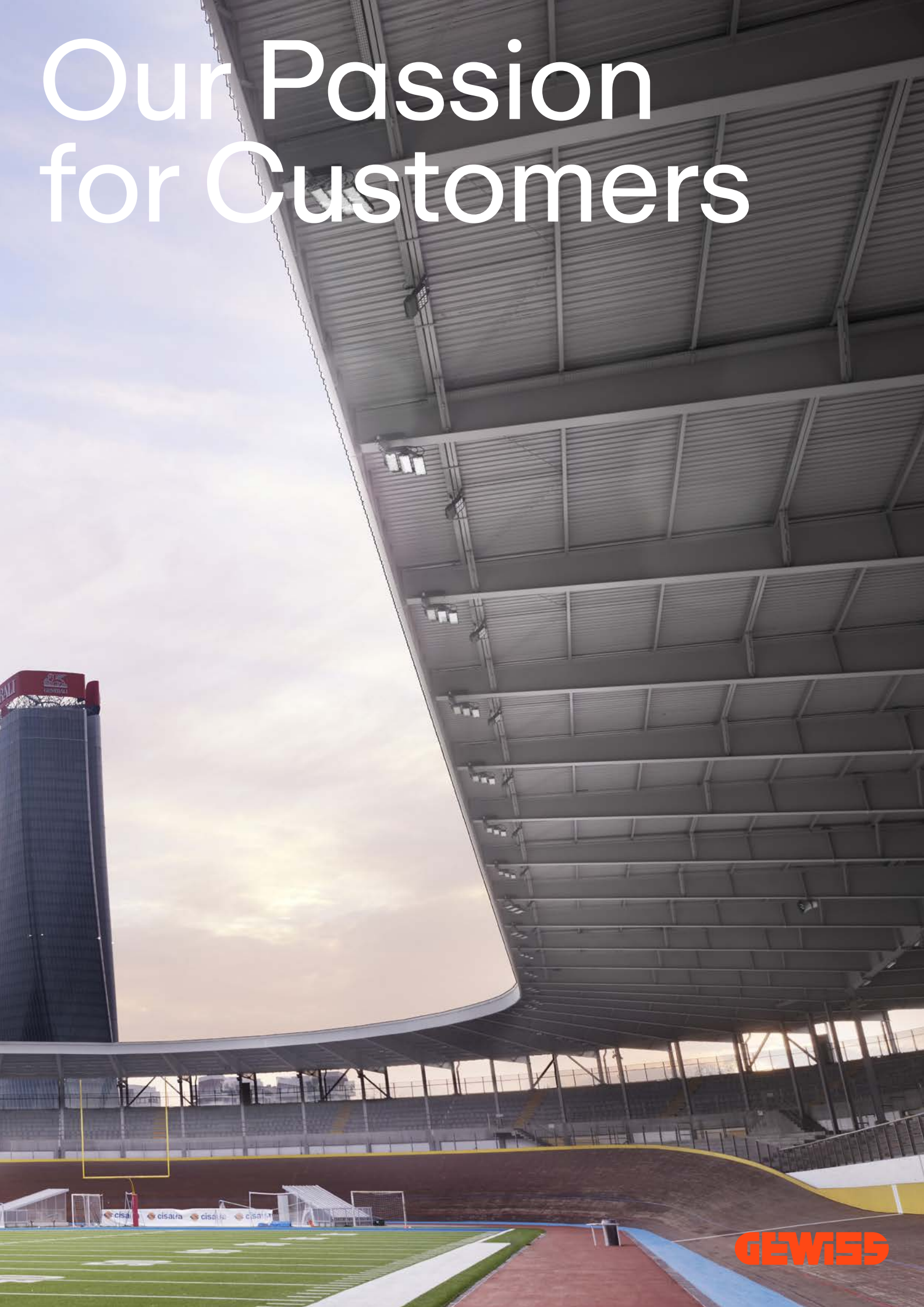


Our Passion for Customers



GEWISS

#ThisIsGewiss

Intro

Our aim is to share a journey where innovation drives a common objective, making the best designed or desired solution a reality.

We love to use passion in what we do, and we love sharing that passion with our partners in finding better solutions. Every project has a story where designers, installers, distributors, and end users collaborate, becoming part of a journey with the common intention of achieving the best solutions and results.

Enjoy this short selection of what we've done and what we can do together to create a better world to live in.
We look forward to the next project we'll do, together.

Index



City Landscape



Palace Maffei | Verona | Italy
San Giorgio in Braida Church | Verona | Italy
Urbanization "Paseillos Universitarios" | Granada | Spain
Avenida de Andalucía | Málaga | Spain

Maffei Palace

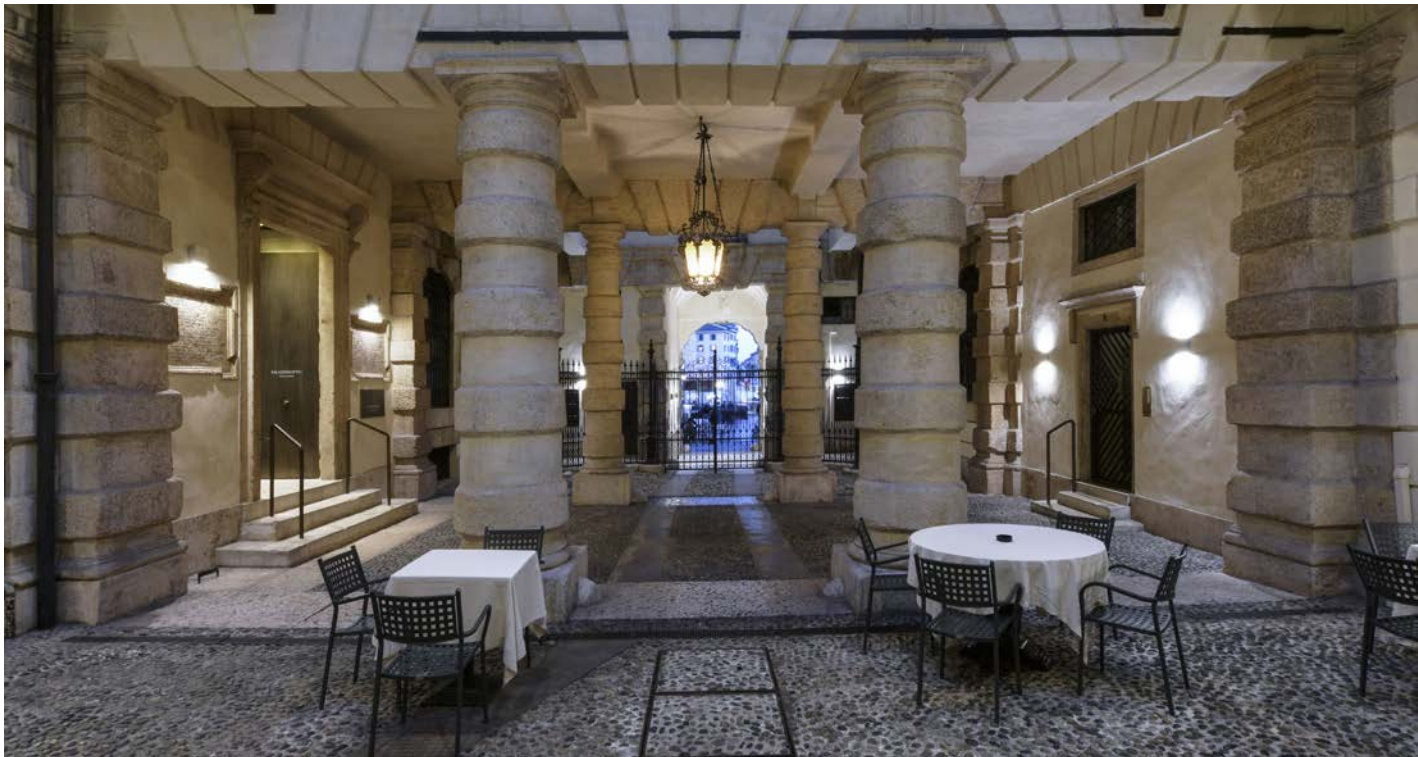
Palazzo Maffei's customized lighting design project.

Solutions implemented in this project:
NOTTURNO
FOCUS+ ZERO
SPIDER+ 10
MIMIK 20

For the stunning Baroque Palazzo Maffei in Verona, Paolo Baldessari's lighting design project, with consulting by PERFORMANCE IN LIGHTING, included compact products with miniaturized technology. Customized solutions feature a special soft glass used for linear floodlights for homogeneous and diffuse illumination, and exterior lighting of the facade that discreetly highlights the decorations while creating the least light pollution possible in the nearby piazza.





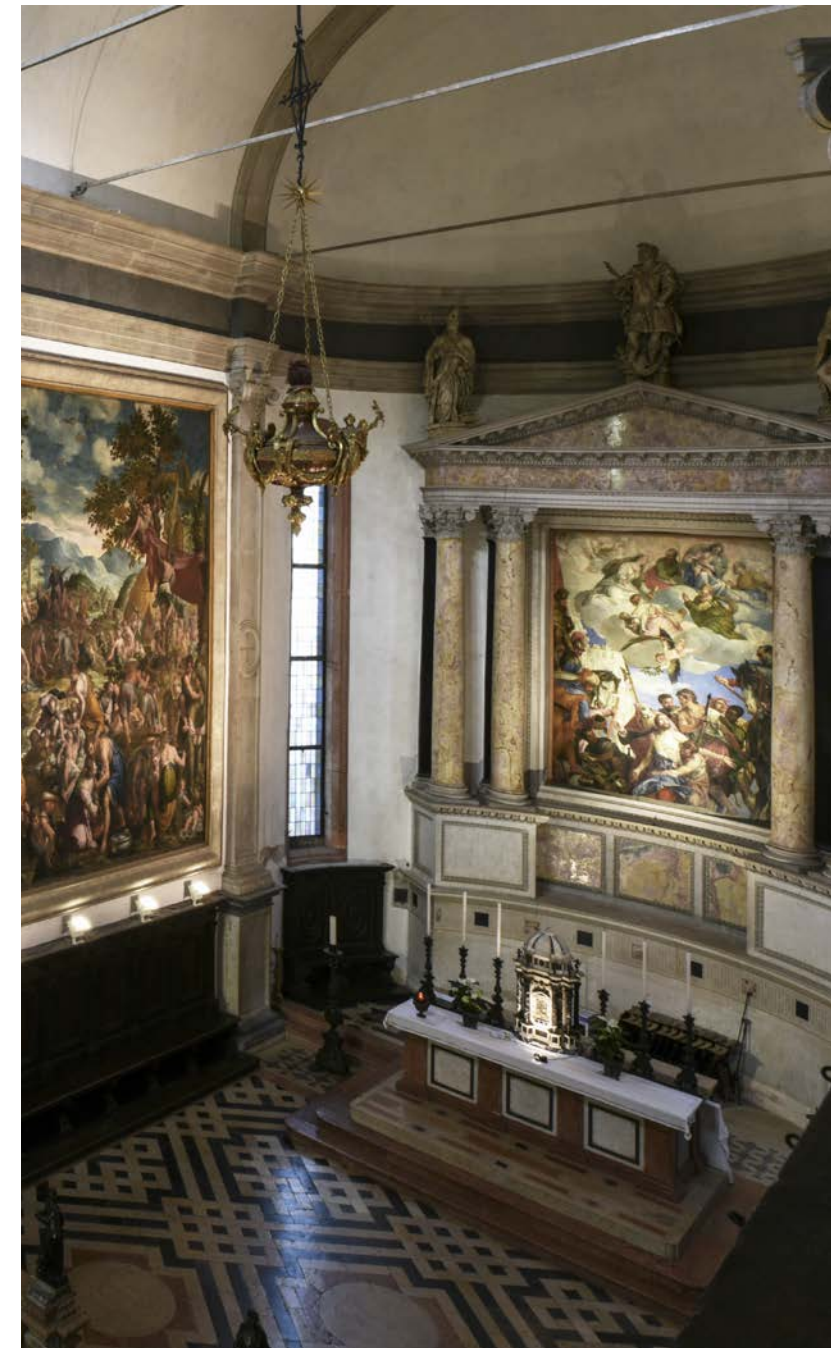


Church of St. George in Braida

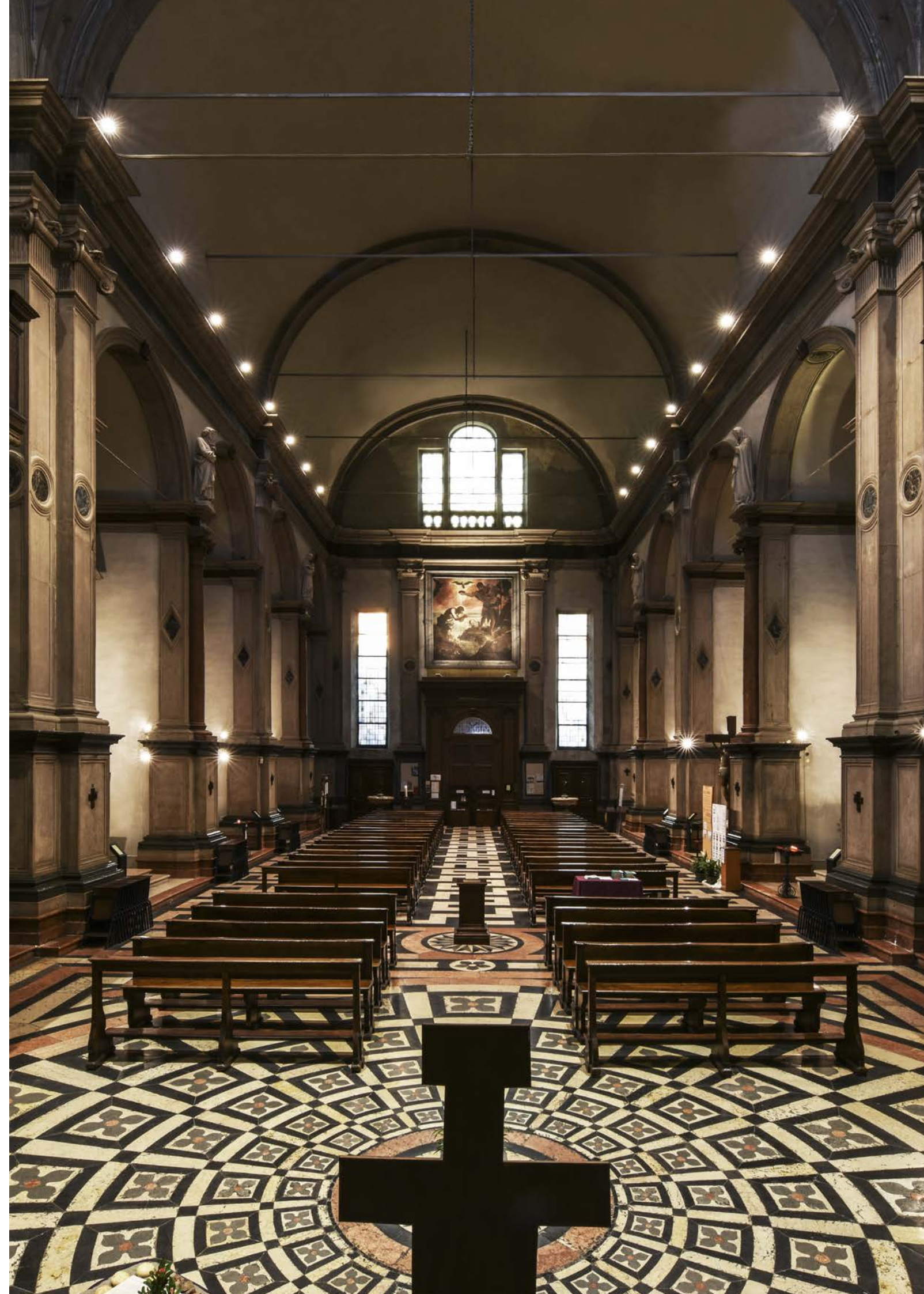
Protecting artworks.

**Solutions
implemented in
this project:**
FOCUS+ 3
GUELL 2
FOCUS+ 1
NOTTURNO

For the Church of St. George in Braida, PERFORMANCE IN LIGHTING's project aimed to give new life to works of art and use spaces to contain operating costs. Customized solutions like the FOCUS+ series of architectural floodlights, used with special-version LEDs in 2,700K warm tone and Ra>90 color rendering, faithfully represented colors and avoided ultraviolet and infrared emissions, thus protecting artworks. A custom RAL 1013 matte color finished the fixtures.







Urbanization university district

Safety & organization.

THEOS MINI GLASS floodlights at different heights provided lighting for pedestrian/ bike paths and nearby streets of Granada's Fuentenueva Campus. Various optics allowed the best lighting solution for optimal visibility on roadways of different widths and the installation of fewer fixtures. Enriched with green spaces in high-traffic area, the project is an essential artery for the city: the lighting intervention benefitted the university community and residents.

**Solutions
implemented in
this project:**
THEOS GLASS





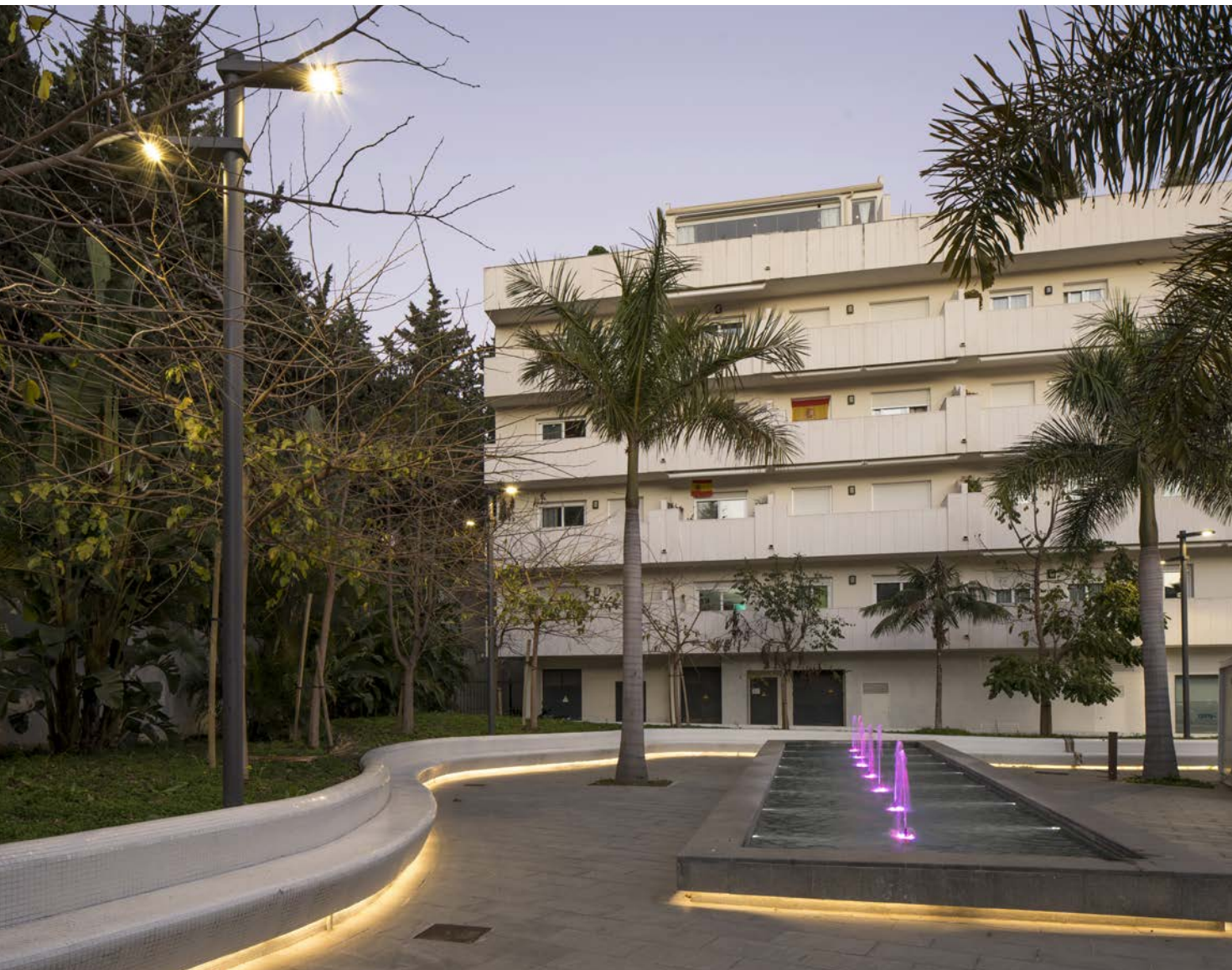
Avenida de Andalucía

Avenida de Andalucía's allure through lighting design.

Estepona's Avenida de Andalucía enjoys enhanced safety on summer evenings: THEOS GLASS devices, equipped with various optics, illuminate streets, promenades, squares and green spaces. LED technology ensures sustainability with reduced management and maintenance costs. Estepona, a historic city dating to Moorish times, retains its allure amid tourist development, with a charming old town featuring flowered balconies and winding pedestrian streets.

**Solutions implemented
in this project:**
THEOS GLASS





Healthcare



I.R.C.C.S. Ospedale
Galeazzi - Sant' Ambrogio
Gruppo San Donato



IRCCS Ospedale Galeazzi | Milan | Italy

IRCCS Galeazzi Sant'Ambrogio Hospital

Safe & technological



GEWISS brings the highest safety and technology to the new Galeazzi-Sant'Ambrogio Hospital in Milan thanks to the ChoruSmart antibacterial technopolymer series for civil applications and the JOINON I-ON e-vehicle charging units in the facility's parking lots. The system components for energy distribution and connection and LED lighting for various areas complete the project, ensuring efficiency and comfort to the 16-story hospital complex, the tallest in Europe.

Solutions implemented in this project:

CHORUSMART Antibacterial range	70 RT HP
BFR	44 CE
JOINON I-ON	42 TV
SMART [3]	68 Q-DIN
Road [5]	BUSBAR
IB	









Hospitality

P
Palma Residence
PARCHEGGIO
riservato ai clienti
customers parking only.
dal 12/9/2022



Palma Residence | Lecce | Italy
Hotel Boutique Donna Anna | Giroc | Romania
HNK Grand Hotel SPA | Muntele Mic | Romania
Hotel Iristar | Fălticeni | Romania

GEWISS contributed to the comfort, functionality and design of Palma Residence, a luxury hospitality structure on the Salento Coast, with a thorough project featuring the ChoruSmart range ICE plates, which combine performance and elegance, the efficient QDX electrical distribution boards, and the JOINON I-CON electric vehicle charging wallbox, designed for optimal integration into private and semi-public contexts while providing an elegant and compact design.

Solutions implemented in this project:
CHORUSMART ICE plates
CHORUSMART Watertight plates
QDX 630L
90 MCB
JOINON I-CON

Palma Residence

A thorough and complex project for Palma Residence.







State-of-the-art technology.

Solutions implemented in this project:
CHORUSMART Home&Building Pro
CHORUSMART GEO plates



Strategically located in Timisoara, Hotel Boutique Donna Anna is an example of sheer luxury thanks to the seamless integration of several state-of-the-art technological solutions. Its location, only 15 kilometers from Traian Vuia International Airport, ensures optimal logistical convenience for business travelers and corporate visitors. The hotel is furnished with the CHORUSMART GEO range and the Home&Building Pro system.





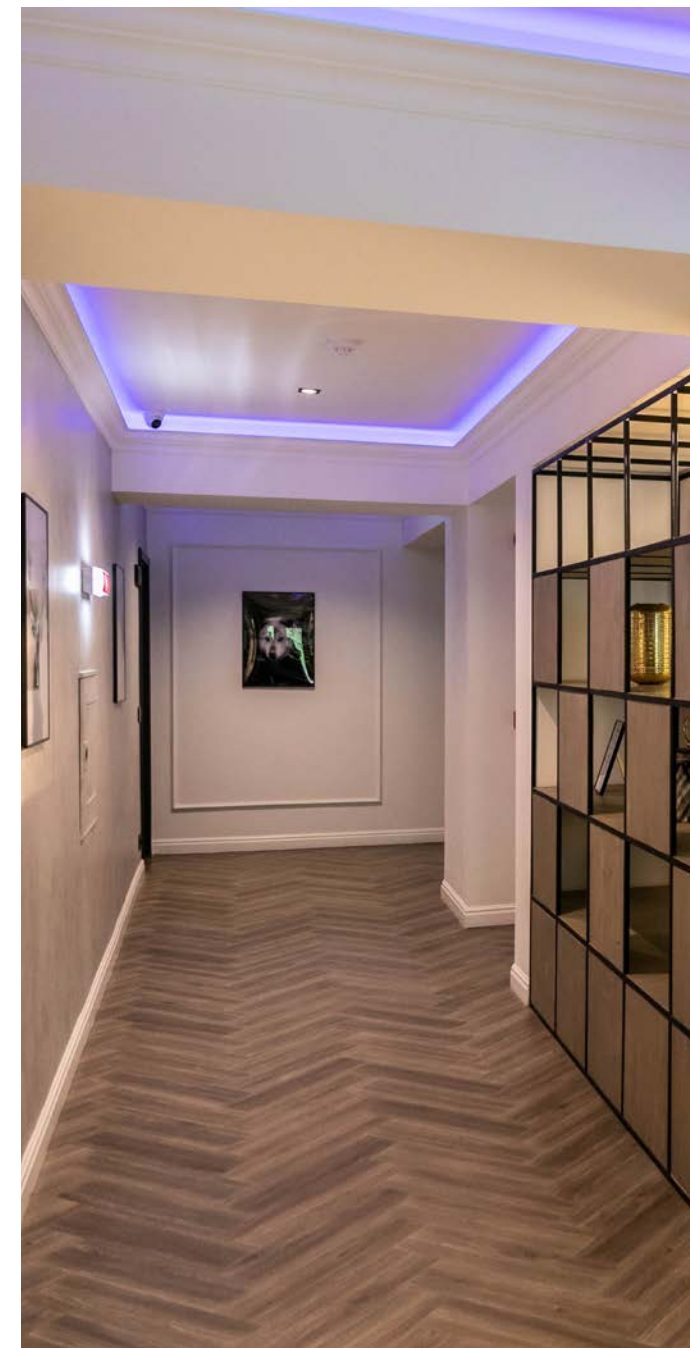
HNK Grand Hotel SPA

Seamless integration.



Solutions implemented in this project:

CHORUSMART Home&Building Pro
CHORUSMART GEO plates
CHORUSMART ICE plates
CHORUSMART ICE Touch plates KNX



The HNK Hotel & Spa spaces near the Caraș-Severin District are designed and built harmoniously with the outdoors and include amenities suitable for all travelers. Its KNX protocol-managed 50 rooms include the ICE, GEO and ICE Touch Knx versions from the CHORUSMART civil series range, meticulously integrated into the hotel design. Their aesthetic appeal, reliability and user-friendly interface make them ideal for facilities that prioritize design and function.



Hotel Iristar

User experience meets sustainability.

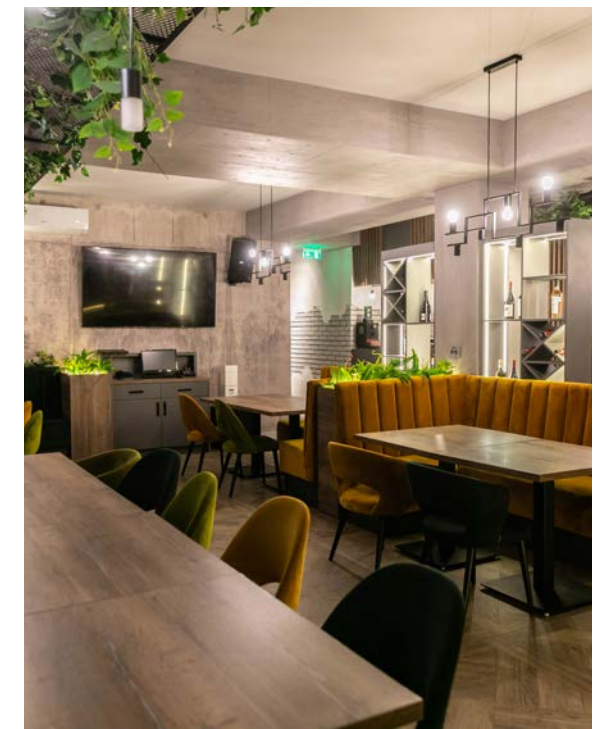


Solutions implemented in this project:

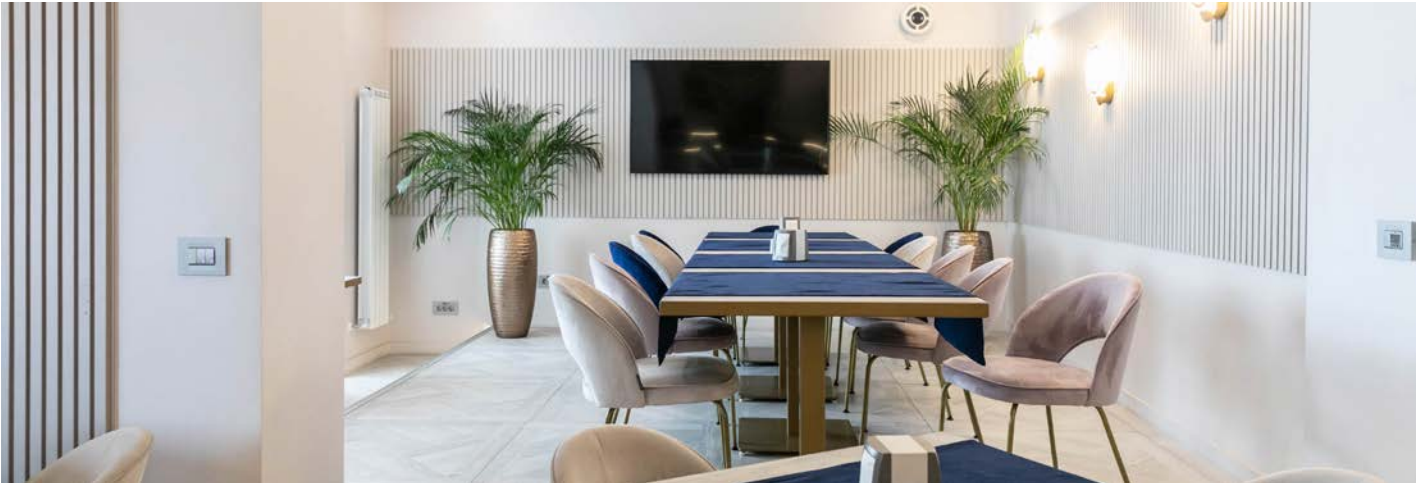
CHORUSMART Home&Building Pro

CHORUSMART GEO plates

90 ReStart



A distinguishing feature of the Hotel Iristar Falticeni is the integration of its electrical system with GEWISS' KNX solutions: the facility is equipped with the Home&Building PRO system, harnessing the potential of the KNX protocol to ensure an optimized user experience from the room's environment controls to classy lighting configurations in the events hall, enhance the management of each area and help the hotel's commitment to sustainable energy practices.





Industry



ABI BV Offices and Production Facilities | Haarlem | Netherlands
DB Schenker | Dubai | UAE
Nakheel Oman Development Company | Muscat | Oman
Welzorg Distribution Center | Raamsdonksveer | Netherlands
Autotrasporti Bertoni | Ternate | Italy
Marcial Catro | Salamanca | Spain

A sustainable lighting plan.



PERFORMANCE IN LIGHTING, with Valstar Simonis and Schulte & Lestraden, designed a sustainable LED lighting plan for ABI BV's new industrial building. KYRO+ 1, GUELL and MIMIK POST illuminate the outdoor areas, while LAMA+ high-bay fixtures, awarded the IF Design Award, light the production areas. The new premises accommodate ABI's growth, providing space for offices, production, storage and the integration of robot line production from another building.

Solutions implemented in this project:

KYRO+
GUELL 3
MIMIK 10 POST
LAMA+

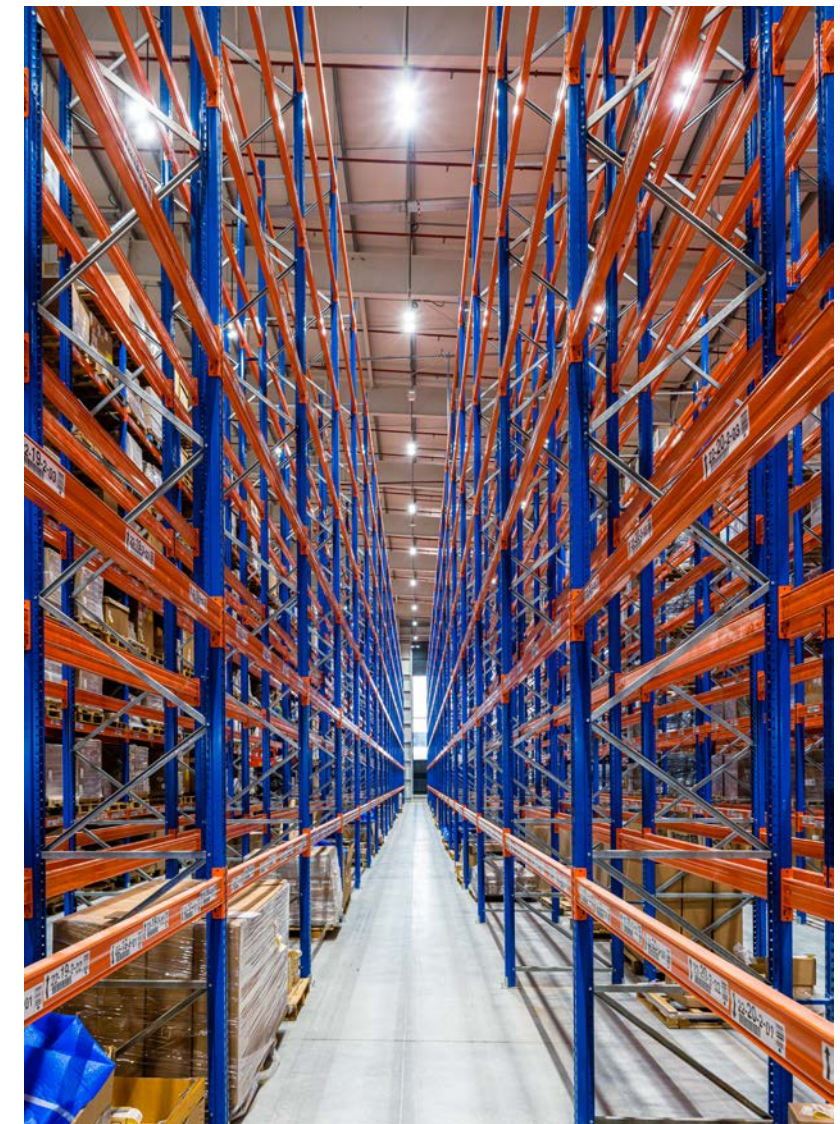




Lighting up a new mega-logistic center.



GEWISS supplied lighting solutions for DB Schenker's third mega logistics center in Dubai: SMART [4] high bays, SMART [3] linear weatherproof, 70RT isolators, interlocked sockets IB range and multi-socket distribution boards Q-DIN. The SMART [4] elliptical optics high bays offered optimum lighting fixtures for the aisle racking areas, ensuring the required lux levels across the unit while providing low energy and low maintenance LED lighting benefits.



Solutions implemented in this project:

SMART [4]
SMART [3]
Road [5]
ELIA FL
68 Q-DIN
70 RT HP
IB



Nakheel Oman Development is a leader in date palm products and sustainable agriculture. Lighting solutions for its indoor and outdoor spaces include SMART [4] 2M LEDs for indoor industrial facilities, SMART [3] watertight fixtures (IP66/69) for production, warehouse and logistics areas, and ROAD [5] street lighting for outdoor spaces, enhancing productivity and safety and supporting Nakheel's commitment to quality production and sustainability.

Nakheel Oman Development Company

Nakheel Oman Development's lighting solutions.



Solutions implemented in this project:
SMART [3]
SMART [4]
Road [5]

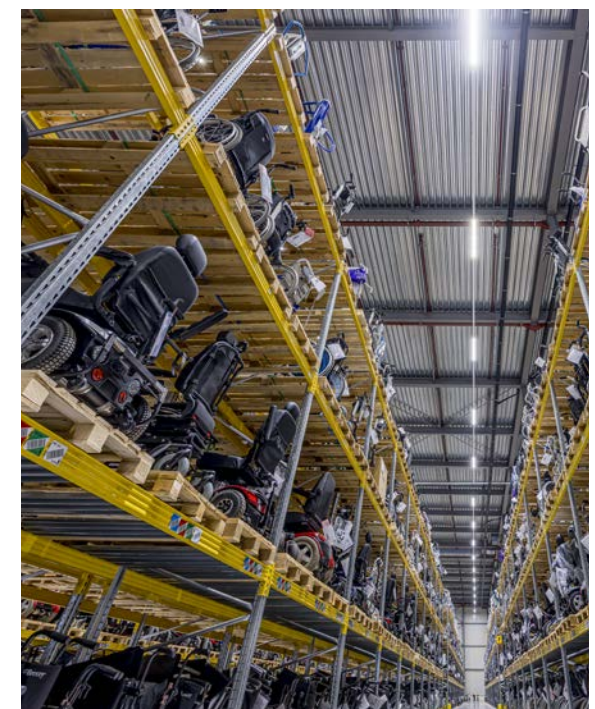
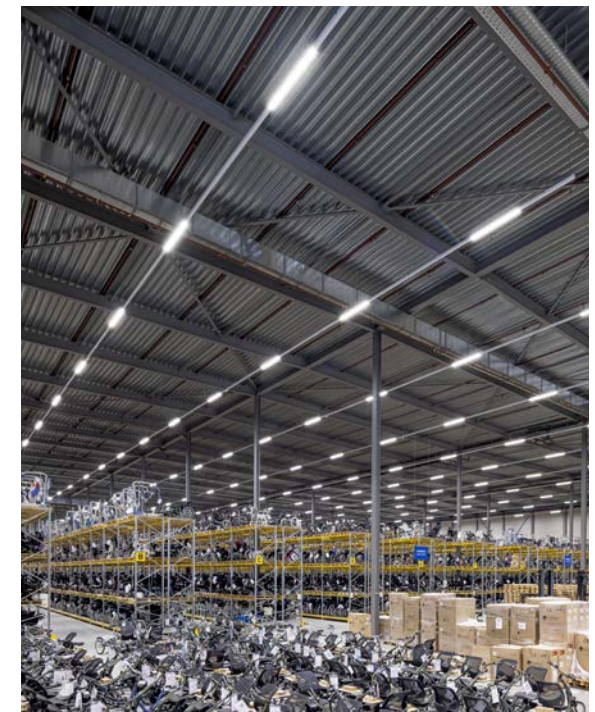


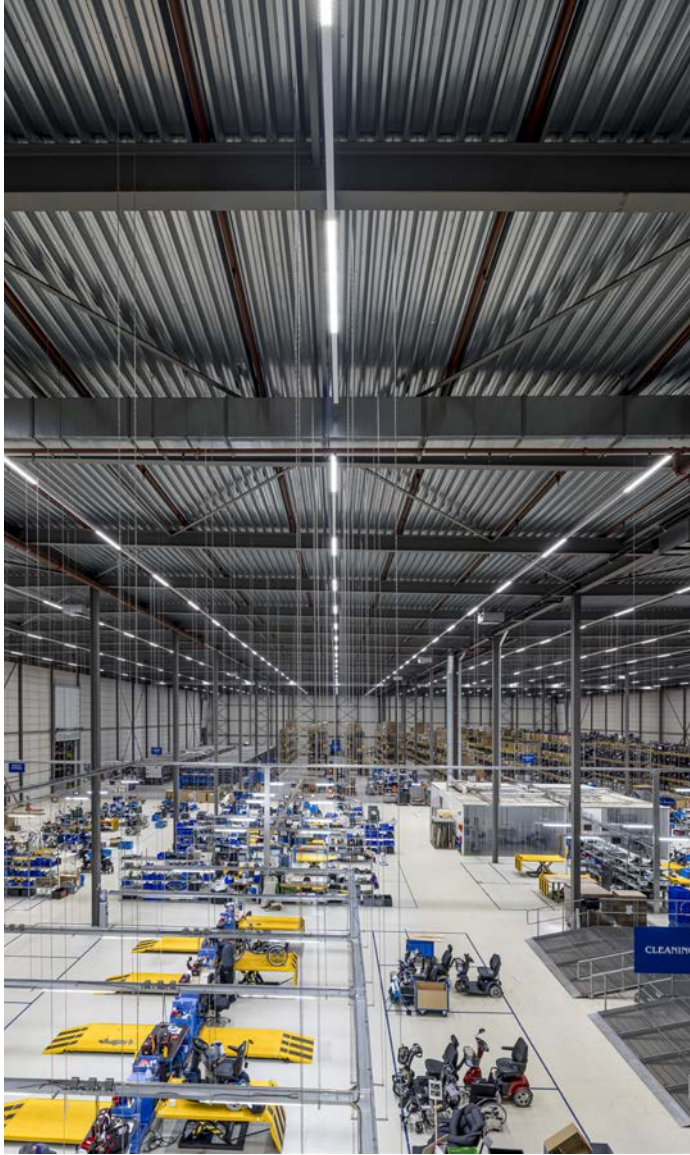
Welzorg Distribution Center

Comfort & energy savings.

Welzorg's ample and modern distribution center on the Zalmweg, in Raamsdonksveer, had T8 light lines that had to be replaced. The company contacted Anker Rotterdam, who opted for luminaires from the TRY LED series for the new lighting project, achieving over 60% in energy savings. There is also a vastly improved light level and a higher uniformity on the work floor for maximum end-customer satisfaction.

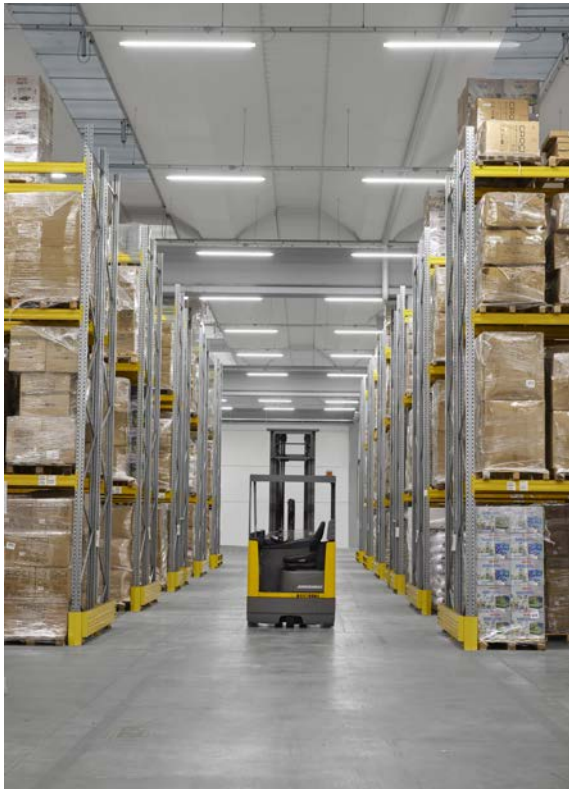
Solutions implemented in this project:
TRY





Watertight performance for Autotrasporti Bertoni.

Solutions implemented in this project: SMART [3]



For Autotrasporti Bertoni, specializing in integrated logistics and national and international shipping, lighting solutions are focused on SMART [3] watertight fixtures (IP66/69) for industrial applications, ideal for production and logistics areas and warehouses. Powered by mid-power LEDs with wire bonding, they feature integrated On/Off or DALI drivers and support up to 25 fixtures in a row through wiring.

Marcial Castro S.L.

Highlighting Spanish's flavor.



In Guijuelo, a town in Salamanca, Marcial Castro, S.L. produces the most internationally renowned Iberian pork in Spanish gastronomy. The company has a wide range of products of the highest quality, carefully controlled in all process stages. In line with the brand's quality, GEWISS illuminated the brand's facilities with its SMART[3] watertight luminaries and installed the IEC 309 series of combined switchboards for sockets and protection.



Solutions implemented in this project:
 SMART [3]
 SMART [3] PLUS
 IEC 309 HP
 68 Q-DIN
 IB
 90 MCB
 90 AM

Office

1

Campus della Salute Università di Pavia | Pavia | Italy
Albinoleffe Academy | Zanica | Italy
Offices Comprensorio Olivetti | Naples | Italy
VETROIN Offices | Castel Mella | Italy
Warmteservice Group Headquarters | Amsterdam | Netherlands
ABI BV Offices and Production Facilities | Haarlem | Netherlands
De Romein Group | Veendam | Netherlands

Campus della Salute Pavia

Functional innovation for Campus della Salute.

The University of Pavia's Campus della Salute is a 13,000 m² Faculty of Medicine and Surgery facility featuring GEWISS solutions for its electrical systems and indoor and outdoor lighting, such as the ELIA, Smart[3] and ESALITE Series. Building automation is managed with the Home&Building PRO system, and the electrical and fiber optic systems are supported by the CHORUSMART ecosystem. These innovations enhance the functionality of this monumental facility.

Solutions implemented in this project:
SMART [3]
ELIA PL
ELIA CL
ESALITE HB
ELIA OL
ELIA FL
CHORUSMART GEO plates
CHORUSMART Home&Building Pro









AlbinoLefte Academy

From light to sustainability.



Solutions implemented in this project:

Road [5]
JOINON I-ON
90 RCD
SMART [3]
CHORUSMART ONE plates
BFR
ELIA EL

The collaboration between Unione Calcio AlbinoLefte and Digital Sports Innovation has led to the creation of the AlbinoLefte Academy, a facility dedicated to the football club's youth sector, in which GEWISS' smart lighting systems, electrical systems and the ChoruSmart ONE range of plates are installed. In addition, the JOINON range of e-vehicle charging stations contributed to the facility's drive toward environmental sustainability.



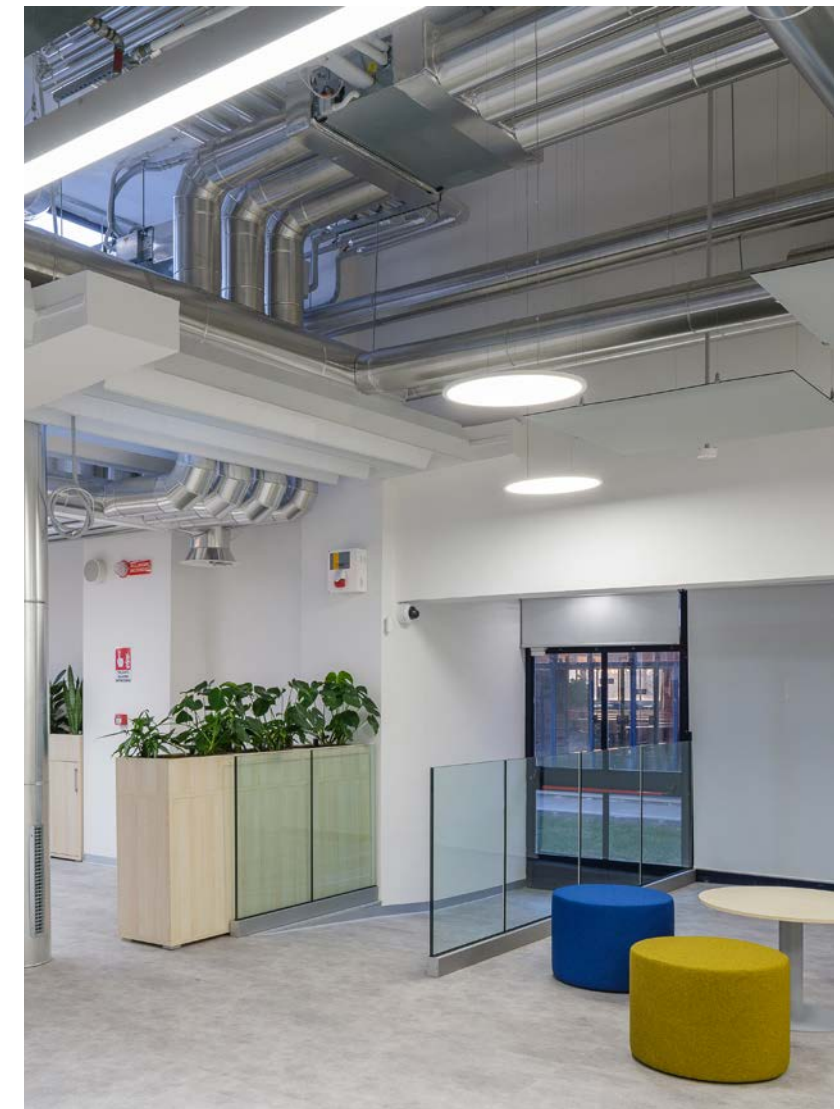


Comprensorio Olivetti: visual comfort and energy efficiency.



Solutions implemented in this project:

MIMIK 20	FL ROUND 555 AB
DLSB LED	SL764+ PL
MULTI+ 30 PC	SL764+ RE
FL ROUND 333 PL	SL787+ PL
FL ROUND 333 AB	SL787+ RE
FL ROUND 555 PL	



In renovating the Comprensorio Olivetti, PERFORMANCE IN LIGHTING provided solutions focusing on natural light, open spaces and energy efficiency, emphasizing visual comfort through LED products that comply with workplace standards. Linear LED luminaires with micro-prism diffusers, round suspended luminaires, ceiling-mounted downlights and wall-mounted fixtures ensure optimal lighting, controlled by the DALI protocol to adapt to natural light conditions.





Advanced solutions for Vetroin.



**Solutions
implemented in
this project:**
LIQUID PL
AS425 LED
SL629 PL

Vetroin's offices feature solutions from PERFORMANCE IN LIGHTING: LIQUID pendant luminaires by Walter de Silva create striking contrasts in executive offices. Recessed ceiling fixtures and AS425 track fixtures blend with the minimalistic design; SL629 PL pendants ensure visual comfort in operational offices with 4000 K light and prismatic diffusers.





Warmteservice Group Headquarters

Lights and delight.

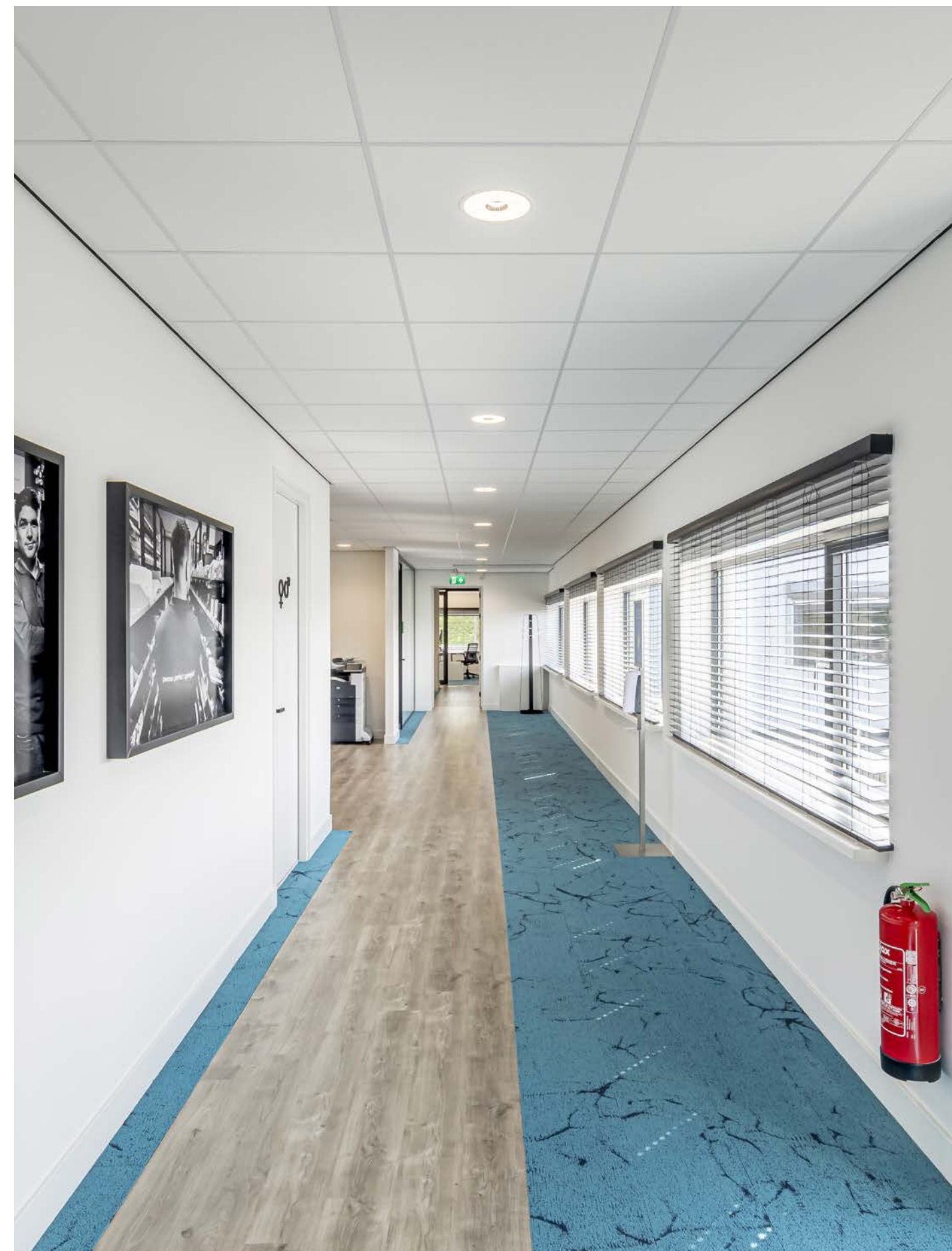


Solutions implemented in this project:

DL ROUND
SL629 PL
EB431-435 LED
B

Warmteservice Group's head office in Amsterdam needed a general update, and Dolman Techniek obtained advice on lighting from PERFORMANCE IN LIGHTING Nederland. The lighting plan for all areas included the DL series with louver for general lighting and the SL629 PL, a screen-friendly luminaire, for workplace lighting. A great project has been delivered with a delighted customer thanks to the close cooperation between all parties.



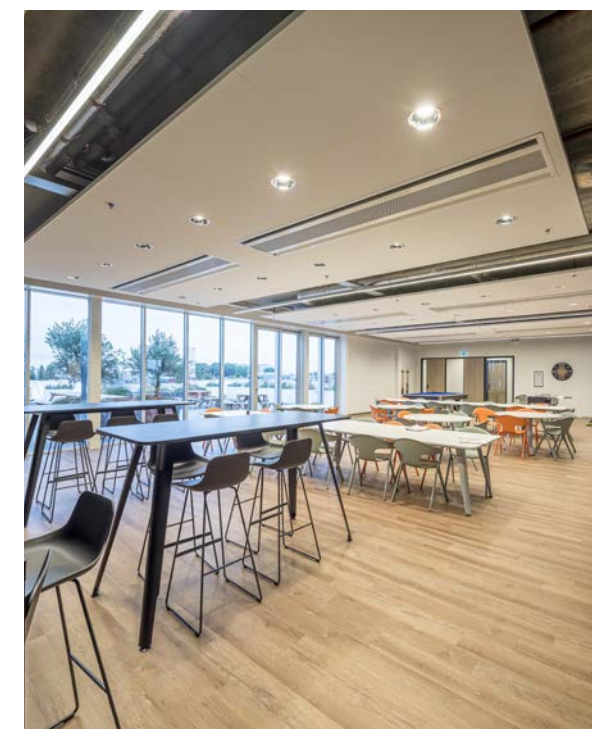


Sustainability in all areas.



Solutions implemented in this project:

DL ROUND
DL SQUARE
SL764+ RE
KYRO+
GUELL 3
MIMIK 10 POST
SL764+ PL



PERFORMANCE IN LIGHTING's project featured the collaboration of consultant Valstar Simonis and electrical installer Schulte & Lestraden. The goal was sustainability in all areas through LED lighting solutions: FL SQUARE 600 fixtures, DL ROUND and DL SQUARE downlights equipped with a DALI dimming control for the offices, SL764, suspended linear lighting and DL ROUND downlights for the company restaurant, KYRO+ 1, GUELL and MIMIK POST for the outdoor area.



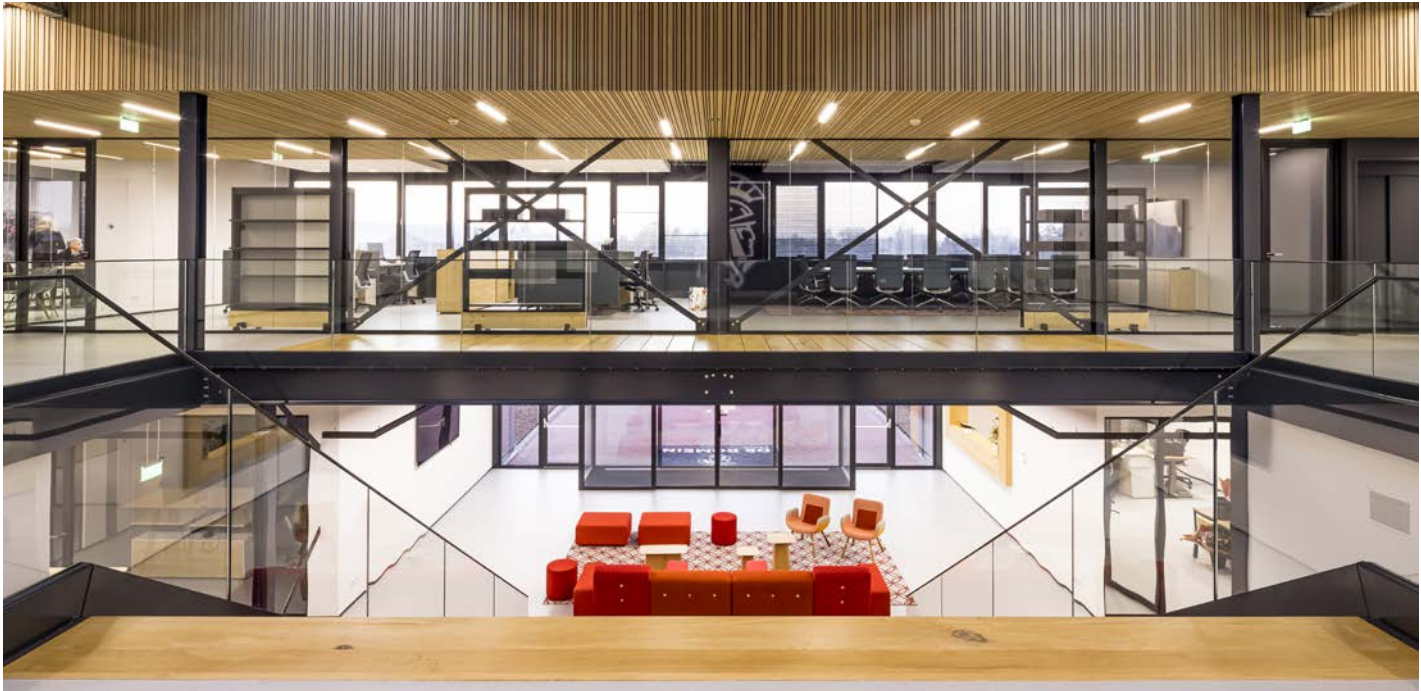
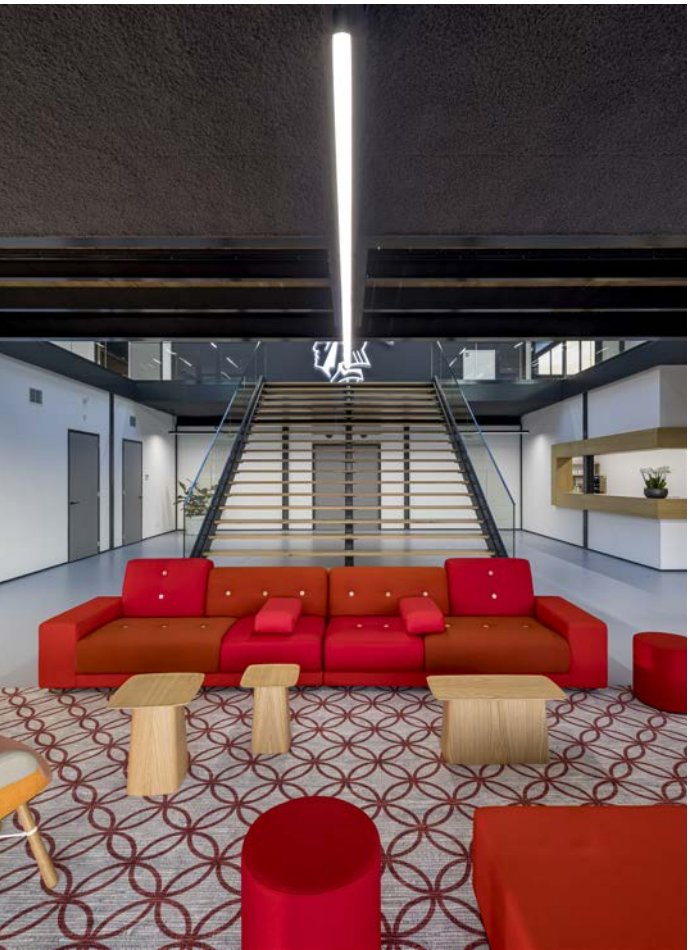
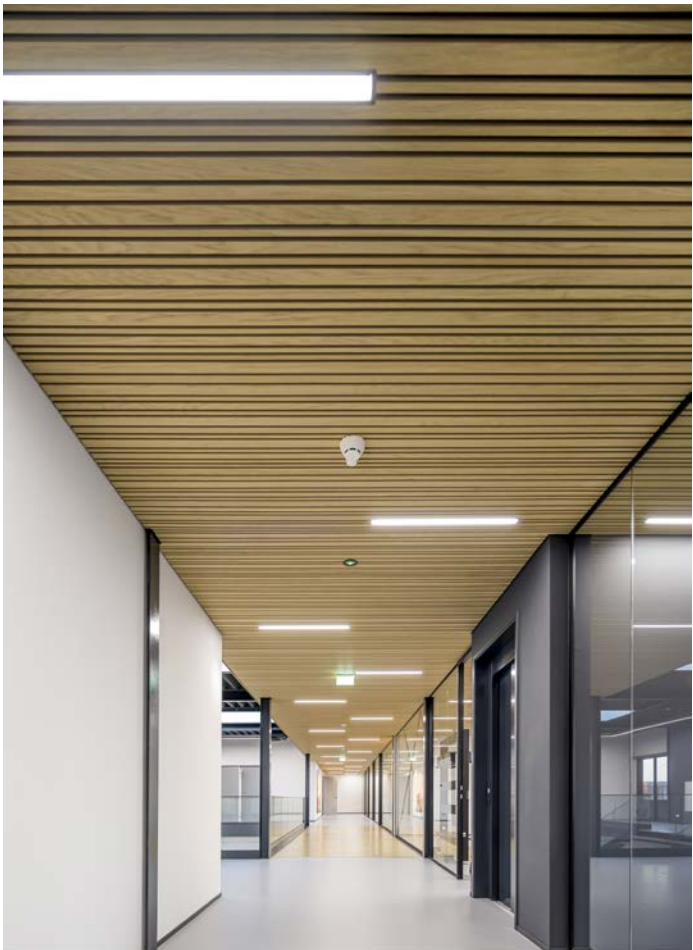
Customized lighting design for De Romein Group.



Solutions implemented in this project:

DL ROUND
NORMA+
SL764+ PL
MANGO+ MIDI
AS425 LED
THEOS GLASS
MIMIK 20
LAMA+
MIMIK 10 POST

For De Romein Group's new building in Veendam, PERFORMANCE IN LIGHTING provided a custom design using LIGHT-PERFORMER® (a digital lighting configuration tool): SL764+ pendants and DL ROUND MAXI with louvers for ceiling islands; OTR 3-phase rails and AS425 rail spots in the canteen; MANGO+ MIDI fixtures and DLSB150 downlights in the toilets and roof. NORMA+ and LAMA+ fixtures illuminate the workshop and storage space. Outdoors, MIMIK 10 POST lights the footpath and THEOS GLASS MINI the car park.



Residential



House in Albánchez | Almería | Spain
Palm Beach Torrealba | Málaga | Spain
Residential Complex Bastiaanpoort | Delft | Netherlands

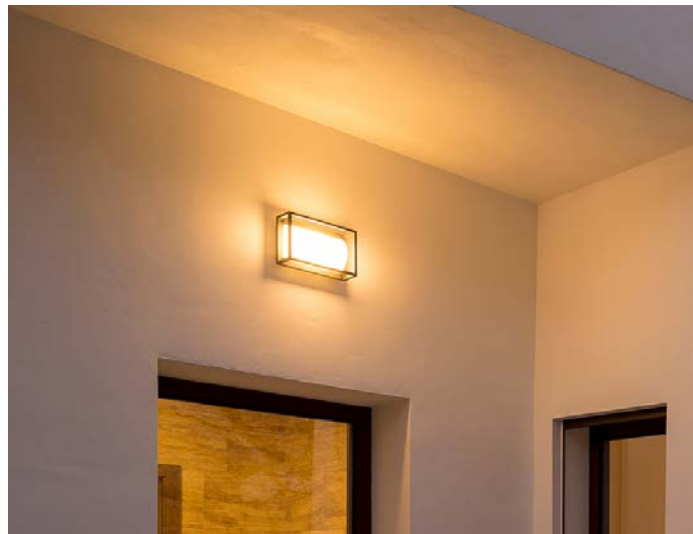
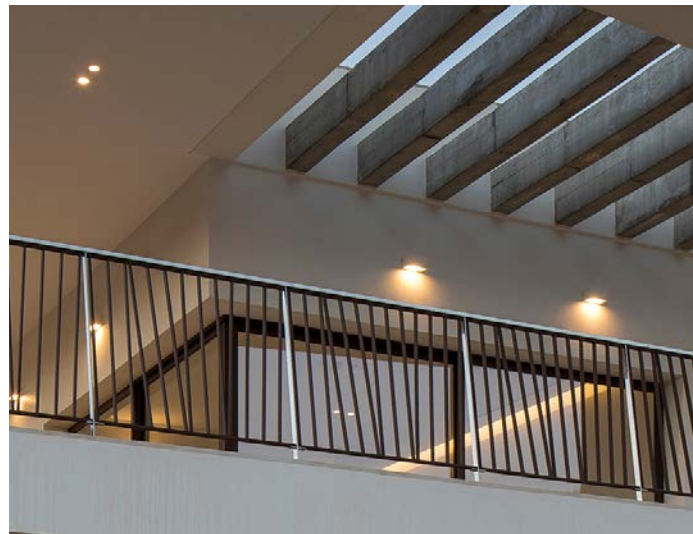
House in Albánchez

Meticulous lighting design for Casa Albánchez.

Casa Albánchez is a refined private residence with a contemporary architectural language. BIG Architectural Lighting Studio meticulously designed indoor and outdoor lighting to complement the architecture's spatial dynamics. Warm light fixtures enhance the stone finishes, while QUASAR 20 wall luminaires provide general terrace lighting. INSERT+ 1 and INSERT+ 2 recessed wall luminaires secure perimeter walkways, and LANTERNA NK marks the entrance.

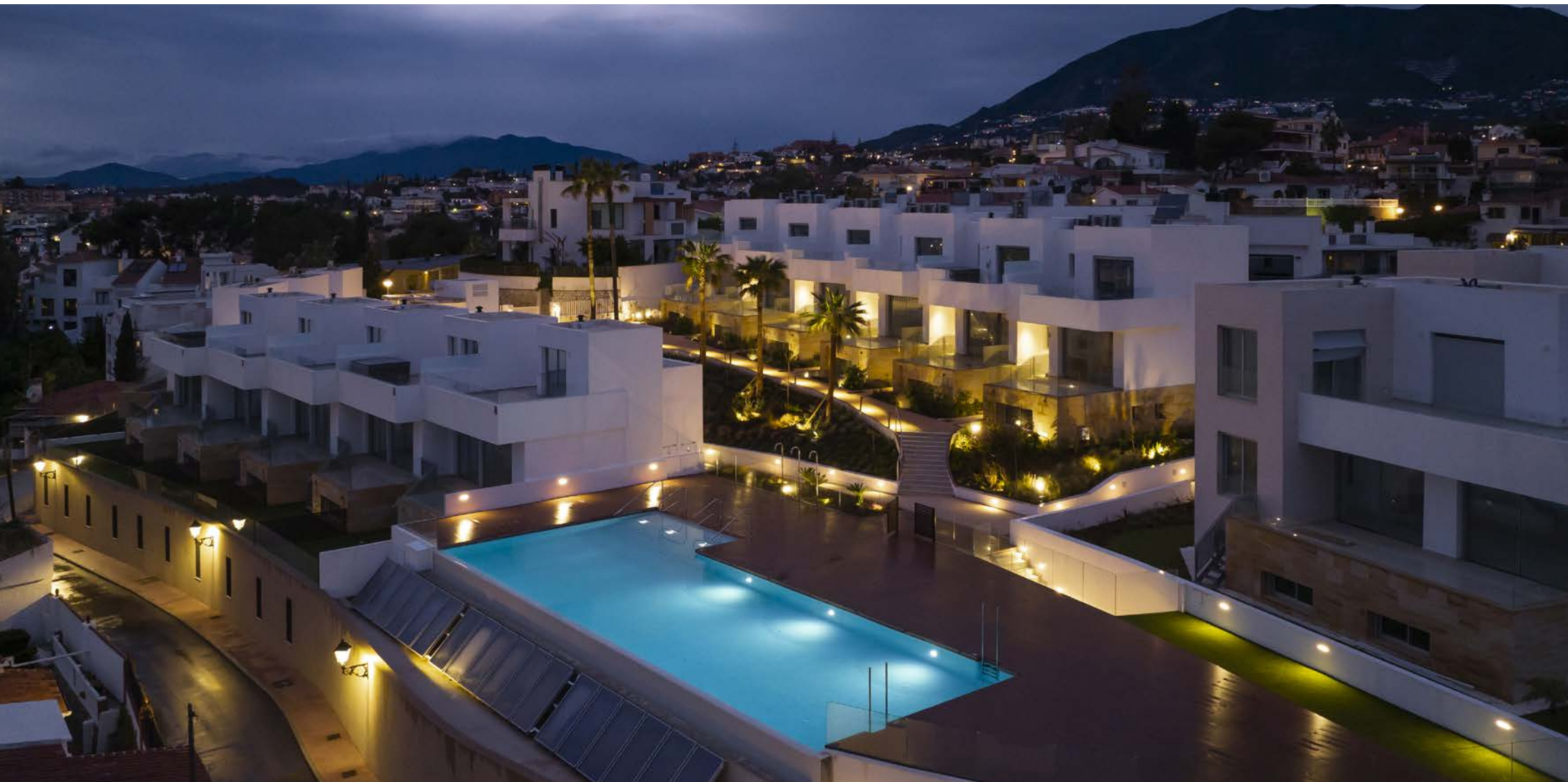
Solutions implemented in this project:
QUASAR 20
LANTERNA NK 21/27
INSERT+ 1/2







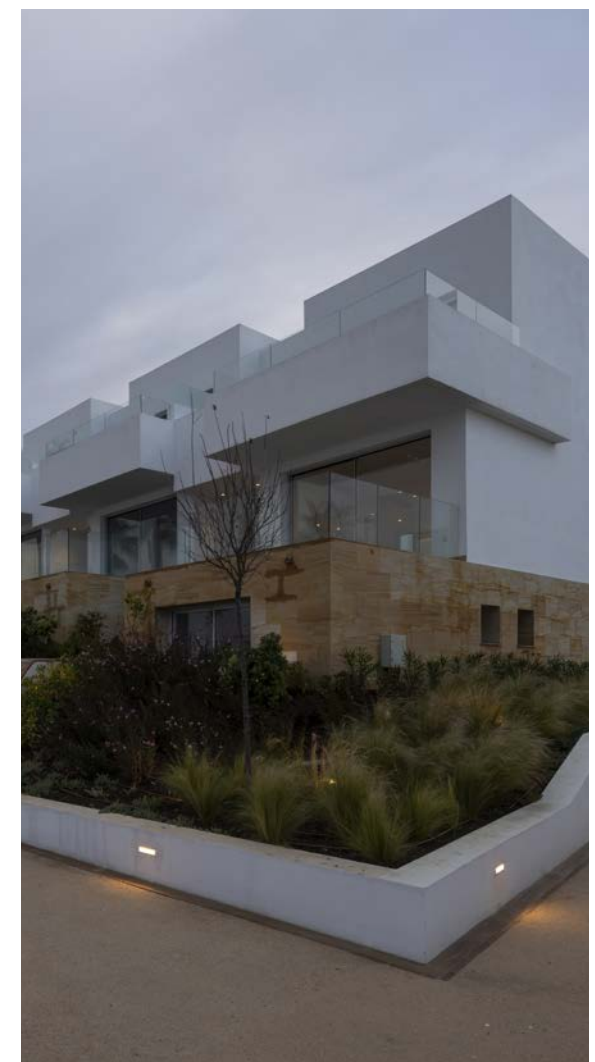
Comfort and sustainability for Palm Beach Torreblanca.

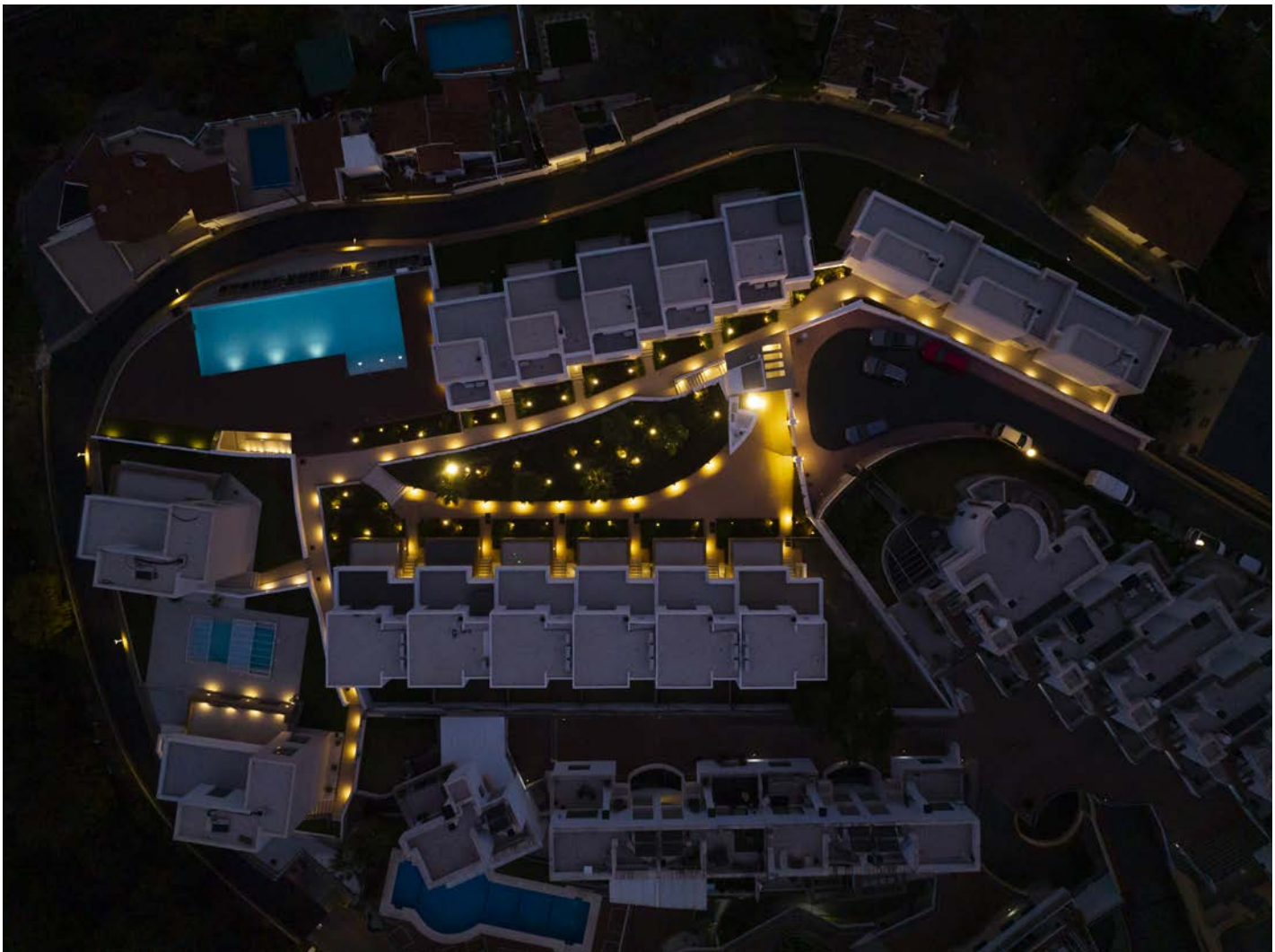


**Solutions implemented
in this project:**

MIMIK 20
MIMIK 10 POST
INSERT+ 1/2
INSERT+ ZERO CLIP
LANTERNA NK 21/27
FOCUS+ ZERO
CRICKET+ 20

Palm Beach's luxury homes in Torreblanca, Malaga feature PERFORMANCE IN LIGHTING's outdoor solutions. MIMIK 10 POST bollards and INSERT+ wall luminaires illuminate walkways; CRICKET+ ground lights and FOCUS+ ZERO floodlights highlight green areas. Finally, LANTERNA NK 21/27 and MIMIK 20 luminaires accentuate building walls. The homes feature top-quality materials, advanced technology and meticulous interior design for comfort and sustainability.





Sustainable lighting innovation.



**Solutions implemented
in this project:**
QUASAR 10
QUASAR 30

63 rental apartments have been built on the border of the historic center of Delft and the new Zuidpoort area. On the site where the V&D department store once stood, there is now a sustainable new complex consisting of a commercial plinth with three floors of rental homes: Bastiaanpoort. QUASAR 10 fittings have been chosen for every front door.



Retail



Volvo Van Roosmalen | Veldhoven | Netherlands
Oaziz Shopping Mall | Madrid | Spain
Volvo Autosueco Showroom | Almada | Portugal
Commercial Building Warmteservice | Gouda | Netherlands

Exclusive lighting atmosphere for Volvo van Roosmalen.



PERFORMANCE IN LIGHTING and Luxor designed a lighting plan for Volvo van Roosmalen's new 2-story showroom, offices and outdoor area: DL ROUND, DL SQUARE downlights, and tiltable EB spots with DALI dimming highlight cars in the showroom. DL SQUARE and FL555 PL illuminate offices, also with DALI dimming. Outdoor lighting features KYRO+ 1, while IF Design award-winning TRACCIA enhances accents throughout.

Solutions implemented in this project:

TRACCIA
FOCUS+ 1
KYRO+
QUASAR 30
FL ROUND 555 PL
DLSB LED
DL SQUARE
DL ROUND
EB431-435 LED



Oasiz Shopping Mall

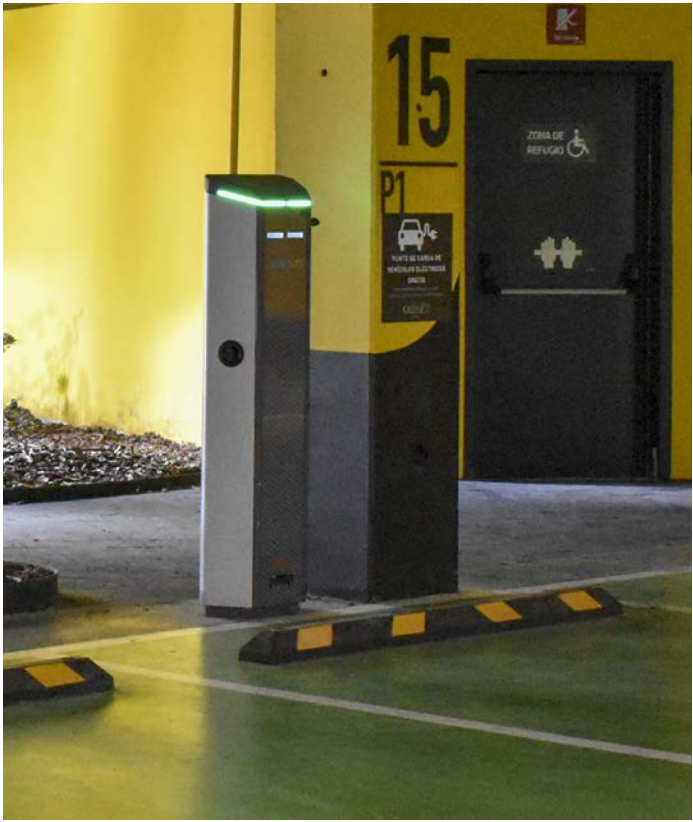
Contributing to Oasiz Madrid's eco-sustainability.



Oasiz Madrid, Spain's vast shopping center, offers extensive outdoor spaces, ample parking, 117 shops, diverse leisure amenities, a lake and a beach. GEWISS contributed to its sustainability with its JOINON range, featuring I-ON electric vehicle charging stations for public use, highly reliable thanks to its IP55 protection and IK10 robustness. Complementing this is the JOINON I-CON wallbox, meeting IEC 61851-1 standards for private and semi-public settings.



**Solutions implemented
in this project:**
JOINON I-CON
JOINON I-ON



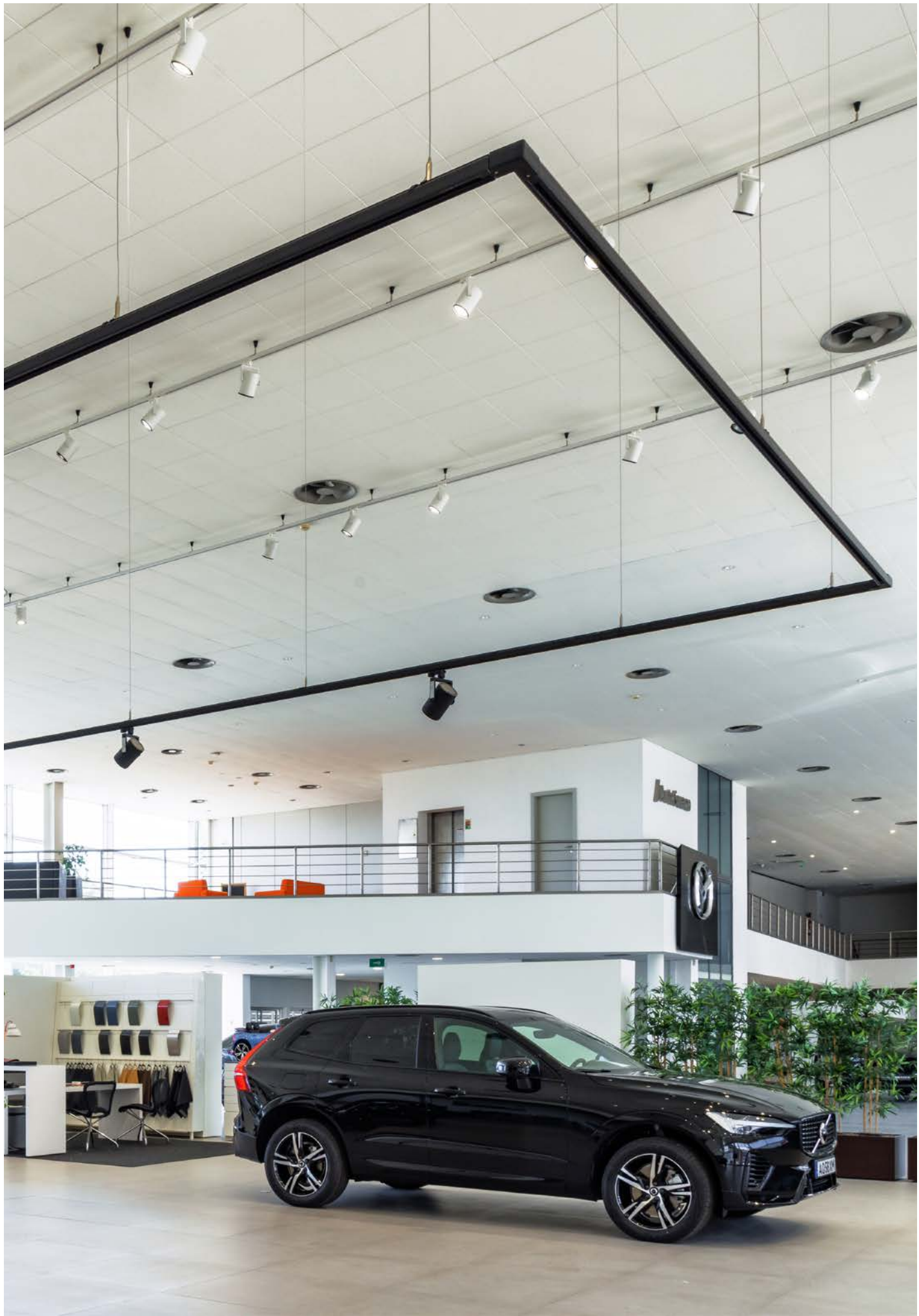


Volvo Showroom

Flexible lighting solutions.

**Solutions implemented
in this project:**
AS425 LED

Auto Sueco Automóveis chose a suspended electric track system by PERFORMANCE IN LIGHTING in its renovated Volvo showroom in Almada. Through indoor AS425 LED spotlights, flexible illumination provides both general lighting for the space and accent lighting to enhance the cars on display. For the highest luminaires and tracks, close to the ceiling, a white finish blends with the architecture, while the central suspended structure features a black finish.



Commercial Building Warmteservice

A sustainable lighting design project for Hanzeweg 4.



Solutions implemented in this project:

OMBRA
TYK+ 20
TYK+ 30
MIMIK 20 CEILING
KREOS
SHIELD+ 1
CRICKET+ 15

Redeveloping the Hanzeweg 4 in Gouda featured a division of the building into six units and involved several companies for a sustainable, energy-efficient commercial building. Responsible for the electrical installation, Dolman Techniek involved PERFORMANCE in LIGHTING for the lighting plan. The solutions chosen for beautifully lighting the facades included OMBRA, TYK+ 20, TYK+ 30 and SHIELD+1, while KREOS was installed on the masts on the side of the property.



Sport



GEWISS Stadium | Bergamo | Italy
European Volley Championship 2023 | Verona | Italy
Paris Olympic Aquatics Centre | Parigi | France
Orobica Climbing | Curno | Italy
Vitalia Sports Centre | Noyal sur Vilaine | France
BMX Olympic Arena | Verona | Italy
Manga Climbing | Milan | Italy
Sporting Club Sassuolo | Sassuolo | Italy
SQY BMX Stadium | Montigny-le-Bretonneux | France
Velodromo Maspes-Vigorelli | Milan | Italy
Albinoleffe Campus | Zanica | Italy
Palasport di Cuneo | Cuneo | Italy
Dame Alice Owen's School Soccer Field | London | UK
Timing Fitness Center | Brescia | Italy
Ierink de Meent | Alkmaar | Netherlands
Tennis Club Moordrecht | Moordrecht | Netherlands

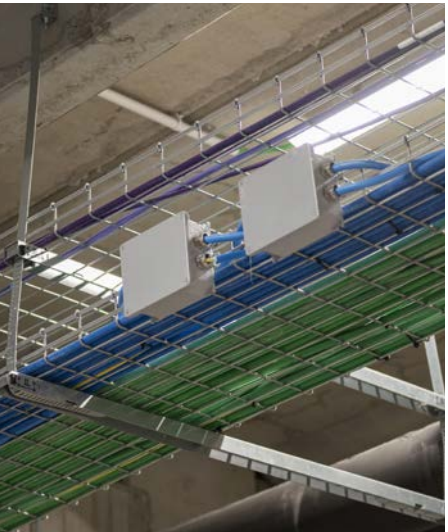
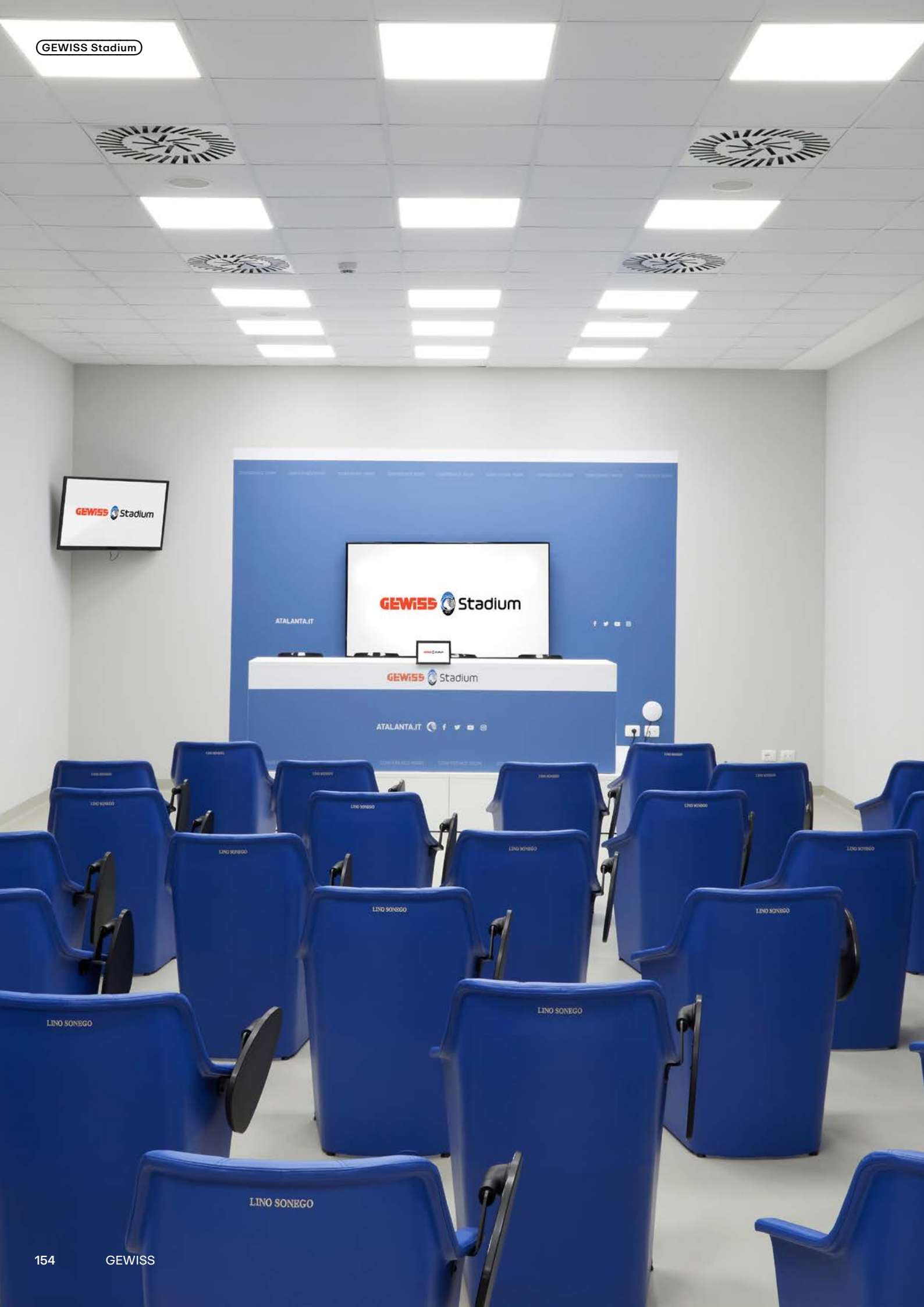
Complete solutions, full management.

Solutions implemented in this project:

SMART [PRO] 2.0
SMART [3]
ELIA PL
68 Q-DIN
CHORUSMART ONE plates
47 CVX 160 I
QDX 630 H

The prestigious GEWISS Stadium showcases a wide range of solutions for maximum performance, safety and versatility: SMART[3] LED watertight luminaires, ELIA PL Led panels, 68 Q-DIN distribution boards, SMART [PRO] 1.0 LED floodlight devices, ONE plates from the CHORUSMART domestic range, CVX 160 I flush-mounting distribution boards and QDX 630 H modular distribution boards. A synergic approach that ensures complete management of the sports facility.







Arena di Verona

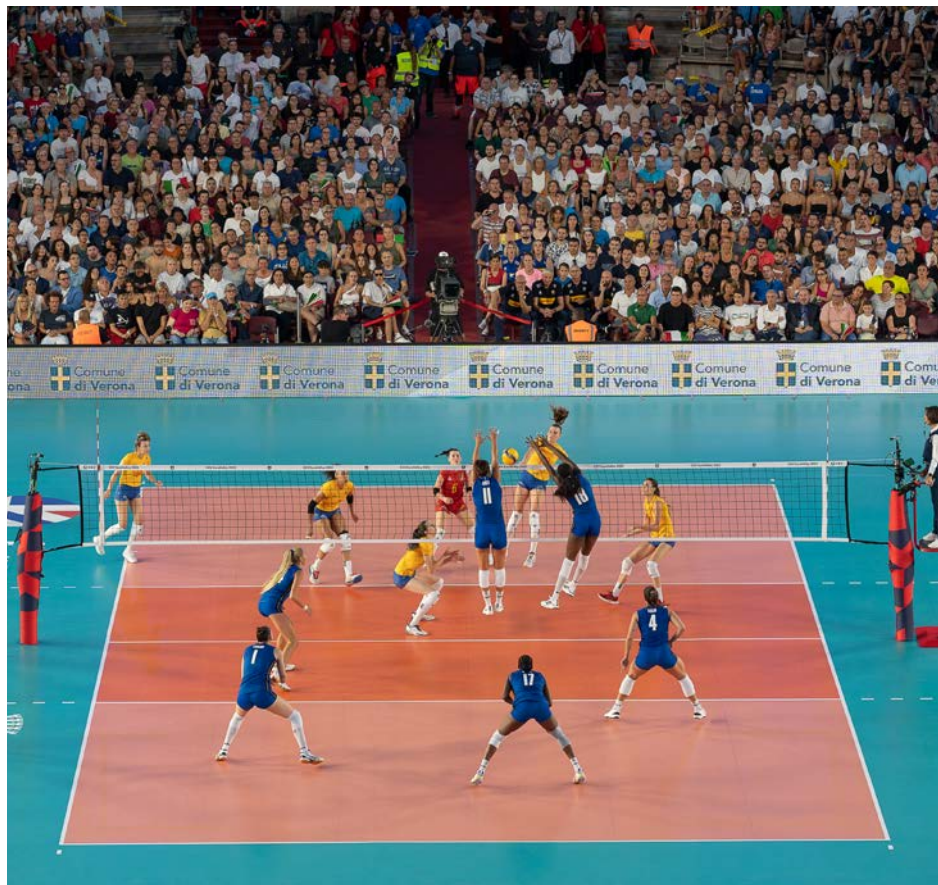
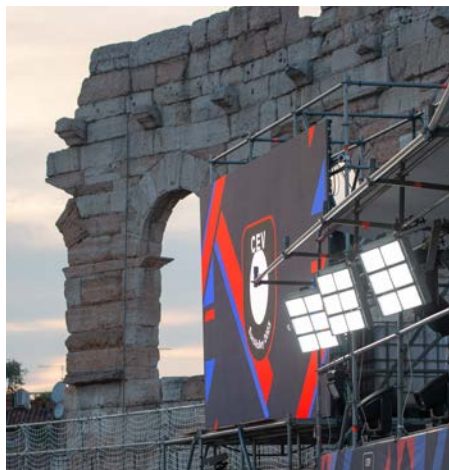
European Volley Championship 2023

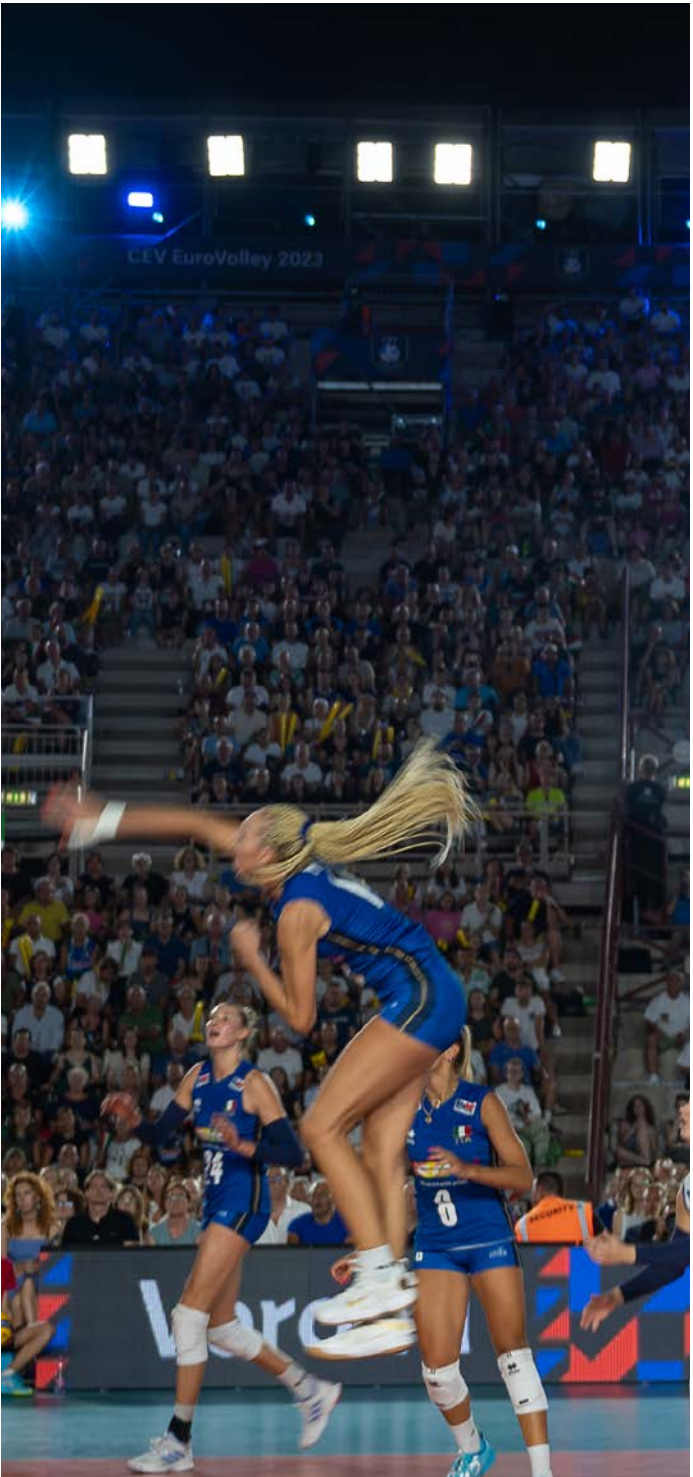
Lighting for Verona Arena.

The Women's European Volleyball Championship opened at the Verona Arena and PERFORMANCE iN LIGHTING illuminated the event. 56 LASER+ 30 floodlights with 10°x25° reflectors along the arena's upper perimeter ensured precise lighting control via DMX protocol for dynamic light choreography. Innovatively, luminaires were leased via Verona's MeQuadro, facilitating swift setup. Precision aiming enhanced player visibility, delighting on-site spectators and TV audience.

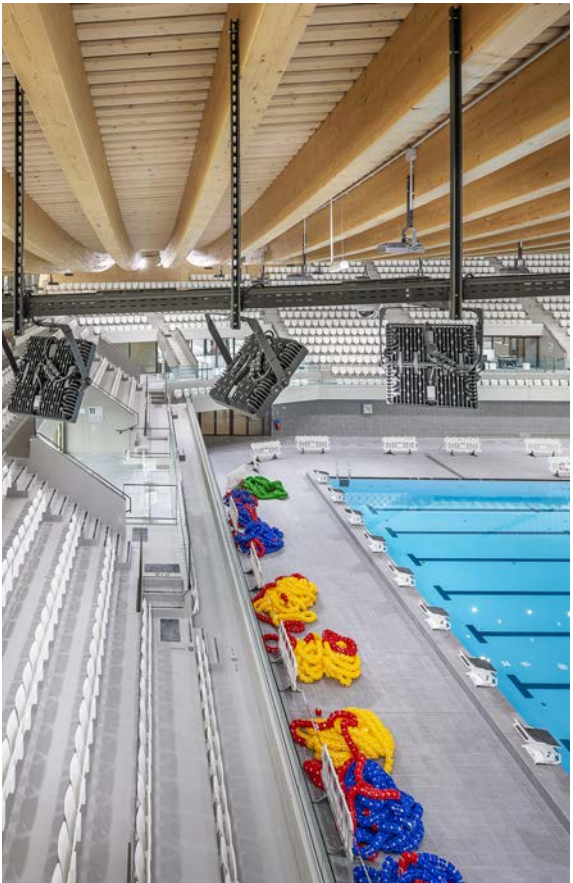
Solutions implemented in this project:
LASER+





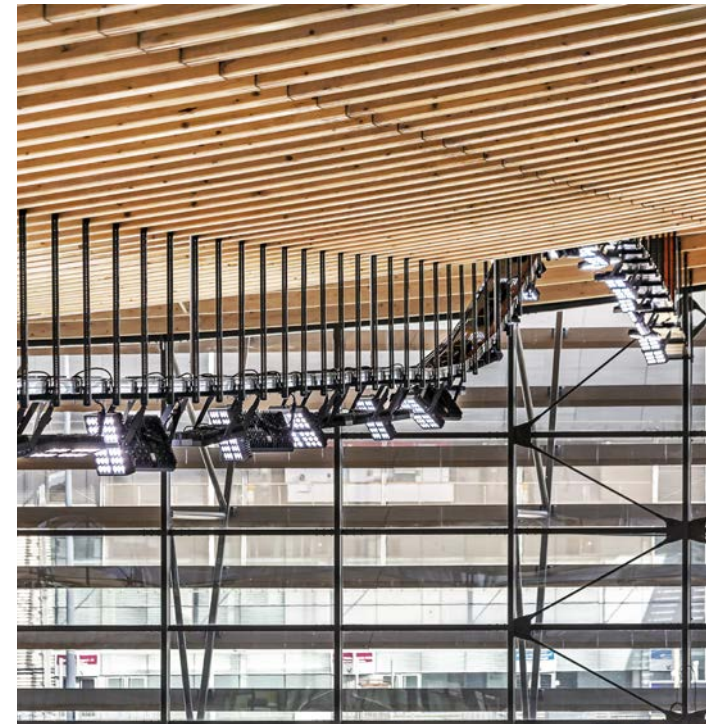
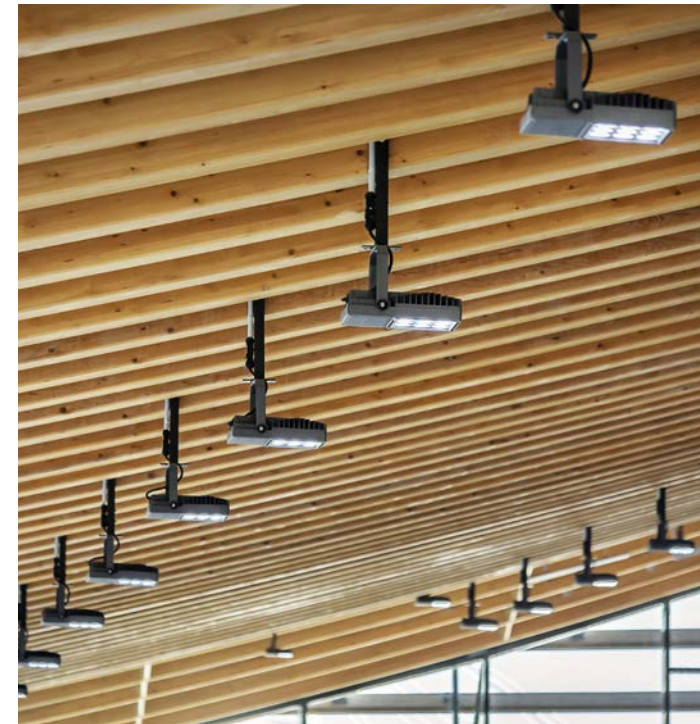
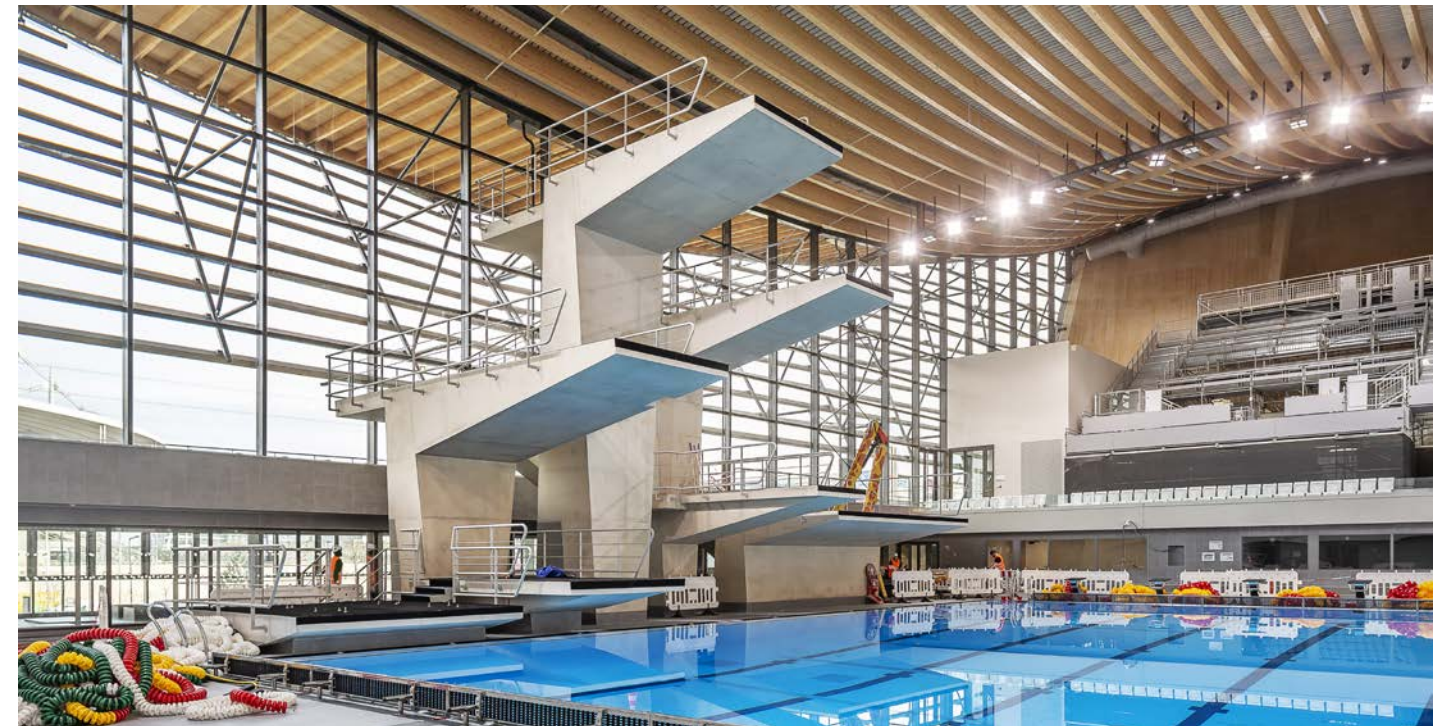


Flexibility and energy efficiency for CAO's sustainability goals.



Solutions implemented in this project:
SMART [PRO] 2.0

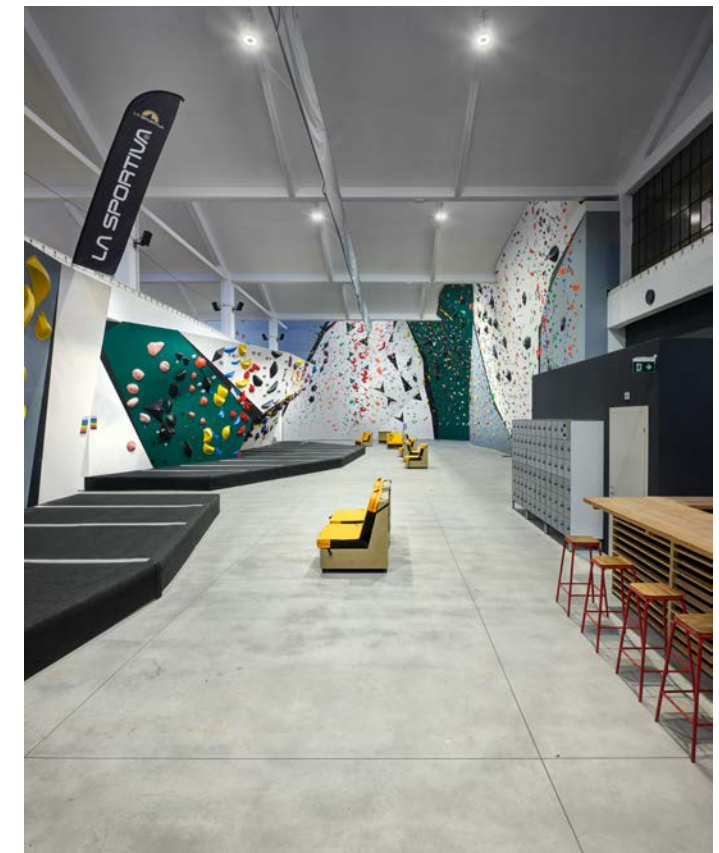
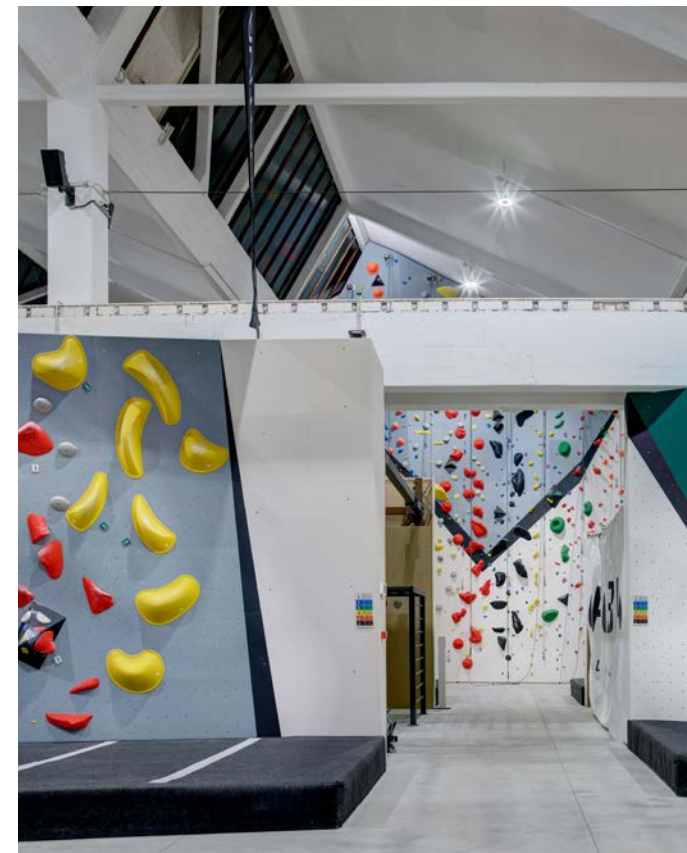
The Paris Olympic Aquatic Centre in Saint-Denis features innovative infrastructures by Bouygues Construction, designed for the 2024 Summer Olympics. GEWISS's SMART [PRO] 2.0 LED floodlights, optimized for sports facilities, illuminate the main 50x25m and secondary 22x25m pools. These lights use CSP LED sources for high performance, flexibility and energy efficiency, aligning with the center's advanced technology and sustainability goals.





Orobia Climbing

A range of complete solutions for Orobia Climbing.



Orobia Climbing, a premier indoor sports center, offers climbing courses for adults, children and groups. GEWISS provided several solutions to the facility: ESALITE, a new addition to their industrial LED lighting range; SMART [3] PLUS LED watertight luminaires; ELIA PL LED recessed panels for office lighting ensuring optimal luminance and glare control; and QDX 630 H Monobloc and modular distribution boards up to 630A - IP55 for efficient power management.

Solutions implemented in this project:
ESALITE HB
SMART [3] PLUS
ELIA PL
QDX 630 H





The Vitalia Sports Center, where GEWISS' range of Smart [4] high-bay LED luminaires is one of the main stars, is well known in the South of France for its top-of-the-range courses and services. The chosen Made in Italy lighting fixtures feature the latest generation LEDs and new optics solutions (reflector optics and PMMA lenses), which warrant excellent lighting performance and a maximized energy efficiency.



Vitalia Sports Centre

Light solutions for the Vitalia Sports Center.

Solutions implemented in this project:
SMART [4]



BMX Olympic Arena

Floodlights in the BMX Olympic Arena.



Solutions implemented in this project:
SMART [PRO] 2.0

The Smart [PRO] 2.0 range lights up the BMX Olympic Arena in Verona, the first facility dedicated to the practice of BMX Racing in Italy and the only one of its kind in central and southern Europe. GEWISS' range of LED floodlights is designed for professional sports plants and large outdoor areas, providing better lighting performance, ensuring simplified installation, reducing maintenance costs and improving energy saving in simple and complex systems.



Manga Climbing

Lighting up the path at Manga Climbing.



Manga Climbing offers courses for climbing enthusiasts of all ages, in addition to various services. The ideal lighting solution for this renowned sports center was the SMART [4] range of fixtures with advanced LEDs and new optics for superior lighting performance and energy efficiency. Available in three sizes and with luminous fluxes up to 36,400 lm, they offer flexibility in installation with options for different color temperatures (3000K, 4000K, 5700K).



Solutions implemented in this project:
SMART [4]



Sporting Club Sassuolo

New light and more for the Sporting Club Sassuolo.



To enhance CONI-recognized Sporting Club Sassuolo's services, GEWISS provided efficient lighting in indoor tennis courts, aligning with FIT federation standards for national events. 88 Elia FL projectors optimized energy consumption and maintenance costs while ensuring fitting lighting and glare control for superior visual comfort. The solutions extend beyond lighting to encompass energy management, safety and operational efficiency across all facility areas.

Solutions implemented in this project:
ELIA FL

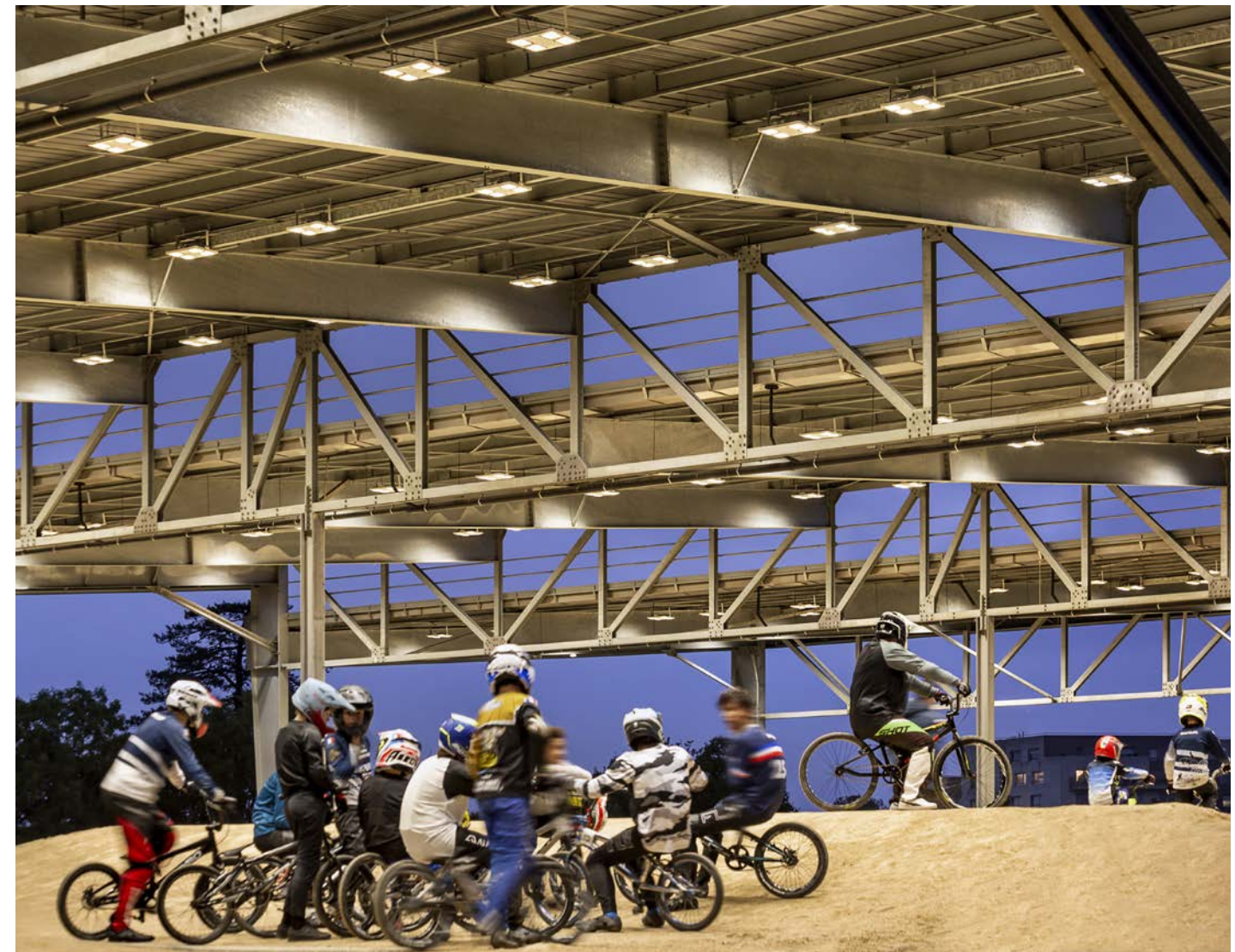
SQY BMX Stadium

Optimal lighting for the BMX Stadium in SQY.

The SQY BMX Stadium is a premier indoor BMX venue in Europe. SMART [4] 4M LED devices, specifically designed for sports facilities, were the solution chosen to ensure optimal lighting: a device constructed from "Halogen-free" nylon and grey glass fiber (RAL7035), incorporating aluminum alloy EN AB 44300 heat sinks and offering High Efficiency (HE), High Lumen Output (HLO), and DALI versions with integrated emergency kits.



**Solutions
implemented in
this project:**
SMART [4]





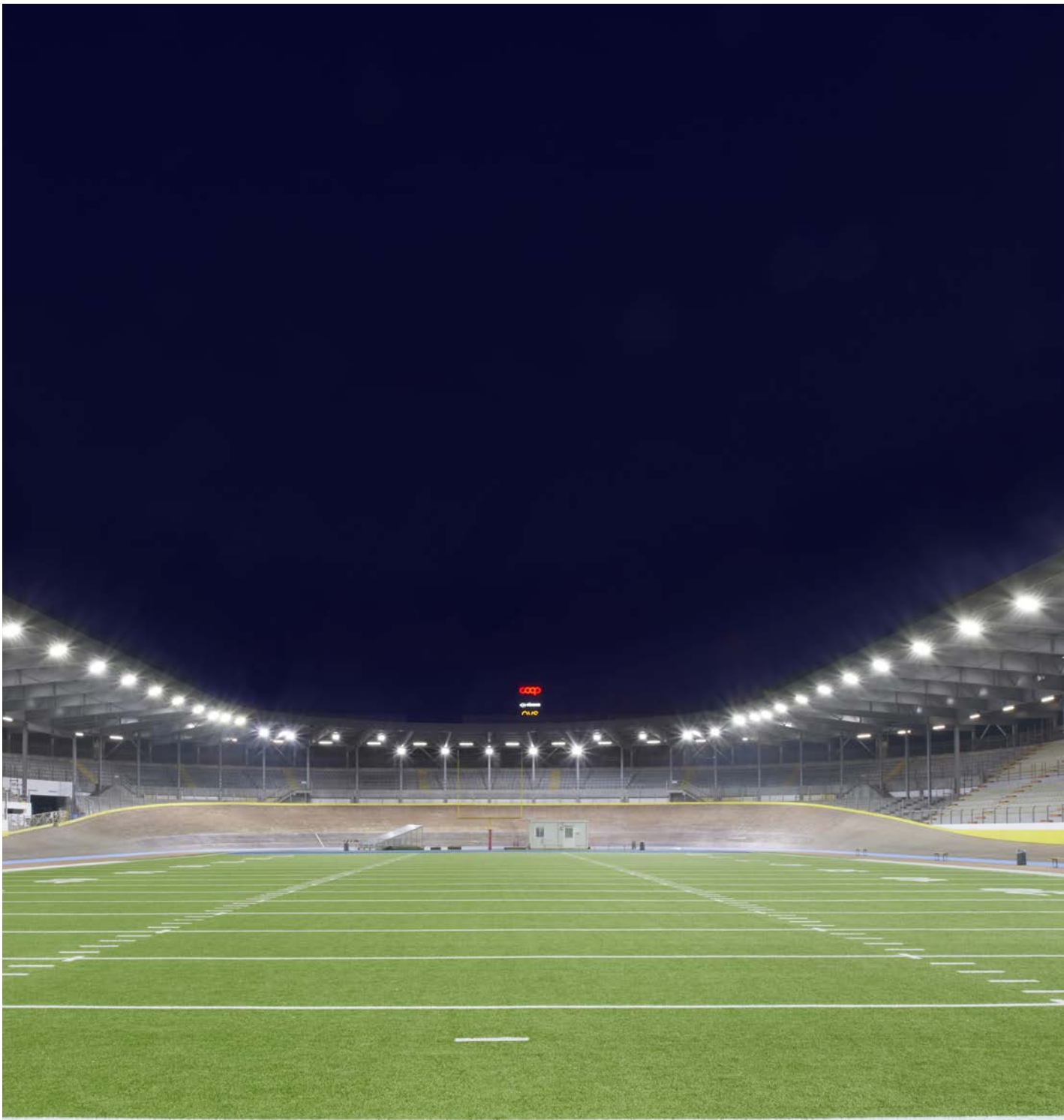
Velodromo Maspes-Vigorelli

Lighting devices for Maspes-Vigorelli Velodrome.

**Solutions implemented
in this project:**
STADIUM PRO
SMART [PRO] 2.0
SMART [3]
SMART [3] PLUS

The Maspes-Vigorelli Velodrome in Milan's CityLife district features a state-of-the-art lighting system designed by Digital Sport Innovation: 142 Smart [PRO] 2.0 luminaires ensure over 700 Lux and high uniformity on the track; 44 DALI-managed Stadium PRO | 3 luminaires provide >600 Lux and uniformity, offering flexible light intensity adjustments for different events. Finally, Smart [3] and Smart [3] Plus luminaires light up stands and ancillary areas.









AlbinoLefte Campus

Complete project for the AlbinoLefte Stadium.

The AlbinoLefte Stadium, the new facility that hosts the matches of the Unione Calcio AlbinoLefte, is illuminated with technology from GEWISS, which also supplied the systems for the structure's low-voltage electrical system. The power distribution panels, solutions for building automation, smart metering and the JOINON unit for charging electric vehicles contribute to the stadium's efficiency and sustainability.

Solutions implemented in this project:

SMART [PRO] 2.0
SMART [3]
QDX 630 L
CHORUSMART ONE plates
CHORUSMART GEO plates
JOINON I-ON
Road [5]





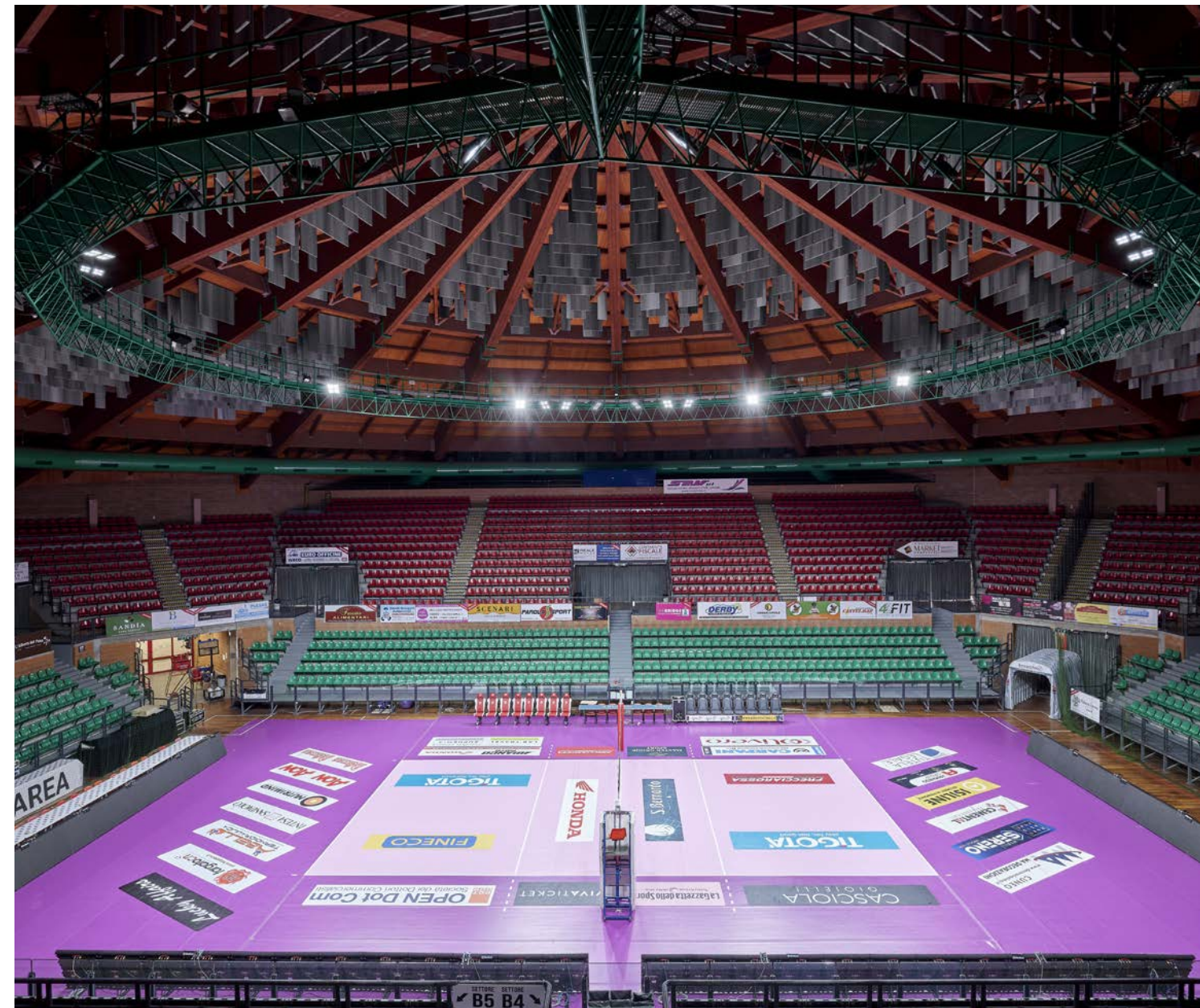
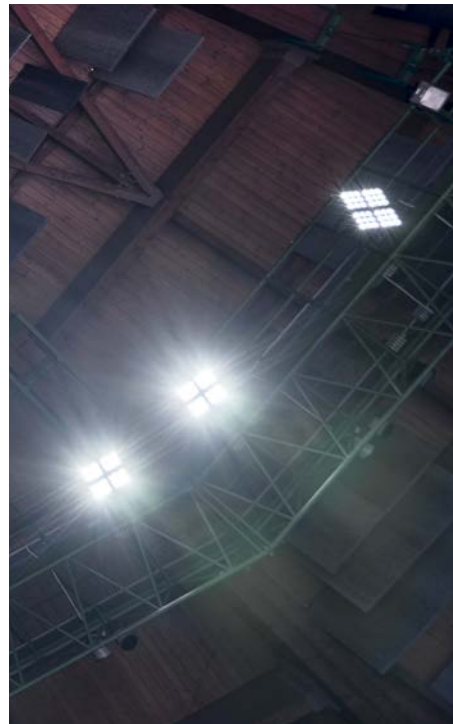
Cuneo Sports Arena

Raising the standards.

The Cuneo Sports Hall features 42 Smart [PRO] LED projectors managed via DMX technology to create impressive light effects and 378 water-resistant Smart [3] luminaires in the changing rooms to ensure a comfortable setting for the athletes. 22 presence sensors optimize energy efficiency and improve security. The project turned the Palazzetto dello Sport into a place of excellence for sports events, raising the standard for this specific segment.



Solutions implemented in this project:
SMART [PRO] 2.0
SMART [3]



Dame Alice Owen's School

State-of-the-art lighting.

With the introduction of the Smart [PRO] 2.0 LED floodlights, we crossed borders to the prestigious Dame Alice Owen's School in England. Here, we employed our state-of-the-art technology to illuminate the school's sports field, fuelling the passion and enthusiasm of the young athletes sustainably. Our commitment is to offer lighting solutions that enhance sports performance, respect the environment, and promote an active and sustainable lifestyle.



Solutions implemented in this project:
SMART [PRO] 2.0



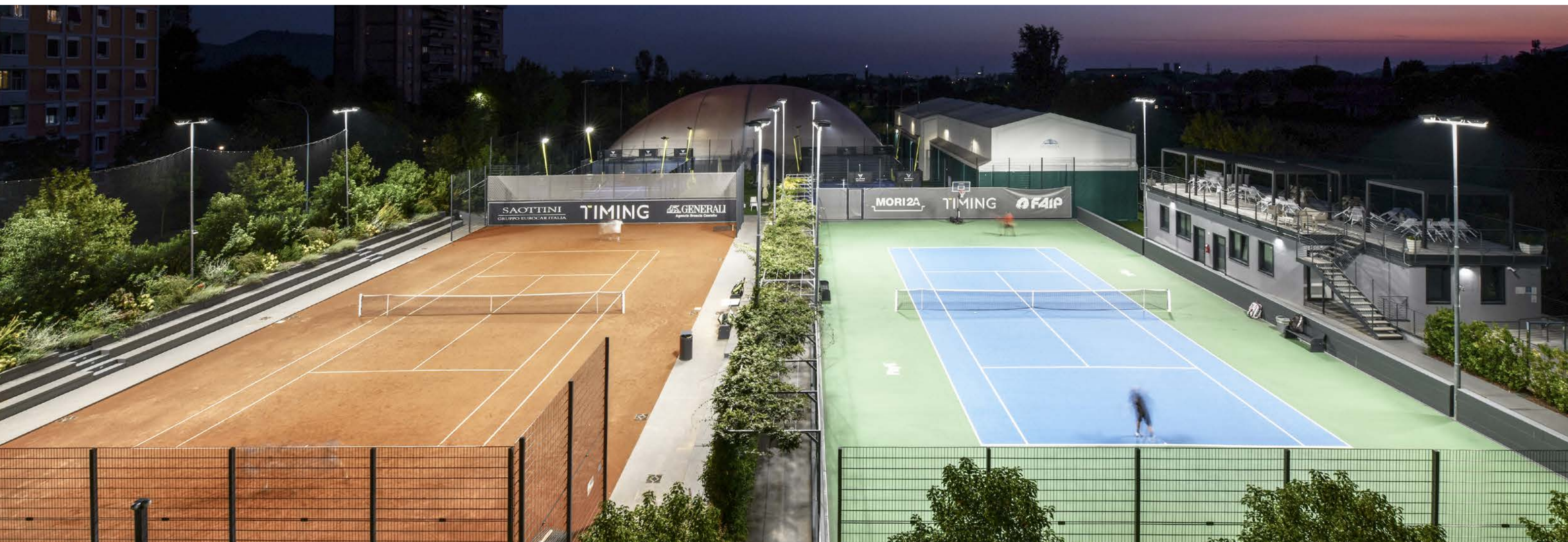
Timing Fitness Center

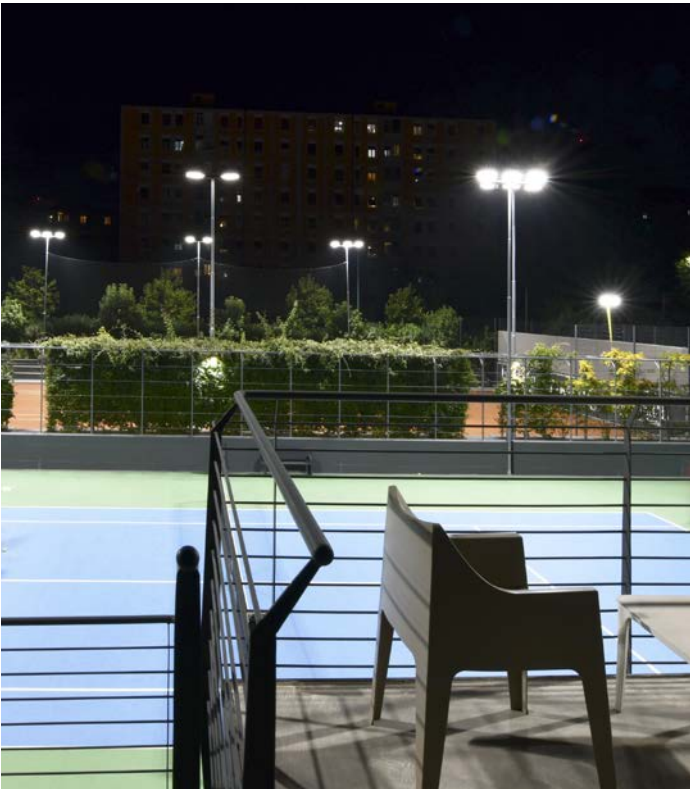
A pleasant lighting experience at Timing Fitness Center.

PERFORMANCE IN LIGHTING's range was pivotal in selecting indoor/outdoor lighting for Brescia's Timing sports center: PLATO recessed panels in the gymnasium, DL SQUARE downlights in transit areas, QUASAR 20 wall luminaires for general lighting, MIMIK 10 CEILING for the veranda. GUELL ZERO, FOCUS+ ZERO projectors highlight landscapes, while MIMIK 10 POST ground poles light up pool areas. SQUARE+ 1 floodlights secure the entrance plaza and car parks effectively.



Solutions implemented in this project:
MIMIK 10 POST
MIMIK 10 CEILING
FOCUS+ ZERO
GUELL ZERO
PLATO 600
DL SQUARE
QUASAR 20
GUELL 4
WIN PRO 30







Icerink de Meent

Lighting design of the 400-meter ice rink.



For the lighting design of the 400-meter ice rink of the Meent, Van der Laan collaborated again with PERFORMANCE iN LIGHTING and chose LED floodlights from the GUELL 3 series. Equipping the fixtures with DALI control allows the track lighting to be set in different recreational, training and competition settings. In addition, the 1000-meter finish line is equipped with additional lighting for assessing the photo finish.

**Solutions implemented
in this project:**
GUELL 3



Lighting calculations for Tennis Club Moordrecht.



The prestigious Tennis Club Moordrecht was founded in 1970 and has approximately 300 members. The park has six illuminated red clay courts, and Dasto Elektro asked PERFORMANCE iN LIGHTING to draw up the lighting calculation. The traditional luminaires had to be replaced by LED luminaires: the use of GUELL 4 fixtures ensures uniform lighting on the courts that meets all the requirements of the KNLTB regulations.

**Solutions implemented
in this project:**
GUELL 4



Transportation



DP World Container Terminal | Constanta | Romania
Dubai Airport Freezone | Dubai | UAE

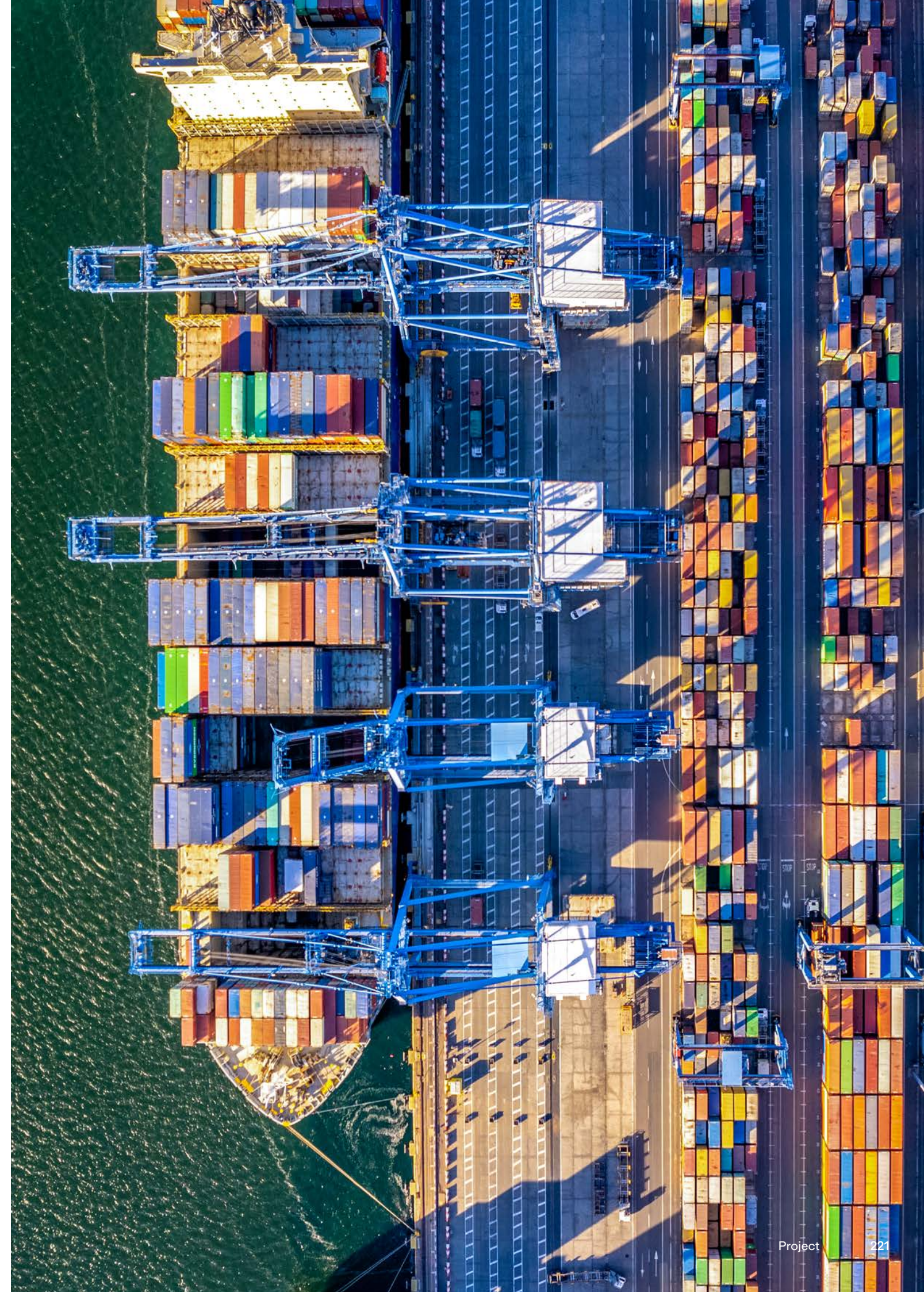
DP World Container Terminal

An advanced lighting plan for a logistic leader.

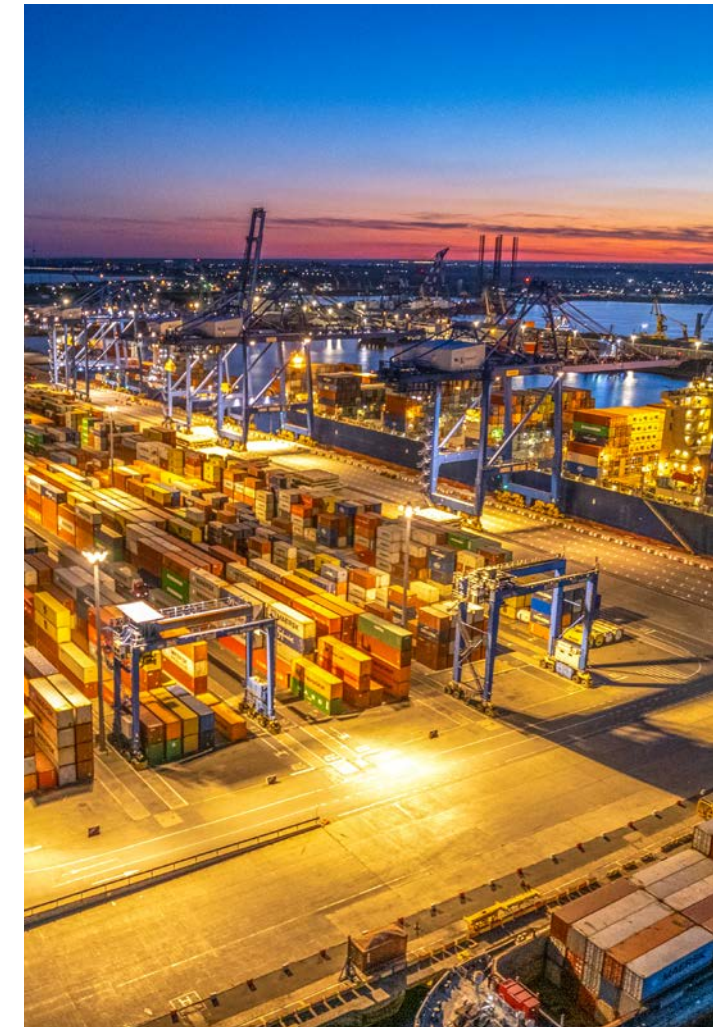
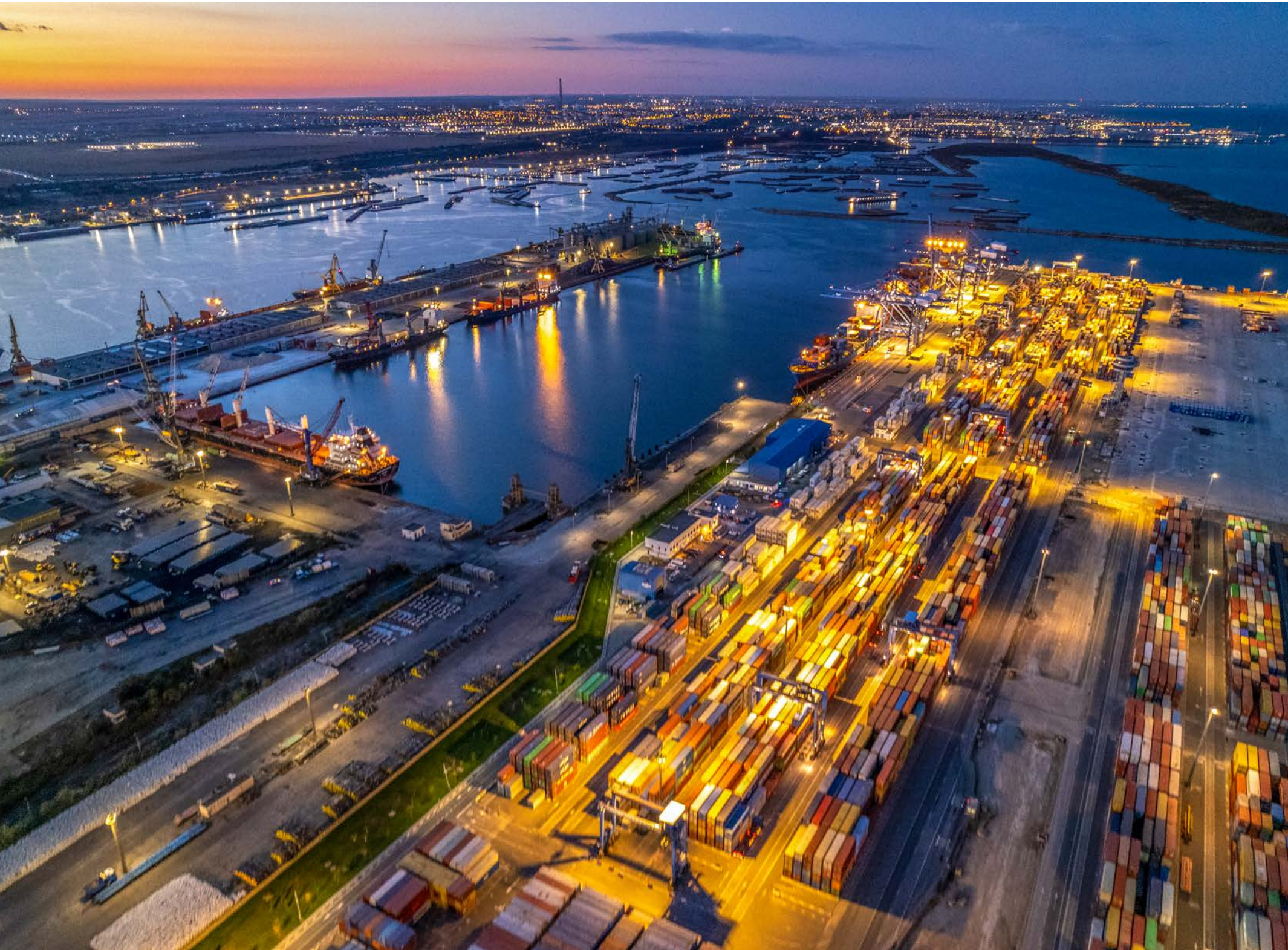


**Solutions implemented
in this project:**
SMART [PRO] 2.0

A leading brand in global logistics, DP World Constanta South Container Terminal provides importers & exporters in Central Europe with speedier and more cost-effective access to the Far East market. To light up the vast outdoor spaces of this immense facility, SMART [PRO] 2.0 3X2M range of high-power outdoor and indoor LED projectors designed for large areas proved to be the most effective solution.







Dubai Airport Freezone

In lighting, elegance meets performance.

The prestigious Dubai Airport Freezone selected GEWISS to supply light fittings for its new multi-story parking facility. The range of LED watertight luminaires Smart [3] is ideal even in installation contexts of less than 4 meters of height: entirely designed, developed and produced in Italy, they feature an elegant design highlighting the new LED technology's features, highly reduced energy consumption, high impact resistance and quick, easy installation.

Solutions implemented in this project:
SMART [3]



About Gewiss

Our innovation journey

We have a great passion: innovation. A vocation that translates into a continuous passion for change, **a predisposition to excellence** that requires creativity, competence, enterprise, and enthusiasm: qualities that are part of our history and have allowed us to grow by demonstrating the ability to **"look beyond."**

Vision

To be a reference company in the sector by promoting **meaningful innovations for society.**

Mission

Create value for our customers and our team by offering innovative and scalable solutions for buildings, industries, and infrastructures that connect people and things and improve safety and quality of life, guided by the values of **integrity, culture of excellence, and sustainability.**



Sustainability

We operate to reduce waste and manage human, natural, and financial resources efficiently. We aim to create value for our people, our clients, the communities, and future generations.



Excellence

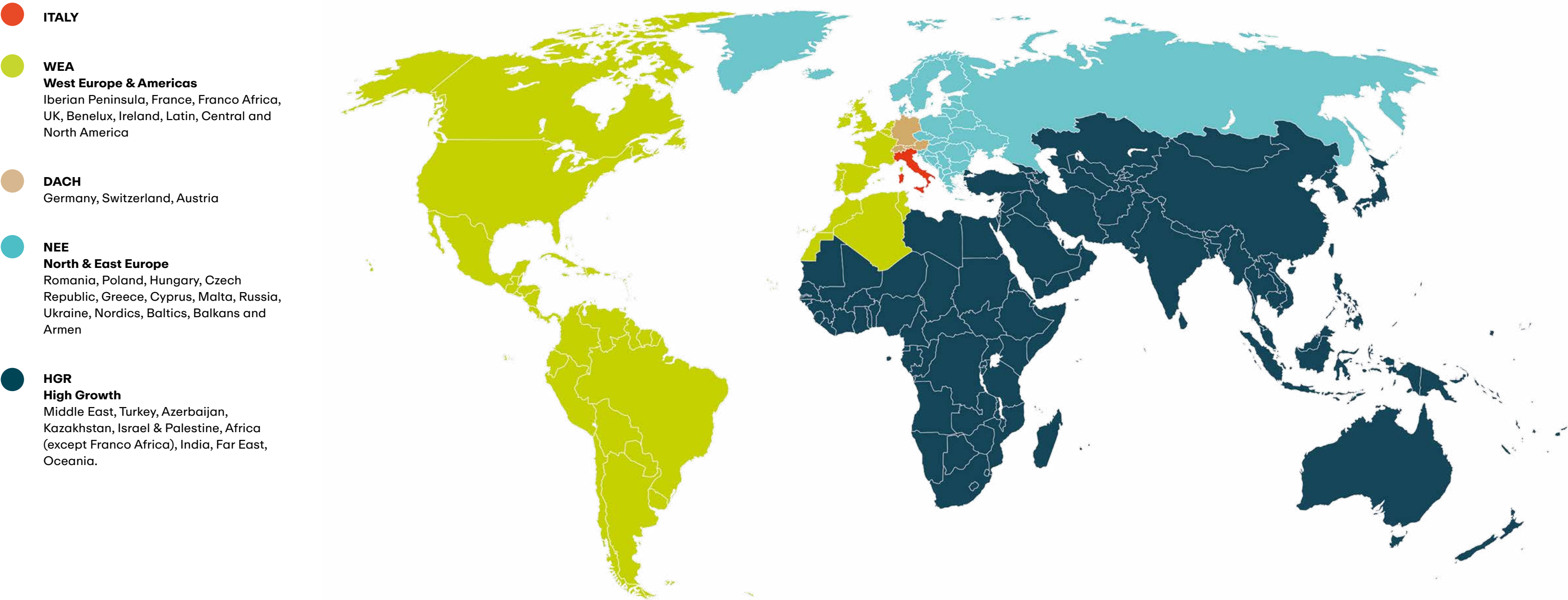
Our culture of excellence is driven by the constant push to improve and achieve challenging goals, creating something better every day than the day before, exploring innovative solutions, and maximizing our potential.



Integrity

Integrity is the foundation on which employees, clients, and all stakeholders build relationships of trust. Integrity means being responsible, reliable, and guided by strong ethical principles.

The World is Our Home



Our Journey for Sustainable Development



GEWISS's approach to sustainability demonstrates strong coherence and synergy with the Company's Mission.

Our goal in daily activities is to create shared value for all stakeholders and throughout the entire value chain in all the territories where we operate, **pursuing sustainable development and promoting innovations** that concretely improve daily life. For this reason, we have chosen **to develop a responsible business** model that promotes respectful behavior towards people and the environment.

This philosophy took shape and was expressed in the **first unified Group Sustainability Report** with tangible results, some of which are expressed on the opposite page (data refer to 2023 compared to the previous year).

Environment

-14%	energy consumption
-31%	natural gas consumption
-16%	CO ₂ emissions
-2.5%	waste produced
97%	production of non hazardous waste

Social

+43K	hours of training
2.235	employees
97%	permanent contracts

Governance

ISO 27001	Information Security Management System within information services
UNI PdR 125:2022	Gender Equality Management System in Organizations

Solutions that Generate Value

Innovation is not just a goal; it is our way of addressing the challenges of our customers.
At GEWISS, we believe that every solution should serve a greater purpose: to help people realize their projects and unlock their potential. Every initiative is designed to generate real value, improving daily life, reducing costs, and respecting our planet.

An unwavering commitment

Our commitment is simple but substantial:

- Generate meaningful value. Our solutions and services are designed with a clear goal in mind: to meet the unique needs of our customers, enriching their experience.
- Invest in the future. Our investments in research and development, staff training, and improving production facilities have allowed us to become a reference point in the fields of home & building automation, energy protection and distribution, e-mobility, and smart lighting.

Sustainable Growth

Over our 55 years of history, we have continuously expanded our expertise, integrating new companies such as PERFORMANCE IN LIGHTING, a historical player in the international lighting sector. This integration has enriched our know-how and portfolio, enabling us to offer complete lighting solutions for both indoor and outdoor applications.

Collaboration for Change

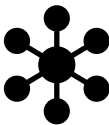
Every project we present is the result of a genuine synergy between aesthetic design and technical performance. They represent tangible examples of how our different divisions collaborate to address market challenges, pursue innovation, and support our customers in achieving their goals.
In everything we do, we remain true to our mission: to solve our customers' challenges and support them in realizing their potential, while respecting our planet and future generations.



Installation



Energy



Building



Lighting



Mobility



GEWISS S.p.A.

Registered Office: Via Domenico Bosatelli, 1
24069 Cenate sotto (BG), Italy
T +39 035 946 111
E gewiss@gewiss.com
www.gewiss.com

PERFORMANCE IN LIGHTING S.p.A.

Viale del Lavoro 9/11
37030 Colognola ai Colli (VR) - Italy
T +39 045 61 59 211
www.performanceinlighting.com

Single shareholder company - Bergamo Business Register/VAT/Tax Code (IT) 00385040167
Economic and Administrative Index 107496 - Share Capital 60,000,000.00 EUR fully paid up

