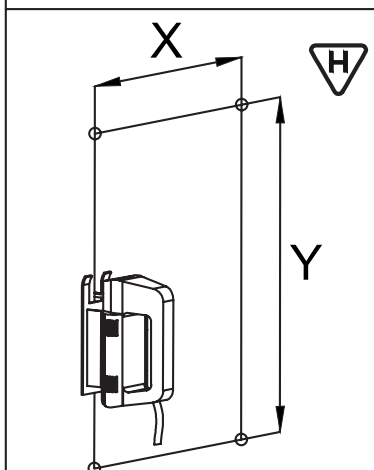
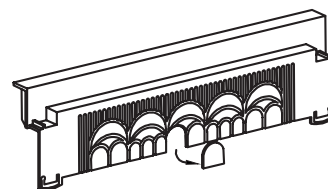
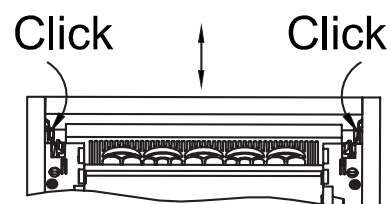
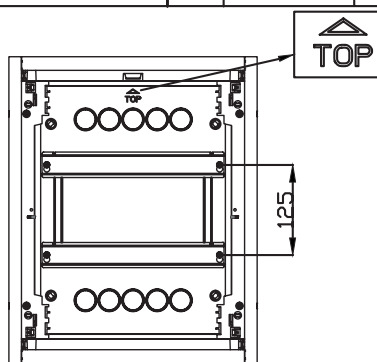
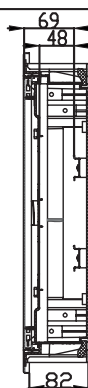


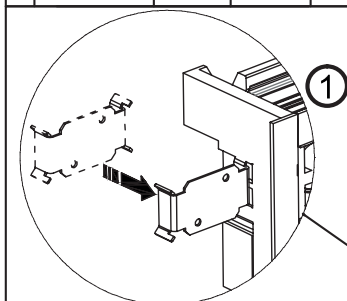
CODE	A [mm]	B [mm]	Pde [W]	T [°C]
GW40161N	343	314	60	(-15)-(60)
GW40162N	443	414	80	(-15)-(60)
GW40163N	568	539	90	(-15)-(60)
GW40164N	753	724	100	(-15)-(60)
GW40165N	878	849	120	(-15)-(60)



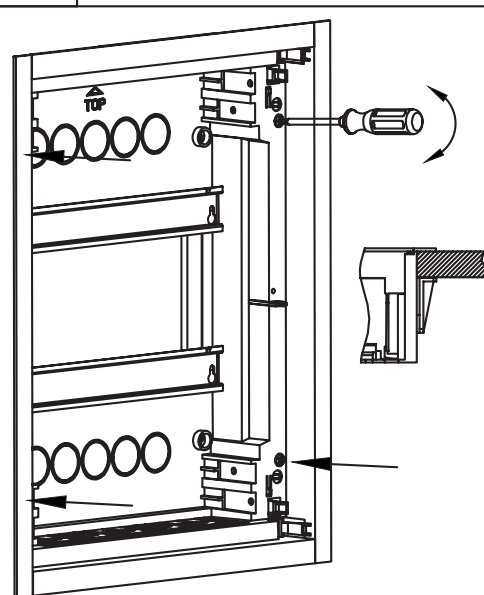
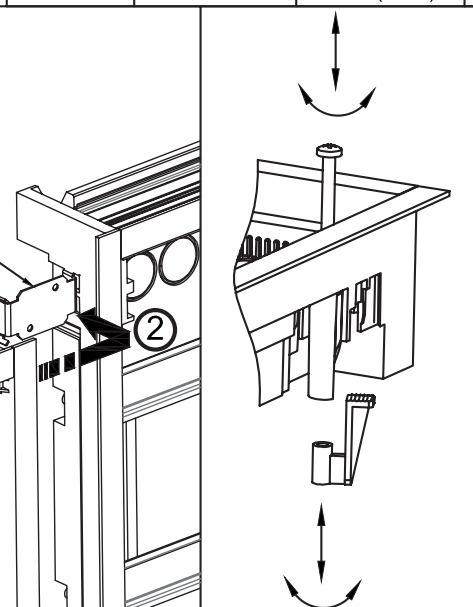
CODE	X [mm]	Y [mm]
GW40161N	314	314
GW40162N	314	414
GW40163N	314	539
GW40164N	314	724
GW40165N	314	849

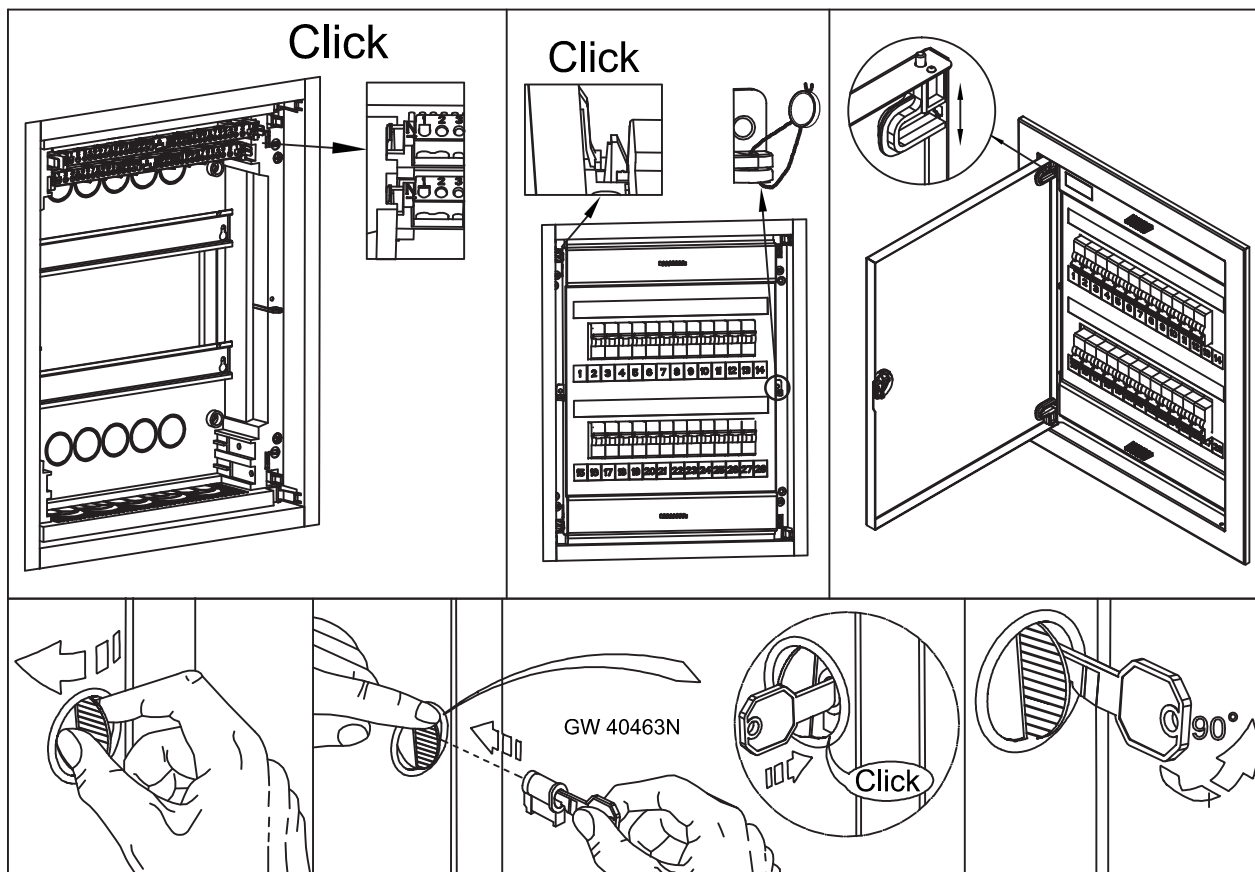


CODE	EN50022 18mm
GW40161N	12+2
GW40162N	24+4(12x2)
GW40163N	36+6(12x3)
GW40164N	48+8(12x4)
GW40165N	60+10(12x5)

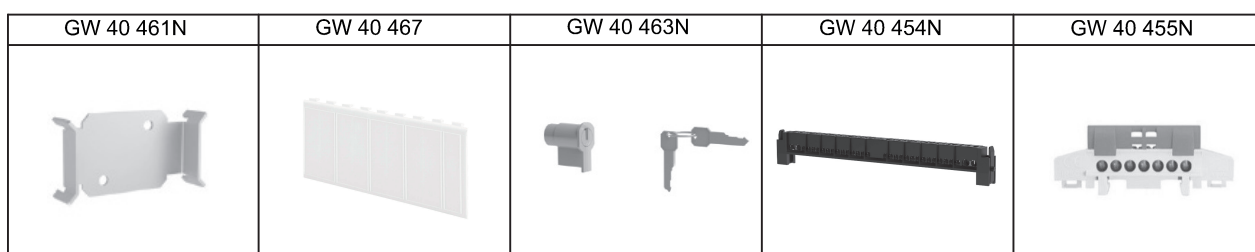


GW 40461N



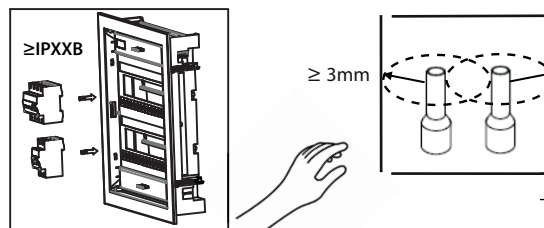


		N	⏏	N	⏏
	GW 40 161N	(2x16)+(8x10)	(2x16)+(8x10)	(2x10)+(8x6)	(2x10)+(8x6)
	GW 40 162N	(2x16)+(14x10)	(2x16)+(14x10)	(2x10)+(14x6)	(2x10)+(14x6)
	GW 40 163N	2x[(2x16)+(14x10)]	2x[(2x16)+(14x10)]	2x[(2x10)+(14x6)]	2x[(2x10)+(14x6)]
	GW 40 164N	2x[(2x16)+(14x10)]	2x[(2x16)+(14x10)]	2x[(2x10)+(14x6)]	2x[(2x10)+(14x6)]
GW 40 165N	2x[(2x16)+(14x10)]	2x[(2x16)+(14x10)]	2x[(2x10)+(14x6)]	2x[(2x10)+(14x6)]	



IEC 60670-24 GP	Un	Ui	In
	400V	1000V	63A

IEC 60670-24 PD	Un	Ui	In	IK
	400V	1000V	63A	07



Ai sensi delle Decisioni e delle Direttive Europee applicabili, si informa che il responsabile dell'immissione del prodotto sul mercato Comunitario è:
 According to the applicable Decisions and European Directives, the responsible for placing the apparatus on the Community market is:
GEWISS S.p.A. Via A.Volta, 1 IT-24069 Cenate Sotto (BG) Italy Tel: +39 035 946 111 Fax: +39 035 946 270 E-mail: qualitymarks@gewiss.com



+39 035 946 111
 8.30 - 12.30 / 14.00 - 18.00
 lunedì - venerdì - monday - friday



+39 035 946 260



sat@gewiss.com
www.gewiss.com