

Installation

Technical characteristics





44 CE APTA

Surface-mounting junction boxes

GEWISS

44 CE APTA

Surface-mounting junction boxes, for ordinary applications

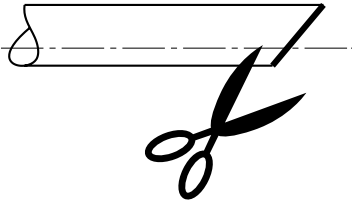
TECHNICAL CHARACTERISTICS	
Standard: IEC 60670-1; IEC 60670-22	Material: PP+GF case, TPE membrane, PA+GF bracket
Degree of protection: IP66 (membrane), IP67 (cable glands)	Halogen Free: yes (according to EN IEC 63355)
Protection against indirect contact: double insulation -  (•)	UV Resistant: yes (according to IEC 60670-22)
Installation temperature: max. +60°C; min. -25°C 	Resistance to abnormal heat and fire: GWT 750°C case, GWT 650°C membrane
	Fixing bracket: included

(•) Complete insulation, in accordance with EN 61140 Standard, obtainable with GW 44 622 screwcaps or installation with supplied fixing bracket in insulating material.

Insertion of cables

For the correct insertion of electrical cables through the membrane of 44 CE APTA junction boxes, follow these steps:

- Cut the cable diagonally on the side intended for insertion into the membrane (see illustration).



- Pierce the center of the membrane using a suitable tool (e.g., screwdriver), making a hole with a diameter smaller than the external diameter of the cable sheath.
- Insert the cable through the hole until it is properly positioned inside the junction box.

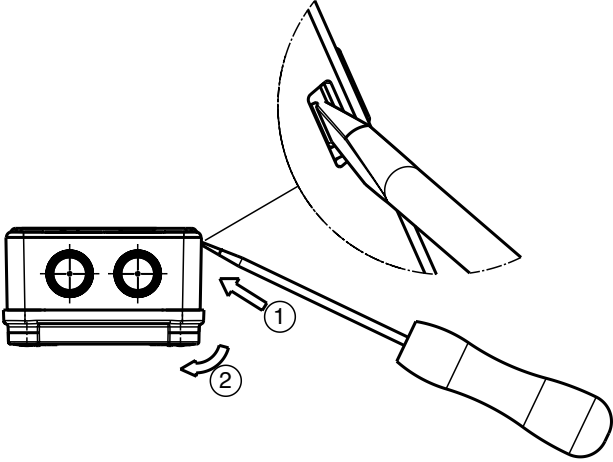
Connecting devices and conductors (EN 60670-22)

CONDUCTOR CROSS-SECTION AREA (mm²)					
Box size		1,5	2,5	4	6
2K	Number of connecting devices	5	5	3	-
	Number of conductors	15	15	9	-
3K	Number of connecting devices	8	6	5	4
	Number of conductors	24	18	15	12
4	Number of connecting devices	10	8	6	5
	Number of conductors	30	24	20	15

Release the junction box from the mounting bracket

To release the junction box from the mounting bracket when it is installed on the wall, it is necessary to:

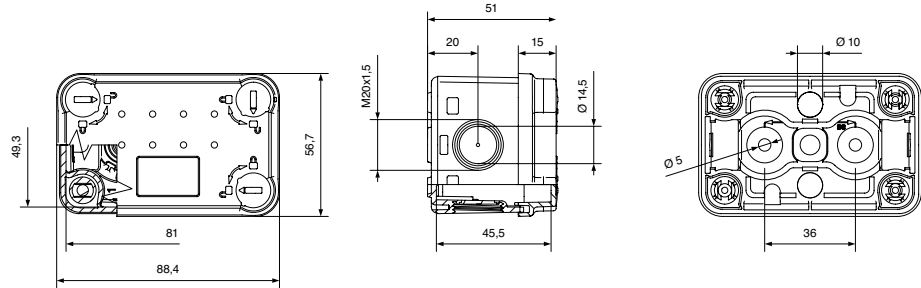
- Position a screwdriver at an angle on the bracket's locking tab (as shown in the illustration) and press gently.
- Pull the junction box towards you until it is completely disengaged from the bracket.



Dimension tables

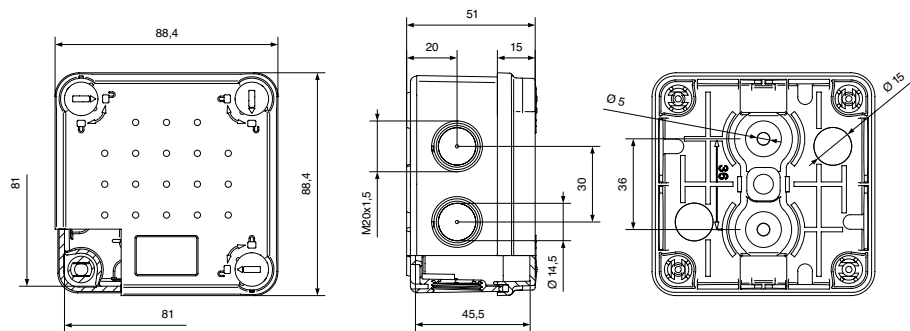
44 CE APTA - SIZE 2K

Code
GW 44 902 KBK
GW 44 902 KK
GW 44 902 KWK



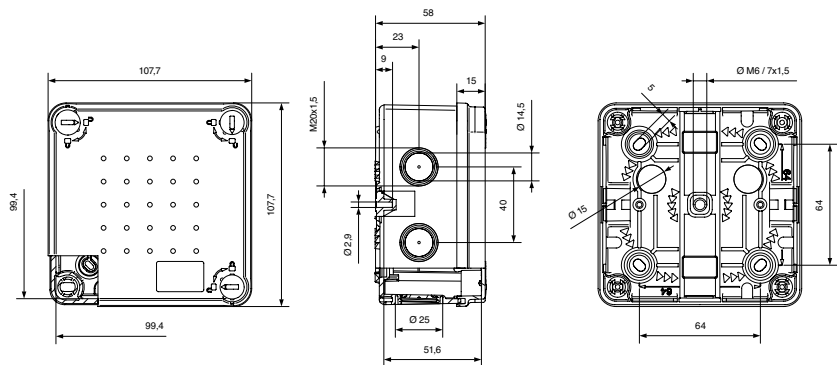
44 CE APTA - SIZE 3K

Code
GW 44 903 KBK
GW 44 903 KK
GW 44 903 KWK



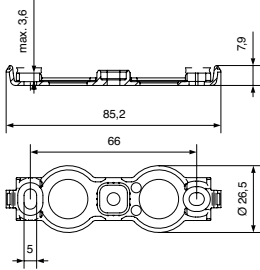
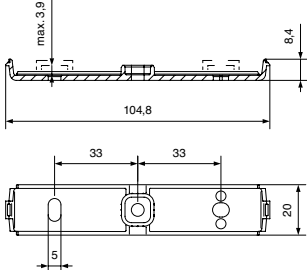
44 CE APTA - SIZE 4

Code
GW 44 904 NBK
GW 44 904 NK
GW 44 904 NWK



44 CE APTA

Dimension tables

FIXING BRACKETS (INCLUDED)	
	
SIZE 2K and 3K	
	
SIZE 4	

GEWISS S.p.A.

Registered Office: Via Domenico Bosatelli, 1
24069 Cenate Sotto (BG), Italy

T +39 035 946 111

E gewiss@gewiss.com

www.gewiss.com

Bergamo Business Register / VAT / Tax Code (IT) 00385040167

Economic and Administrative Index 107496 - Share Capital 60,010,000.00 EUR fully paid up

Company subject to the management and coordination of Polifin S.p.A.

