

### 40 CDE - Flush-mounting enclosures - Spanish standard

#### TECHNICAL CHARACTERISTICS

Standard: IEC 60670-1; IEC 60670-24

Degree of protection: IP40

Protection against indirect contact: double insulation - □ (•)

Installation temperature: max. +60°C; min. -15°C

Material: technopolymer GW PLAST

Impact resistance: IK 07

Heat resistance: thermo-pressure with ball 70°C

Resistance to abnormal heat and fire: Glow wire test 650°C

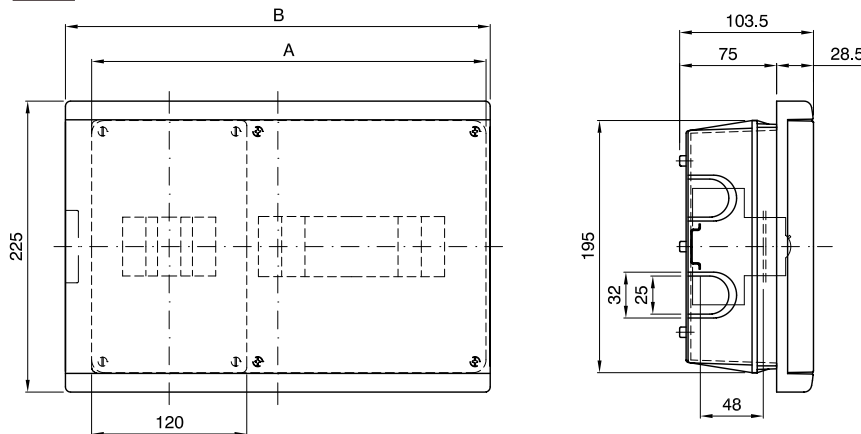
(•) Complete double insulation, in accordance with EN 61140 Standard.

#### BEHAVIOUR WITH CHEMICAL AND ATMOSPHERIC AGENTS

Saline solution	Acids		Bases		Solvents				Mineral oil	UV rays
	Concentrated	Diluted	Concentrated	Diluted	Hexane	Benzol	Acetone	Ethyl alcohol		
Resistant	Not resistant	Limited resistance	Limited resistance	Not resistant	Limited resistance	Not resistant	Not resistant	Limited resistance	Limited resistance	Resistant

### Dimension tables

#### SURFACE-MOUNTING ENCLOSURES WITHOUT DOOR - IP40



	Code	Dimensions	
		A	B
4+8M	<b>GW 40 336</b>	305	328.5
4+12M	<b>GW 40 337</b>	372	400

## ENCLOSURES AND DISTRIBUTION BOARDS FOR SPECIFIC STANDARDS

### 40 CDE - Surface-mounting enclosures and boards - German standard

#### TECHNICAL CHARACTERISTICS

Standard: IEC 60670-1; IEC60670-24; DIN VDE 0603-1

Degree of protection: IP65

Protection against indirect contact: double insulation - □ (•)

Installation temperature: max. +60°C; min. -25°C

Material: technopolymer GW PLAST

Impact resistance: IK 07

Heat resistance: thermo-pressure with ball 70°C

Resistance to abnormal heat and fire: Glow wire test 750°C

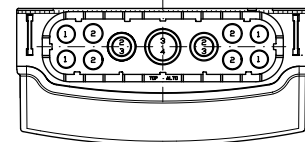
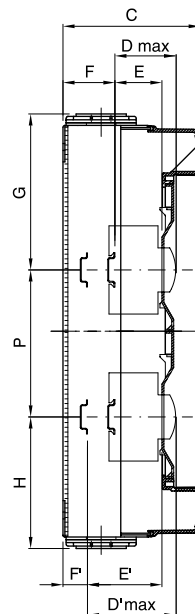
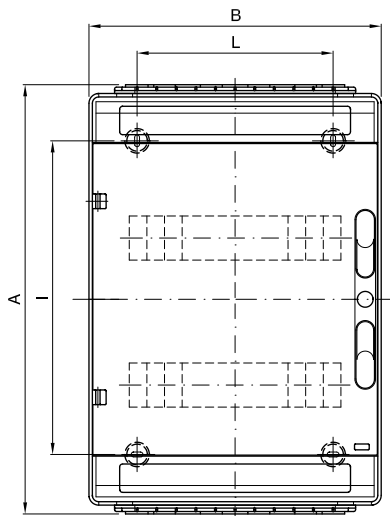
(•) Complete double insulation, in accordance with EN 61140 Standard, obtainable with screwcaps (GW 44 622 or GW 44 623) or resin fixing brackets (GW 44 621).

#### BEHAVIOUR WITH CHEMICAL AND ATMOSPHERIC AGENTS

Saline solution	Acids		Bases		Solvents				Mineral oil	UV rays
	Concentrated	Diluted	Concentrated	Diluted	Hexane	Benzol	Acetone	Ethyl alcohol		
Resistant	Not resistant	Limited resistance	Limited resistance	Not resistant	Limited resistance	Not resistant	Not resistant	Limited resistance	Limited resistance	Resistant

### Dimension tables

#### ENCLOSURES WITH SMOKED TRANSPARENT DOOR - IP65



Diameter of flange ducts			
1	2	3	4
M16	M20	M25	M32

	Code	Dimensions			Modular assembly									Fixing		
		A	B	C	B	E	F	G	H	D	D'max	E'	F'	NR	I	L
12M	GW 40 113 GW 40 123	278						126.5	151.5	/					161	
24M	GW 40 114 GW 40 124	438	298	140	75	48	48	156.5	131.5	150	102	75	21	4	320	200
36M	GW 40 115 GW 40 125	588						156.5	131.5	150					494	

### 40 CDE - Flush-mounting enclosures - German standard

#### TECHNICAL CHARACTERISTICS

Standard: EN 60670-1 (DIN VDE 0606-1); EN 60670-24 (DIN VDE 0606-24) (\*) DIN VDE 0603-1; DIN 43871

Protection rating: IP40 distribution board, IP30 multimedia enclosure

Protection against indirect contact: double insulation - (\*)

Installation temperature: max. +60°C; min. -15°C

Material: technopolymer, metal

Impact resistance: IK 07

Heat resistance: thermo-pressure with ball 70°C

Back box for brickwall: GWT 650°C

Back box for plasterboard: GWT 850°C

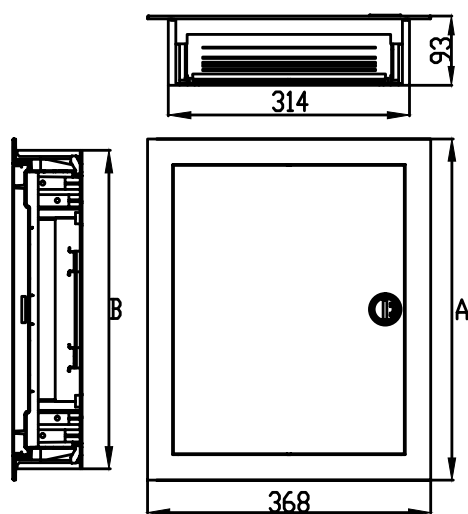
(\*) Complete double insulation, in accordance with EN 61140 Standard.

#### BEHAVIOUR WITH CHEMICAL AND ATMOSPHERIC AGENTS

Saline solution	Acids		Bases		Solvents				Mineral oil	UV rays
	Concentrated	Diluted	Concentrated	Diluted	Hexane	Benzol	Acetone	Ethyl alcohol		
Resistant	Not resistant	Limited resistance	Limited resistance	Not resistant	Limited resistance	Not resistant	Not resistant	Limited resistance	Limited resistance	Resistant

### Dimension tables

#### CENTRALINI PER PARETI IN MURATURA O CARTONGESSO - PORTA CIECA E CORNICE IN METALLO



Tipologia	Moduli	Codice	A	B
Distribuzione	12+2	GW40151N GW40161N	343	314
	24+4 (12x2)	GW40152N GW40162N	443	414
	36+6 (12x3)	GW40153N GW40163N	568	539
	48+8 (12x4)	GW40154N GW40164N	753	724
	60+10 (12x5)	GW40155N GW40165N	878	849
Multimedia	3 file	GW40173N GW40178N	568	539
	4 file	GW40174N GW40179N	753	724

### 40 CDE - Modular surface-mounting enclosures - French standard

#### TECHNICAL CHARACTERISTICS

Standard: IEC 60670-1; IEC 60670-24; NF C 61-910

Degree of protection: IP30/40

Protection against indirect contact: double insulation - □ (•)

Installation temperature: max. +60°C; min. -25°C

Material: technopolymer GW PLAST

Impact resistance: IK 07

Heat resistance: thermo-pressure with ball 70°C

Resistance to abnormal heat and fire: Glow wire test 750°C

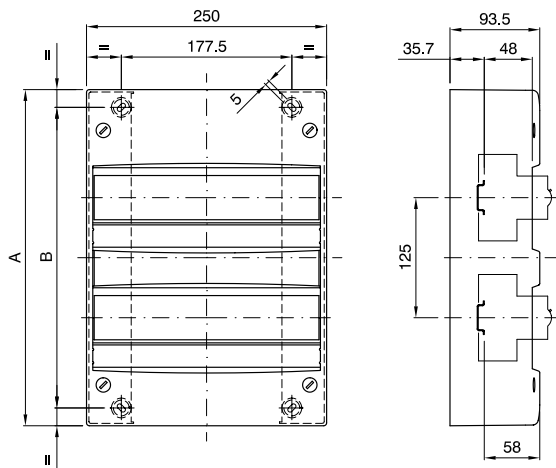
(•) Complete double insulation, in accordance with EN 61140 Standard, obtainable with screwcaps (GW 44 622 or GW 44 623) or resin fixing brackets (GW 44 621).

#### BEHAVIOUR WITH CHEMICAL AND ATMOSPHERIC AGENTS

Saline solution	Acids		Bases		Solvents				Mineral oil	UV rays
	Concentrated	Diluted	Concentrated	Diluted	Hexane	Benzol	Acetone	Ethyl alcohol		
Resistant	Not resistant	Limited resistance	Limited resistance	Not resistant	Limited resistance	Not resistant	Not resistant	Limited resistance	Limited resistance	Resistant

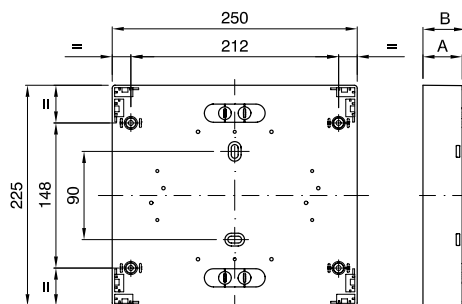
### Dimension tables

#### ENCLOSURES WITHOUT DOOR - IP30



	Code	Dimensions	
		A	B
13M	<b>GW 40 501</b>	225	188
26M	<b>GW 40 502</b>	350	313
39M	<b>GW 40 503</b>	475	438
52M	<b>GW 40 504</b>	600	563

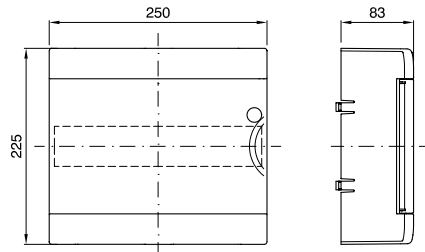
#### SUPPORTING BASES WITHOUT DOOR FOR THE EDF CONNECTION ONE-WAY SWITCH - LEADABLE



Code	Dimensions	
	A	B
<b>GW 40 511</b>	40	43.5
<b>GW 40 512</b>	55	58.5

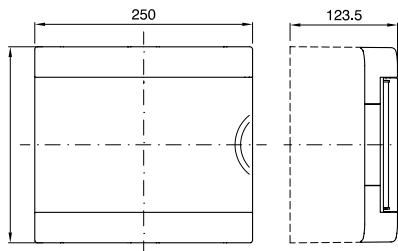
## ENCLOSURES AND DISTRIBUTION BOARDS FOR SPECIFIC STANDARDS

### MODULAR ENCLOSURE FINISHING DOOR - FRENCH STANDARD



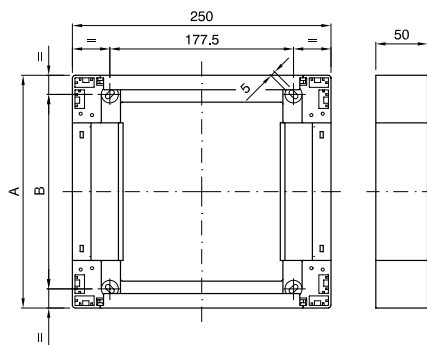
Code
GW 40 511
GW 40 512
GW 40 503
GW 40 504

### MODULAR ENCLOSURE FINISHING DOOR - FRENCH STANDARD



	A
13M	225
26M	350
39M	475
52M	600

### KIT OF MODULAR SPACERS FOR ENCLOSURES, BASES, CONTAINERS AND SUBSCRIBER BOARDS



	Code	Dimensions A	Fixing B
13M	GW 40 516	225	188
26M	GW 40 517	350	313
39M	GW 40 518	475	438
52M	GW 40 519	600	563