

USER'S GUIDE



Manager GEWISS Software tool

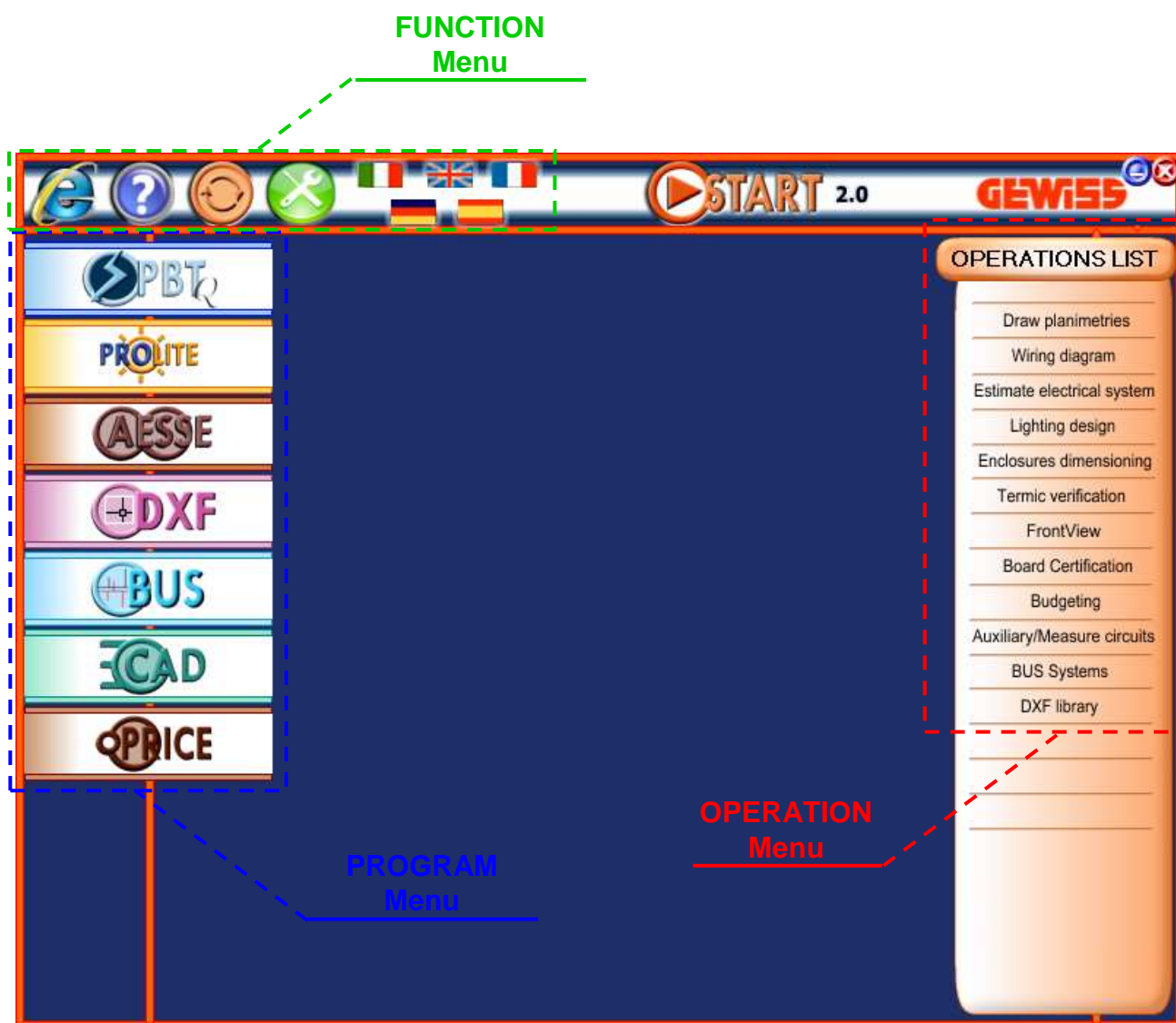
INTRODUCTION

GWSTART is a software that permits the Gewiss Software management and choice during the installation, updating and uninstallation.

GWSTART can detect the installed softwares and permits to update them. The not installed software can be selected by a simple and intuitive "Operations list" that helps the user to choose the most fit software. GWSTART contains descriptions, video lessons and presentation showing the working and the characteristics of each software.

PROGRAM STRUCTURE

The program is made up of various menu:



PROGRAM Menu

By this menu is directly possible to understand if a program is installed on the computer, in fact the button's colour is different:

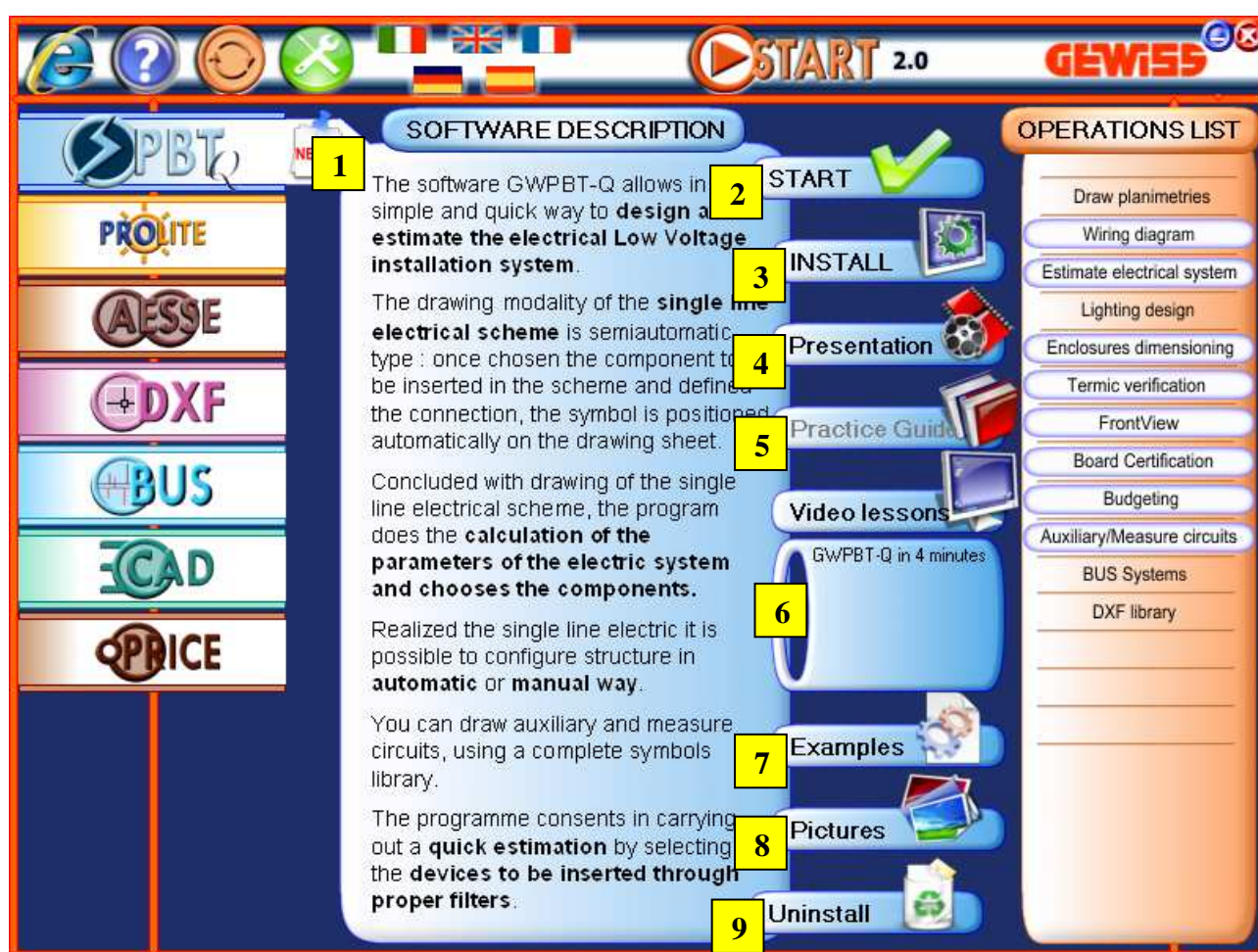
Installed programs



Not installed programs



By clicking on these buttons appears the software page where is possible to start, to install, to uninstall the program and you can consult the program documentation.



1 Little description of main software' functions

2 This button starts the program (if installed) otherwise it will be installed

3 This button installs the program (if isn't installed) otherwise it will be updated

4 This button shows the PowerPoint presentation

5 This button shows the pdf manual

6 This button shows the video lessons

7 This button opens a folder where there are some example files

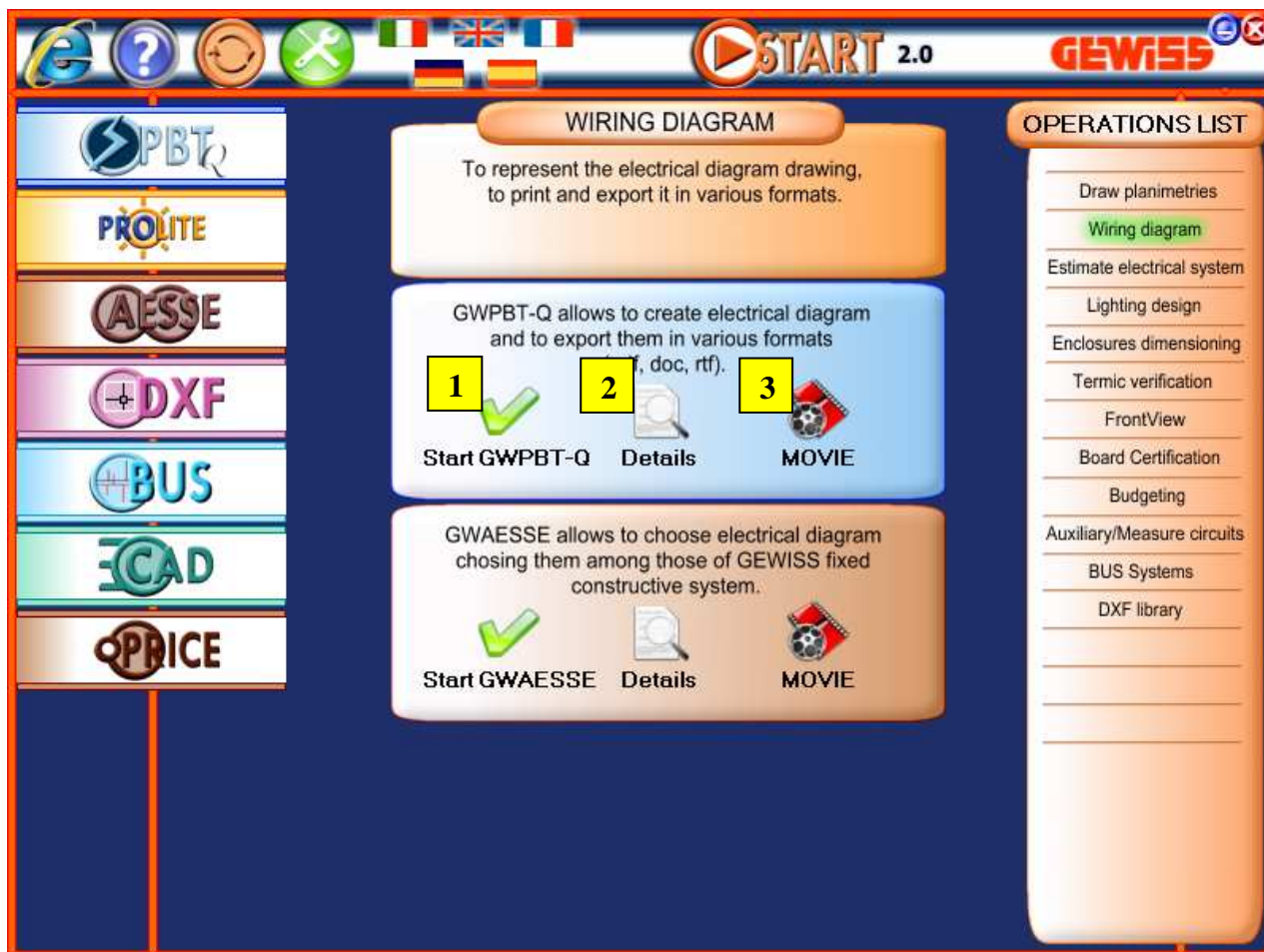
8 This button shows the program screenshots

9 Uninstall the program

OPERATION Menu

This menu is formed by various buttons that represents some operations, for example: to draw the wiring diagram or the planimetries and for each operations are showed the correspondent programs.

For each program showed is possible to execute 3 functions:

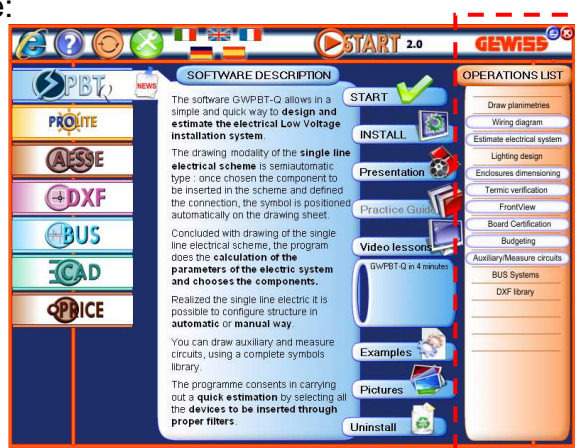


1 Start the program

2 Open the description window of the program

3 This button permits to see the video lessons of the specify operation

The operations that can be executed by a program are showed in the operations menu with a coloured rectangle:



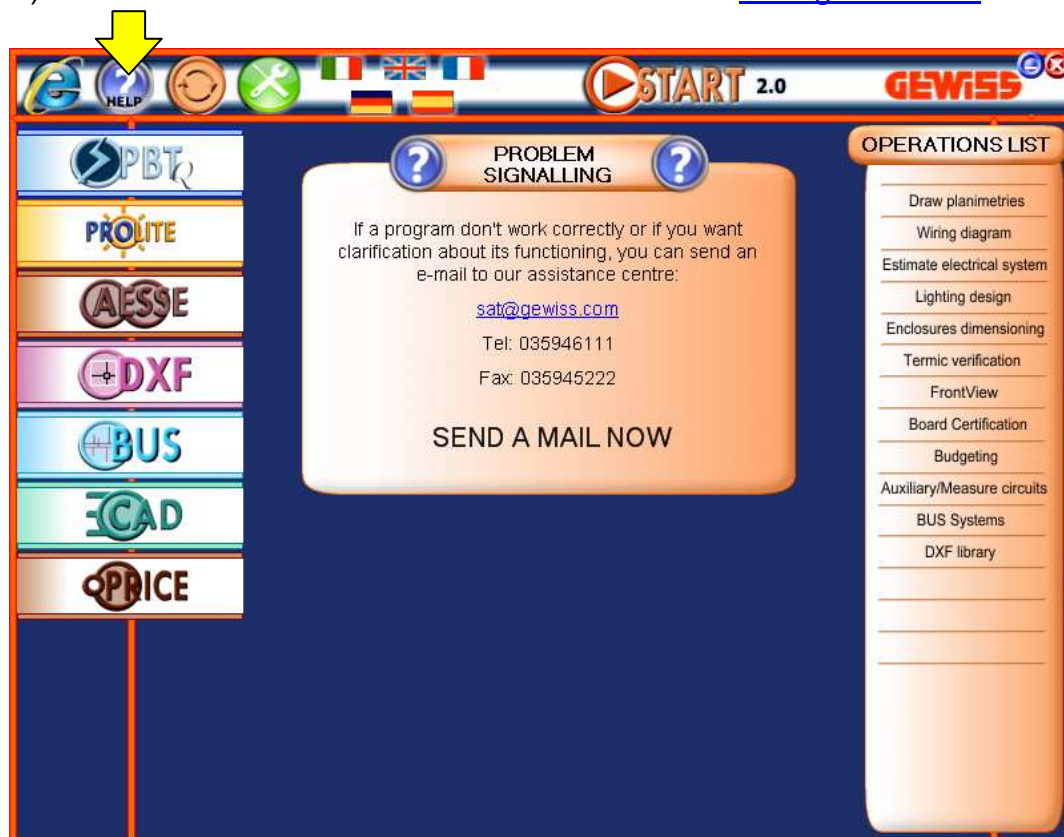
FUNCTION Menu

With this menu is possible to do various operations:

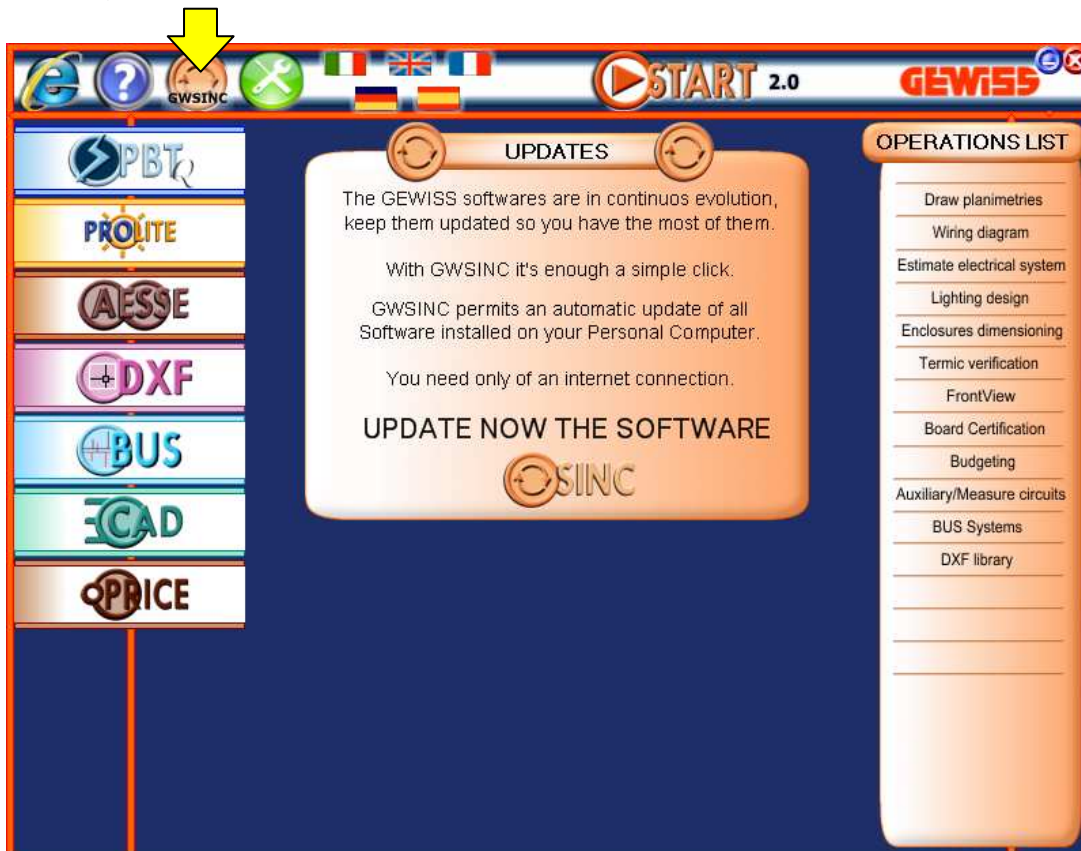
A) To visit the internet site www.gewiss.com so you can see the various GEWISS' news



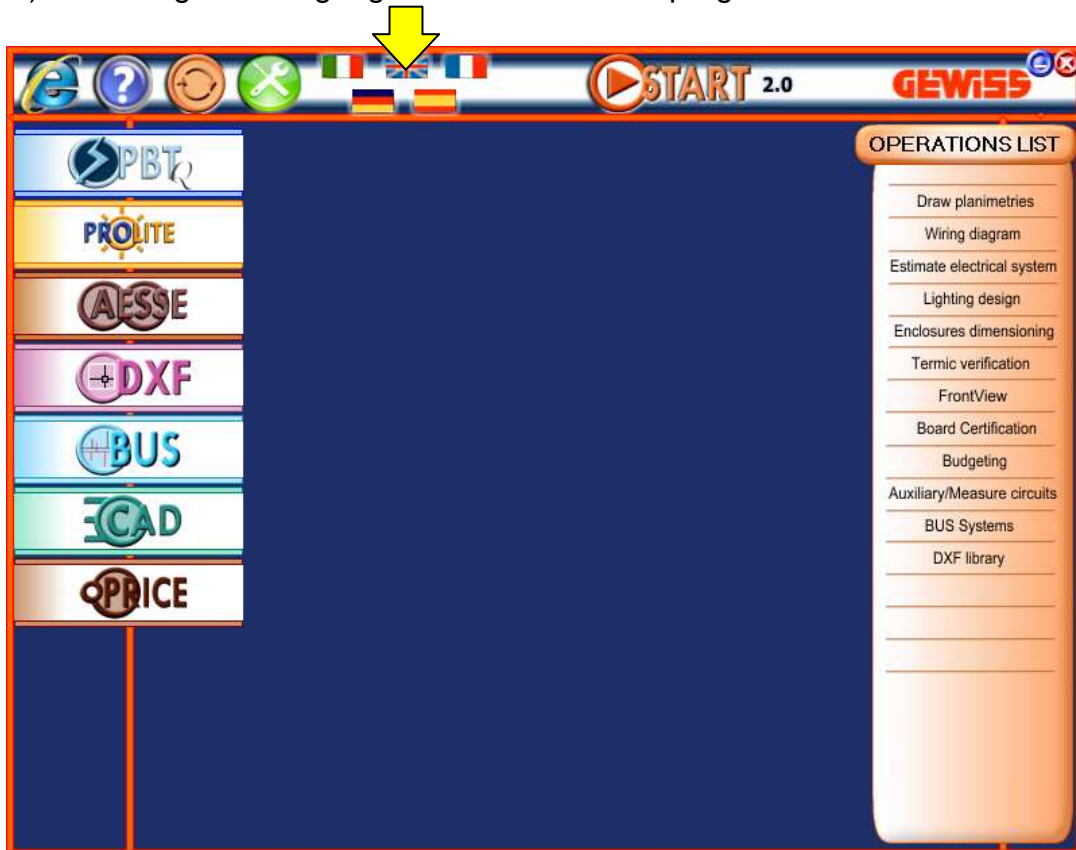
B) To send a mail to the Gewiss assistance centre sat@gewiss.com



- C) To install the GWSINC software so you can update the complete suite of the GEWISS' programs



- D) To change the language of the GWSTART program



E) To see the various typology of file that can be opened or exported by a program

