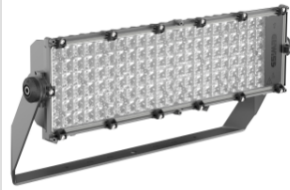


STADIUM PRO



Spatium PRO | 1 is a high-power LED floodlight, with high-emittance LES (light emitted surface), suitable for lighting small or medium-sized sporting facilities. The floodlight has a graphite grey finish with trivalent treatment for maximum resistance to oxidation and is equipped with an integrated 'self-cleaning' heat dissipation system. It consists of 1 module with a bleed and anti-condensation valve, protected from accidental impact. The bracket is made of galvanised steel fixed to the module with screws. The orientation system is enabled by the goniometer integrated into the bracket, which facilitates the pointing phases during installation. The floodlight is available in the following colour temperatures 4,000K or 5,700K and colour rendering CRI>70, CRI>80 or CRI>90 (TLCI>80). In addition, the range offers 6 types of circular optics, from 8° up to 40°, 1 symmetrical/elliptical optic and 2 asymmetric optics. The T.I.R.Ex. optic system developed by GEWISS with lenses in PMMA HT (high-transparency), gives complete control over the light beam, allowing for great flexibility in any project design, with high qualitative and quantitative performance. The floodlight is completed with the power supply unit fixed onto the back of the heat sink. The powers supply unit available in DALI or DMX-RDM versions can be oriented to optimise the heat dispersion depending on the orientation of the motor. It is protected from surges up to 6KV in differential mode and 10KV in common mode.

GENERAL INFORMATION

Context	Professional sport lighting
Luminaire	High power LED floodlight
Toepassing	Binnenshuis / buitenshuis
Unique digital code (Datamatrix)	Currently not present
Kleur	Grafietgrijs
Type lichtbron	LED
System vermogen	480 W
LED Lifetime	L90B10(Tq25°C)=40.000h; L80B10(Tq25°C)=75.000h
Gewicht (kg)	15
Garantie	5 jaar
Opslagtemperatuur	-
Operating temperature	-25 +50 °C

MATERIALS

Body	Gietaluminium
Type plaat	Flat tempered glass 4mm
Optic	T.I.R.Ex. Optical PMMA HT
Gasket	Anti-aging silicone
Locking Hook	-

External screw	Stainless steel
Colour	Polyester powder coated

STANDARDS AND APPROVALS

Classificering	-
Toestel met verlaagde oppervlaktetemperatuur	-
DIN 18032-3-certificering	-
IPEA	-
Isolatie-klasse	I
IP-graad	IP66
Stootbestendigheid	IK08
Glow Wire Test	-

OPTIC AND ILLUMINATING FEATURES

Optiek	Circular 8°
Unified Glare Rating	ULOR = 0%
Lumen-vermogen (lm)	53500
Efficacy (lm/W)	111
Kleurtemperatuur	5700 K
Colour Rendering Index	CRI70
Standard Deviation Colour Matching	SDCM = 5
Photobiological Risk Class	-
Standaard	EN60598-1; EN60598-2-5; IEC 62471; IEC 62778

ELECTRICAL AND LIGHTING FEATURES

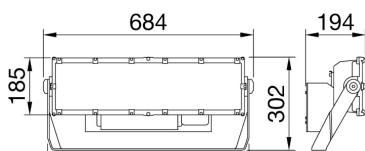
Voedings-spanning	220 - 240 V
Nominale frequentie (Hz)	50 / 60
Driver	Included
Driver failure rate	F10 = 90.000h Tq25°C
Overvoltage protection	DM 6 kV / CM 10 kV
Control System	DALI

INSTALLATION AND MAINTENANCE

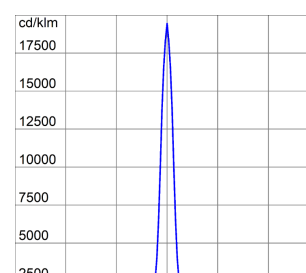
Mounting and installation	High-mast lighting - Wall mounting - Ground mounting
Tilt	Rotation on bracket with integrated goniometer
Wiring	Watertight connector between floodlight and power supply unit
Bevestiging	Beugel
Light source replaceability	By professional
Controlgear replaceability	By professional

Driver Box	Extern
Maximum surface exposed to the wind	0.15 m²

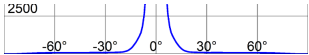
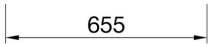
DIMENSIONAL



PHOTOMETRIC DISTRIBUTION



STADIUM PRO



TECHNICAL SYMBOLOGY



IP
IP66

IK
IK08

GWT
-

STANDARDS/APPROVALS

