

# Product Data Sheet

## GW90090

90 MCB Range



Description COMPACT MINIATURE CIRCUIT BREAKER

Code MTC 45

No. of poles 4P

No. modules 2

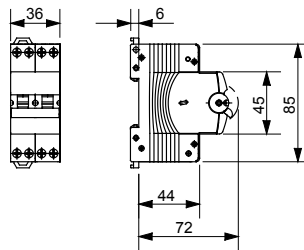
Rated current 32 A

Curve C

Rated voltage 230-400 V

Standard	EN 60898, EN 60947-2	Rated frequency (Hz)	50/60 Hz
Breaking capacity EN 60898 230V (Icn)	4500 A	Breaking capacity EN 60898 400V (Icn)	4500 A
Breaking capacity EN 60898 (Ics)	1 x Icn	Breaking capacity IEC/EN 60947-2 230V (Icu)	6 kA
Breaking capacity IEC/EN 60947-2 400V (Icu)	4.5 kA	Breaking capacity IEC/EN 60947-2 (Ics)	100% Icu
Insulation voltage (Ui)	500 V	Rated impulse withstand voltage (Uimp)	4 kV
Minimum operating voltage	12 V ac/dc	Maximum operating voltage	440 V AC / 220 V DC
Electrical endurance	10.000	Mechanical endurance	20.000
Section rigid cable	<=1x16 - <=1x10+1x6 mm <sup>2</sup>	Section flexible cable	<=1x10 - <=2x6 mm <sup>2</sup>
Rated tightening torque	1.2 Nm	Operating temperature	-25 +70 °C
Stocking temperature	-40°C ÷ +70°C	Electrocod	1411

### DIMENSIONAL



### STANDARDS/APPROVALS



GEWISS S.p.A. Via A. Volta, 1  
24069 Cenate Sotto - Bergamo - Italy  
tel. +39 035 94 61 11 fax +39 035 94 69 09  
Company subject to the management and  
coordination of Polifin S.p.A.

www.gewiss.com  
sat@gewiss.com  
Last update 18/06/2026

Data, measures, designs and pictures are shown  
only as informative purposes,  
and could be changed without previous notice