

Product Data Sheet

GW90046

90 MCB Range



Description COMPACT MINIATURE CIRCUIT BREAKER

Code MTC 45

No. of poles 2P

No. modules 1

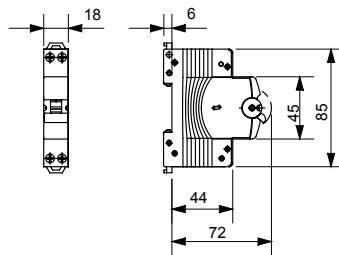
Rated current 10 A

Curve C

Rated voltage 230 V

| | | | |
|---|---|--|---|
| Standard | EN 60898, EN 60947-2 | Rated frequency (Hz) | 50/60 Hz |
| Breaking capacity EN 60898 230V (Icn) | 4500 A | Breaking capacity EN 60898 (Ics) | 1 x Icn |
| Breaking capacity IEC/EN 60947-2 230V (Icu) | 6 kA | Breaking capacity IEC/EN 60947-2 (Ics) | 100% Icu |
| Insulation voltage (Ui) | 500 V | Rated impulse withstand voltage (Uimp) | 4 kV |
| Minimum operating voltage | 12 V ac/dc | Maximum operating voltage | 440 V AC / 220 V DC |
| Electrical endurance | 10.000 | Mechanical endurance | 20.000 |
| Section rigid cable | $\leq 1 \times 16 - \leq 1 \times 10 + 1 \times 6 \text{ mm}^2$ | Section flexible cable | $\leq 1 \times 10 - \leq 2 \times 6 \text{ mm}^2$ |
| Rated tightening torque | 1.2 Nm | Operating temperature | -25 +70 °C |
| Stocking temperature | -40°C + +70°C | Electrocod | 1411 |

DIMENSIONAL



STANDARDS/APPROVALS



GEWISS S.p.A. Via A. Volta, 1
24069 Cenate Sotto - Bergamo - Italy
tel. +39 035 94 61 11 fax +39 035 94 69 09
Company subject to the management and
coordination of Polifin S.p.A.

www.gewiss.com
sat@gewiss.com
Last update 18/06/2026

Data, measures, designs and pictures are shown
only as informative purposes,
and could be changed without previous notice