

Product Data Sheet

GW90029

90 MCB Range



Description COMPACT MINIATURE CIRCUIT BREAKER

Code MTC 45

No. of poles 1P+N

No. modules 1

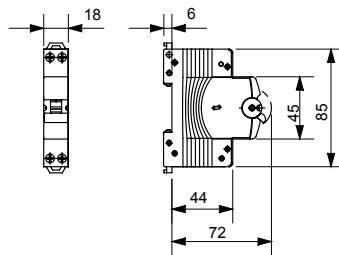
Rated current 25 A

Curve C

Rated voltage 230 V

Standard	EN 60898	Rated frequency (Hz)	50/60 Hz
Breaking capacity EN 60898 230V (Icn)	4500 A	Breaking capacity EN 60898 (Ics)	1 x Icn
Breaking capacity IEC/EN 60947-2 230V (Icu)	4.5 kA	Breaking capacity IEC/EN 60947-2 (Ics)	100% Icu
Insulation voltage (Ui)	500 V	Rated impulse withstand voltage (Uimp)	4 kV
Minimum operating voltage	12 V ac	Maximum operating voltage	253 V ac
Electrical endurance	10.000	Mechanical endurance	20.000
Section rigid cable	$\leq 1 \times 16$ - $\leq 1 \times 10 + 1 \times 6$ mm ²	Section flexible cable	$\leq 1 \times 10$ - $\leq 2 \times 6$ mm ²
Rated tightening torque	1.2 Nm	Operating temperature	-25 +70 °C
Stocking temperature	-40°C ÷ +70°C	Can be accessorized	No
Electrocod	1411		

DIMENSIONAL



STANDARDS/APPROVALS



GEWISS S.p.A. Via A. Volta, 1
24069 Cenate Sotto - Bergamo - Italy
tel. +39 035 94 61 11 fax +39 035 94 69 09
Company subject to the management and
coordination of Polifin S.p.A.

www.gewiss.com
sat@gewiss.com
Last update 19/06/2026

Data, measures, designs and pictures are shown
only as informative purposes,
and could be changed without previous notice