



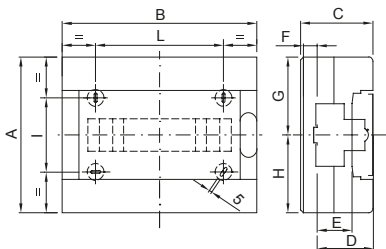
The IP40 protected decorative enclosures are available in sizes from 8 to 72M. They provide superior aesthetic integration. They are available with smoked transparent doors or with blank doors that can be equipped with safety lock, characterized by the "PUSH" opening and closing. They can be equipped with bipolar and unipolar terminal blocks, 80 A and 125 A, with screw wiring; they allow to create simple and neat wiring reducing the set-up time of the enclosure.

Insulation class	II (according to IEC 61140 standards)	Colour	White RAL 9016
Outer dim. LxHxD (mm)	280x225x100	IP degree	IP40
Dispersible power (W)	22	Mechanical resistance	IK08
Rated voltage	400 V	Door colour	Smoked Transparent
No. of modules EN 50022	12	Rated current	125 A
Glow Wire Test	650 °C	Operating temperature	-25 +60 °C
Type of material	Halogen-free in compliance with EN 60754-2	Thermo-pressure with ball	70 °C
Accessories for insulation restoring	Screwcaps (GW44623) or fixing brackets in resin (GW44621)	Standard	EN 60670-1 (CEI 23-48) IEC60670-24 CEI 23-49
Insulation voltage	750 V	Max. installable terminal blocks	1 x 12 modules

BEHAVIOUR WITH CHEMICAL AND ATMOSPHERIC AGENTS

Saline solution	Acids		Bases		Solvents				Mineral oil	UV rays
	Concentrated	Diluted	Concentrated	Diluted	Hexane	Benzol	Acetone	Alcohol		
Resistant	Not resistant	Limited resistance	Not resistant	Limited resistance	Limited resistance	Not resistant	Not resistant	Limited resistance	Limited resistance	Limited resistance

DIMENSIONAL



	Codice	Ingombro			Montaggio modulari				Fissaggio			
		A	B	C	D	E	F	G	H	NR	I	L
8M	GW 40 043	180	200	100	77	47	11,5	90	90	3	82	100
	GW 40 063											
12M	GW 40 045	225	280	100	77	47	11,5	112,5	112,5	4	107	180
	GW 40 065											

TECHNICAL SYMBOLOGY

GWT

650 °C



-25 +60 °C



70 °C

II (according to IEC 61140 standards)

IP40

IK08

Halogen-free in compliance with EN 60754-2

STANDARDS/APPROVALS



GEWISS S.p.A. Via A. Volta, 1
24069 Cenate Sotto - Bergamo - Italy
tel. +39 035 94 61 11 fax +39 035 94 69 09
Company subject to the management and coordination of Polifin S.p.A.

www.gewiss.com
sat@gewiss.com
Last update 25/06/2026

Data, measures, designs and pictures are shown only as informative purposes, and could be changed without previous notice