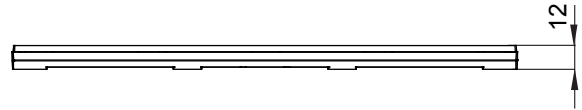
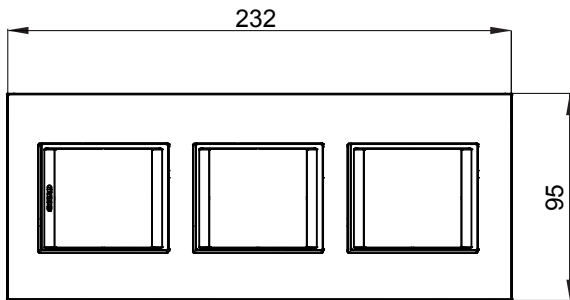




Range of ChoruSmart domestic series plates, made in a wide variety of shapes, colours, materials and finishes. It includes five different shapes (ONE, GEO, EGO, LUX, ICE and ICE Touch) for rectangular boxes with a capacity of up to 12 modules and three different shapes (ONE International, GEO International and LUX International) suitable for round/square boxes, both single and combined in horizontal or vertical configurations, with a capacity of 2 up to 2+2+2+2 modules. All ChoruSmart domestic series plates use the same supports, without the need for additional adapters. The range also includes blank plates, watertight IP55 plates and contour plates.

|                           |                           |                |               |
|---------------------------|---------------------------|----------------|---------------|
| Family                    | LUX International         | Description    | 2+2+2 modules |
| Type                      | Vertical                  | Colour         | Toner black   |
| Material                  | Technopolymer             | Finishing      | Glossy        |
| For support codes         | GW16821, GW16822, GW16823 | Glow wire test | 650 °C        |
| Thermo-pressure with ball | 70 °C                     | Standard       | EN 60669-1    |
| Electrocod                | 0110                      |                |               |

### DIMENSIONAL



### TECHNICAL SYMBOLOGY



### STANDARDS/APPROVALS

